

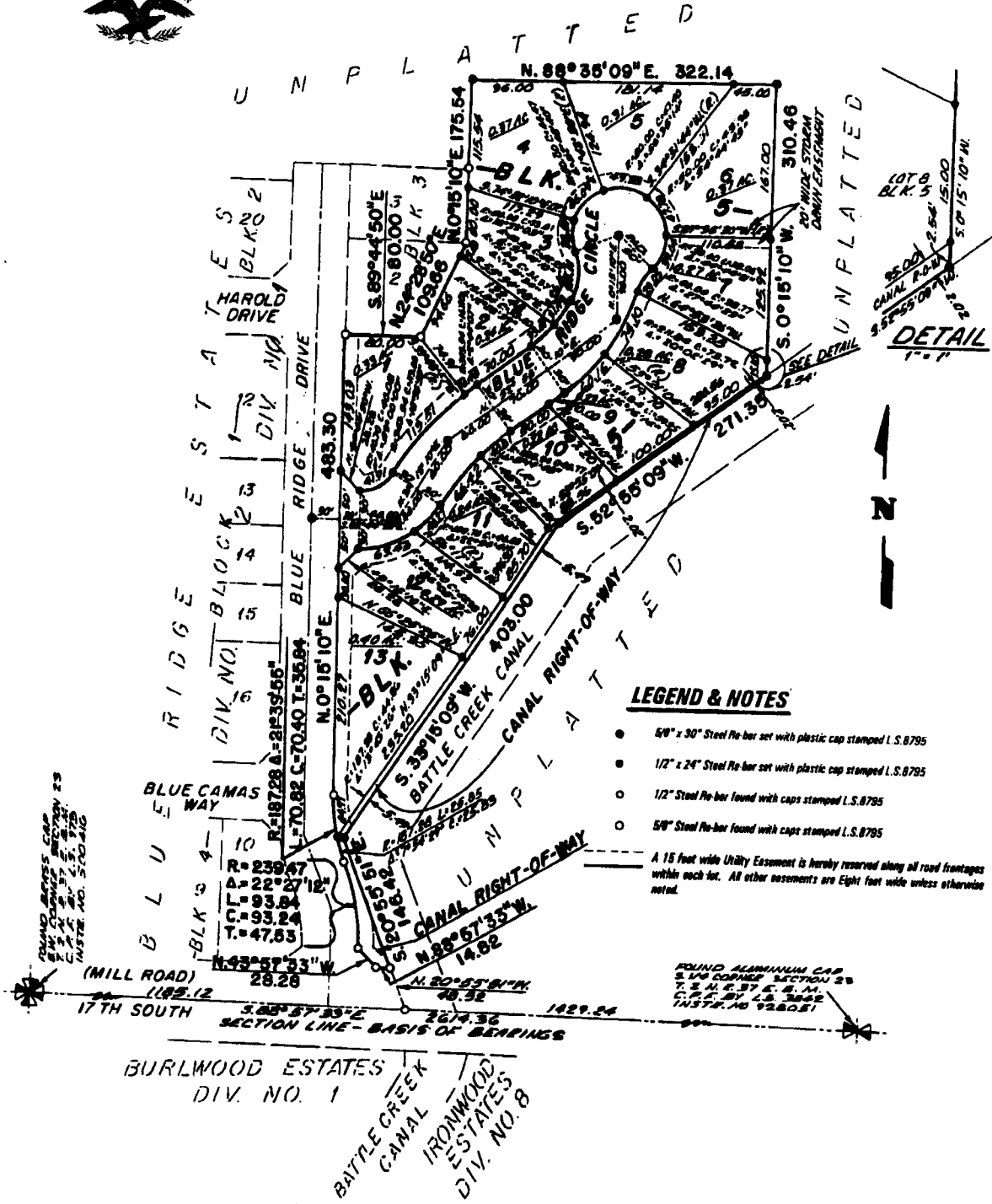
# BLUE RIDGE ESTATES DIVISION NO. 4

## AN ADDITION TO THE CITY OF IDAHO FALLS, BONNEVILLE COUNTY, IDAHO

BEING PART OF THE S. 1/2 OF THE S.W. 1/4 OF SECTION 23, T.2 N. R. 37 E., B.M.

First American Title Company  
Idaho Falls, Idaho 83404

This sketch is made solely for the purpose of assisting in locating the premises. The company assumes no liability for alleged loss or damage which may result from reliance on this map.

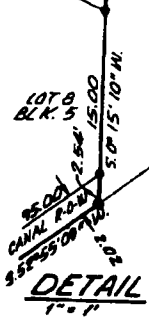


### LEGEND & NOTES

- 5/8" x 30" Steel Re-bar set with plastic cap stamped I.S. 8795
  - 1/2" x 24" Steel Re-bar set with plastic cap stamped I.S. 8795
  - 1/2" Steel Re-bar found with caps stamped I.S. 8795
  - 5/8" Steel Re-bar found with caps stamped I.S. 8795
- A 15 foot wide Utility Easement is hereby reserved along all road frontages within each lot. All other easements are Eight foot wide unless otherwise noted.

FOUND ALUMINUM CAP  
S.W. 1/4 CORNER SECTION 23  
T. 2 N. R. 37 E. B.M.  
C.P.C. BY L.S. 2842  
INSTR. NO. 928051

FOUND ALUMINUM CAP  
S.W. 1/4 CORNER SECTION 23  
T. 2 N. R. 37 E. B.M.  
C.P.C. BY L.S. 2842  
INSTR. NO. 928051



BURLWOOD ESTATES  
DIV. NO. 1

BATTLE CREEK  
CANAL

IRONWOOD  
ESTATES  
DIV. NO. 8