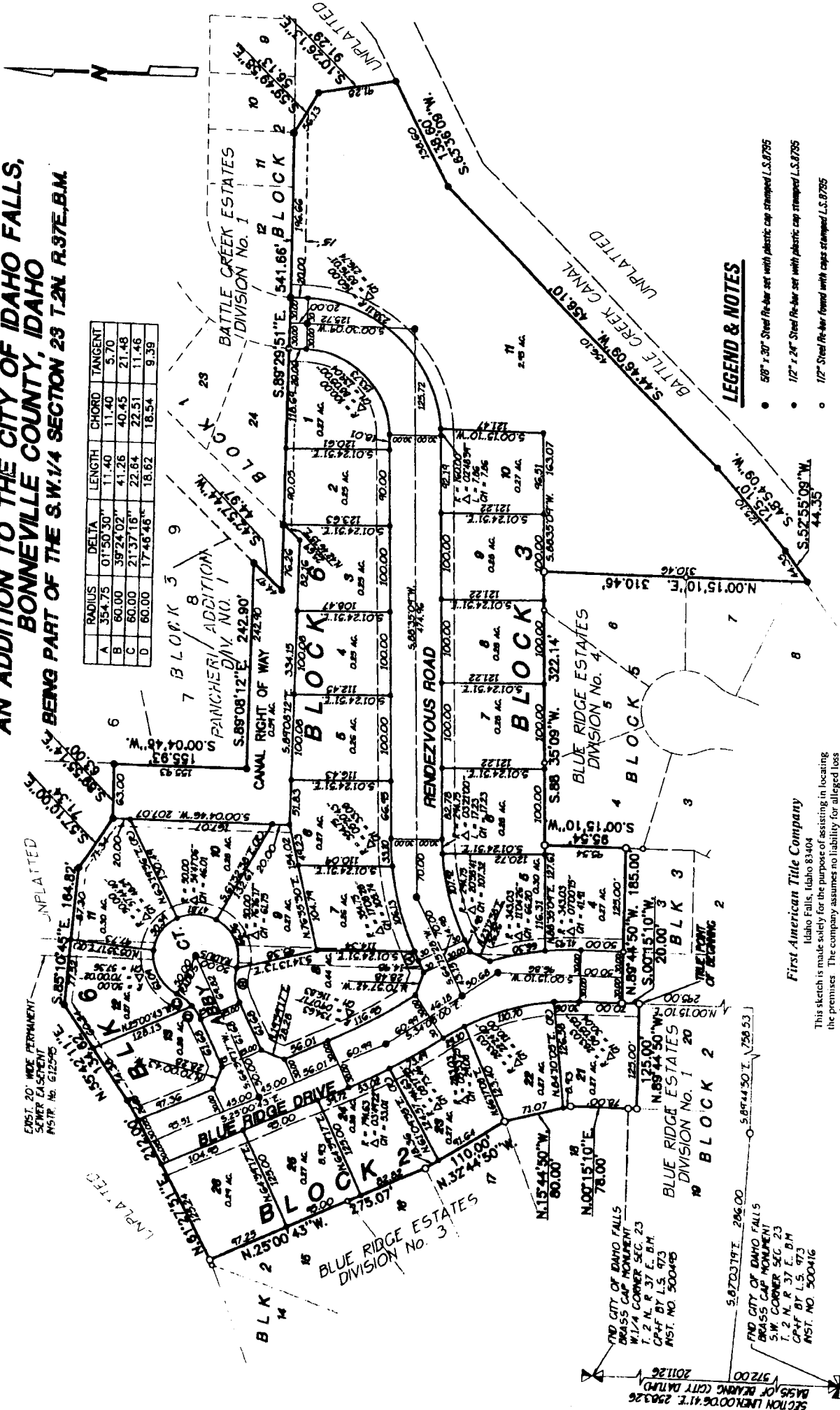


# BLUE RIDGE ESTATES

**DIVISION NO. 5**  
**AN ADDITION TO THE CITY OF IDAHO FALLS,**  
**BONNEVILLE COUNTY, IDAHO**  
**BEING PART OF THE S.W.1/4 SECTION 23 T.2N. R.37E. B.M.**

	RADIUS	DELTA	LENGTH	CHORD	TANGENT
A	354.75	01°50'30"	11.40	5.70	
B	60.00	39°24'02"	41.26	21.48	
C	60.00	21°37'16"	22.64	11.48	
D	60.00	17°48'48"	18.62	9.39	



### LEGEND & NOTES

- 50" x 20" Steel Re-bar set with plastic cap stamped L.S. 8795
- 12" x 24" Steel Re-bar set with plastic cap stamped L.S. 8795
- 12" Steel Re-bar found with caps stamped L.S. 8795
- 50" Steel Re-bar found with caps stamped L.S. 8795
- 12" Steel Re-bar found with caps stamped L.S. 780

— A 15 foot wide Utility Easement is hereby reserved along all road frontages within each lot. All other easements are eight feet wide unless otherwise noted.

### First American Title Company

Idaho Falls, Idaho 83404  
 This sketch is made solely for the purpose of assisting in locating the premises. The company assumes no liability for alleged loss or damage which may result from reliance on this map.



ENST. 20" WIDE PERMANENT  
 SEWER EASEMENT  
 INSTR. NO. 612595

FIND CITY OF IDAHO FALLS  
 BRASS CAP MONUMENT  
 W.1/4 CORNER SEC. 23  
 T. 2 N. R. 37 E. B.M.  
 CAP BY L.S. 473  
 INSTR. NO. 300495

FIND CITY OF IDAHO FALLS  
 BRASS CAP MONUMENT  
 S.W. CORNER SEC. 23  
 T. 2 N. R. 37 E. B.M.  
 CAP BY L.S. 473  
 INSTR. NO. 300416

SECTION LINE 00.06417 E. 250326  
 BASE OF BEARING CITY DATUM  
 2011.26