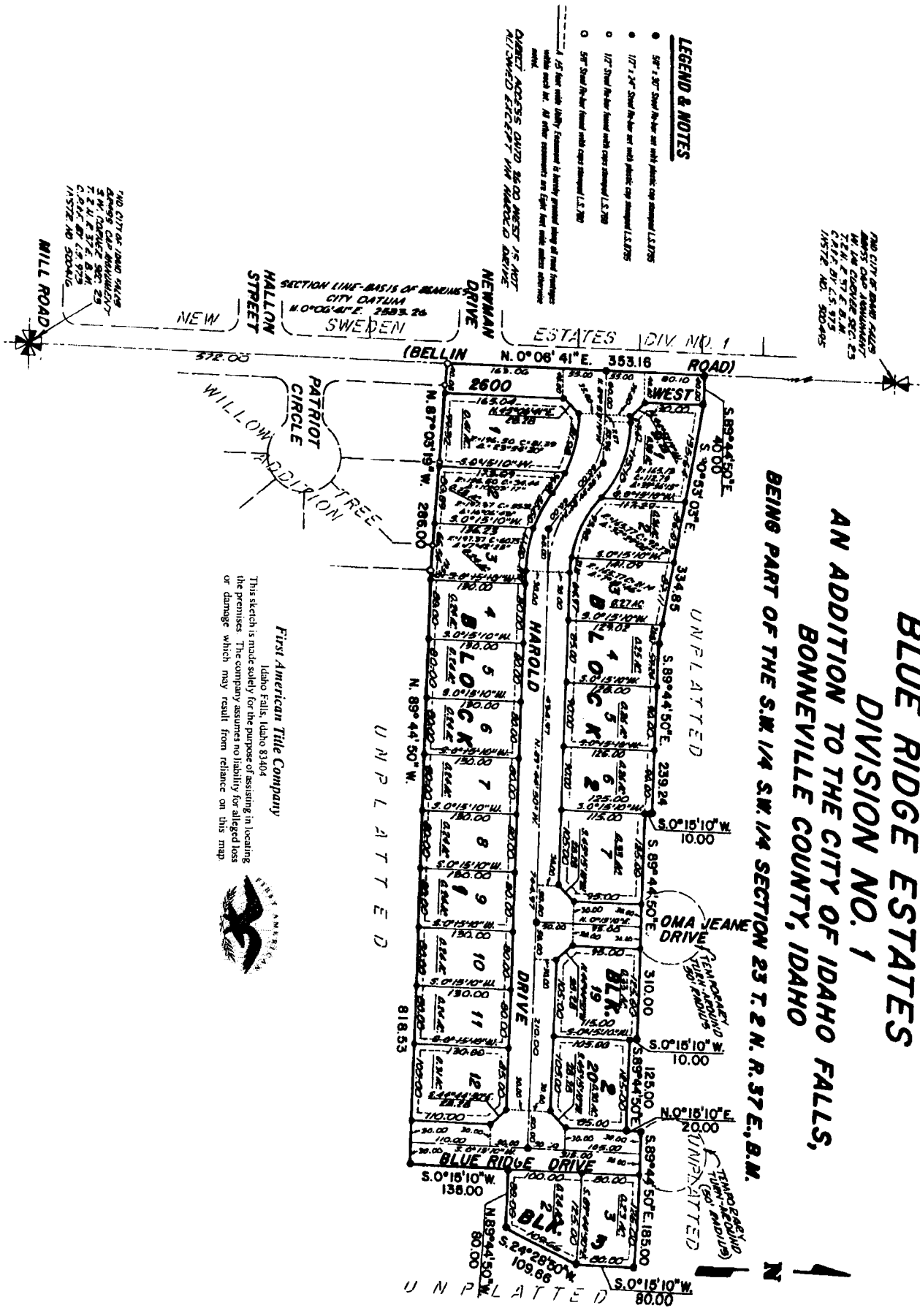


THE CITY OF BONNEVILLE
 BONNEVILLE, IDAHO
 W. L. GARDNER, REC. CLERK
 T. E. W. & S. E. B. M.
 1957, DIV. 1, S. 17, 18
 1957, DIV. 1, S. 17, 18

BLUE RIDGE ESTATES DIVISION NO. 1 AN ADDITION TO THE CITY OF IDAHO FALLS, BONNEVILLE COUNTY, IDAHO BEING PART OF THE S.W. 1/4 S.W. 1/4 SECTION 23 T. 2 N. R. 37 E., B.M.

LEGEND & NOTES

- 50' x 30' Steel Pile - not with public copy stamped L.S. 2785
 - 127' x 24' Steel Pile - not with public copy stamped L.S. 2785
 - 127' Steel Pile - found with copy stamped L.S. 2785
 - 50' Steel Pile - found with copy stamped L.S. 2785
1. 25' Bear with utility easement to be fully granted along all road frontages which shall be. All other easements are left for the owner's reference.
- QUAMBY ACCESS QUAD 26.00 WEST 1/2 AC. NOT A/SUBDIVIDED EXCEPT IN MARKETED DIVISION



This sketch is made solely for the purpose of assisting in locating the premises. The company assumes no liability for alleged loss or damage which may result from reliance on this map.



THE CITY OF BONNEVILLE
 BONNEVILLE, IDAHO
 W. L. GARDNER, REC. CLERK
 T. E. W. & S. E. B. M.
 1957, DIV. 1, S. 17, 18
 1957, DIV. 1, S. 17, 18