

BLUE RIDGE ESTATES DIVISION NO. 3

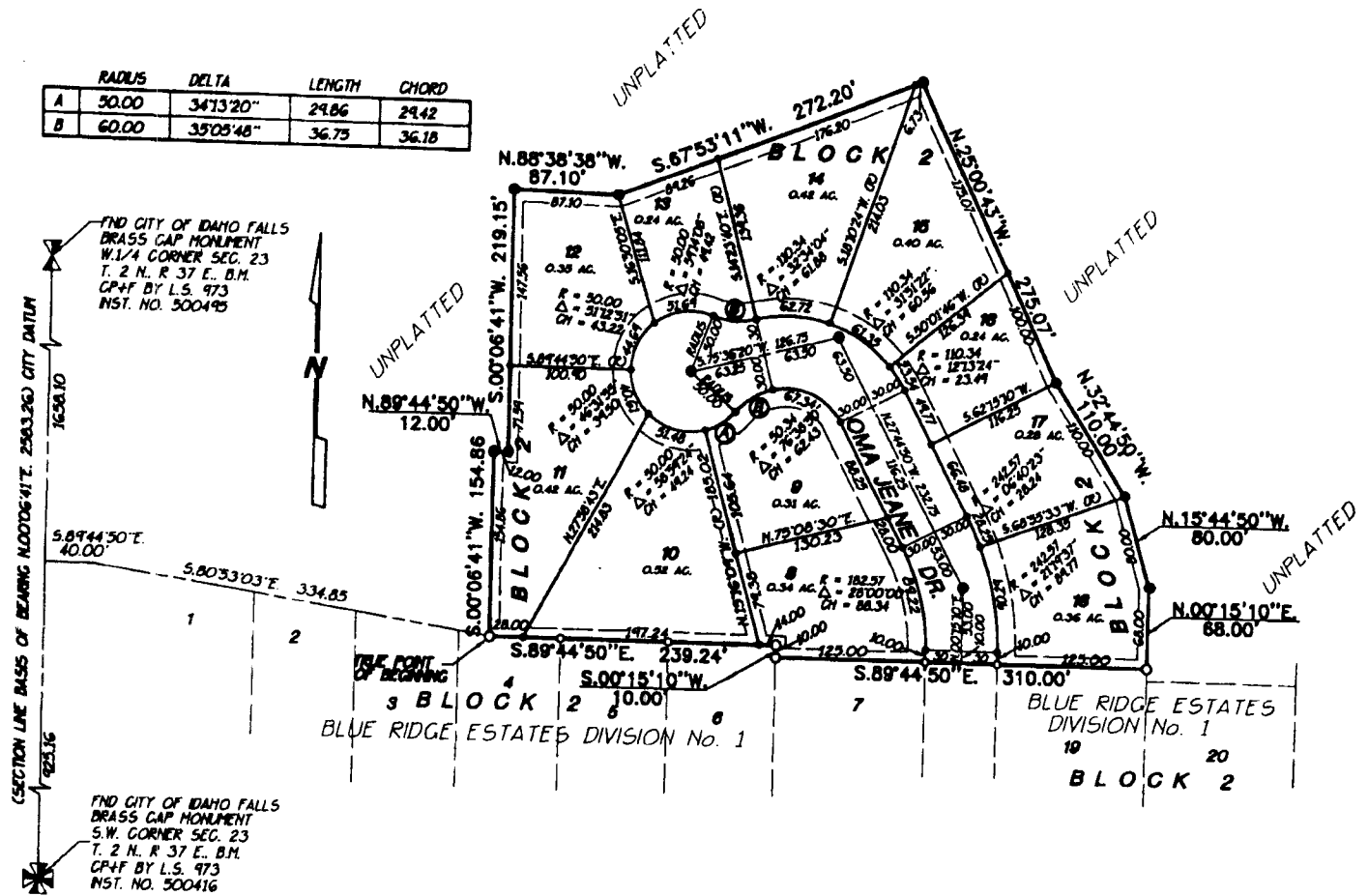
AN ADDITION TO THE CITY OF IDAHO FALLS, BONNEVILLE COUNTY, IDAHO

BEING PART OF THE W. 1/2 S.W.1/4 SECTION 23 T.2N. R.37E,B.M.

First American Title Company
Idaho Falls, Idaho 83404
This sketch is made solely for the purpose of assisting in locating the premises. The company assumes no liability for alleged loss or damage which may result from reliance on this map.



| | RADIUS | DELTA | LENGTH | CHORD |
|---|--------|-----------|--------|-------|
| A | 50.00 | 34°13'20" | 29.86 | 29.42 |
| B | 60.00 | 35°03'48" | 36.75 | 36.18 |



LEGEND & NOTES

- 5/8" x 30" Steel Re-bar set with plastic cap stamped L.S.8795
- 1/2" x 24" Steel Re-bar set with plastic cap stamped L.S.8795
- 1/2" Steel Re-bar found with caps stamped L.S.8795
- 5/8" Steel Re-bar found with caps stamped L.S.8795

--- A 15 foot wide Utility Easement is hereby granted along all road frontages within each lot. All other easements are Eight feet wide unless otherwise noted.