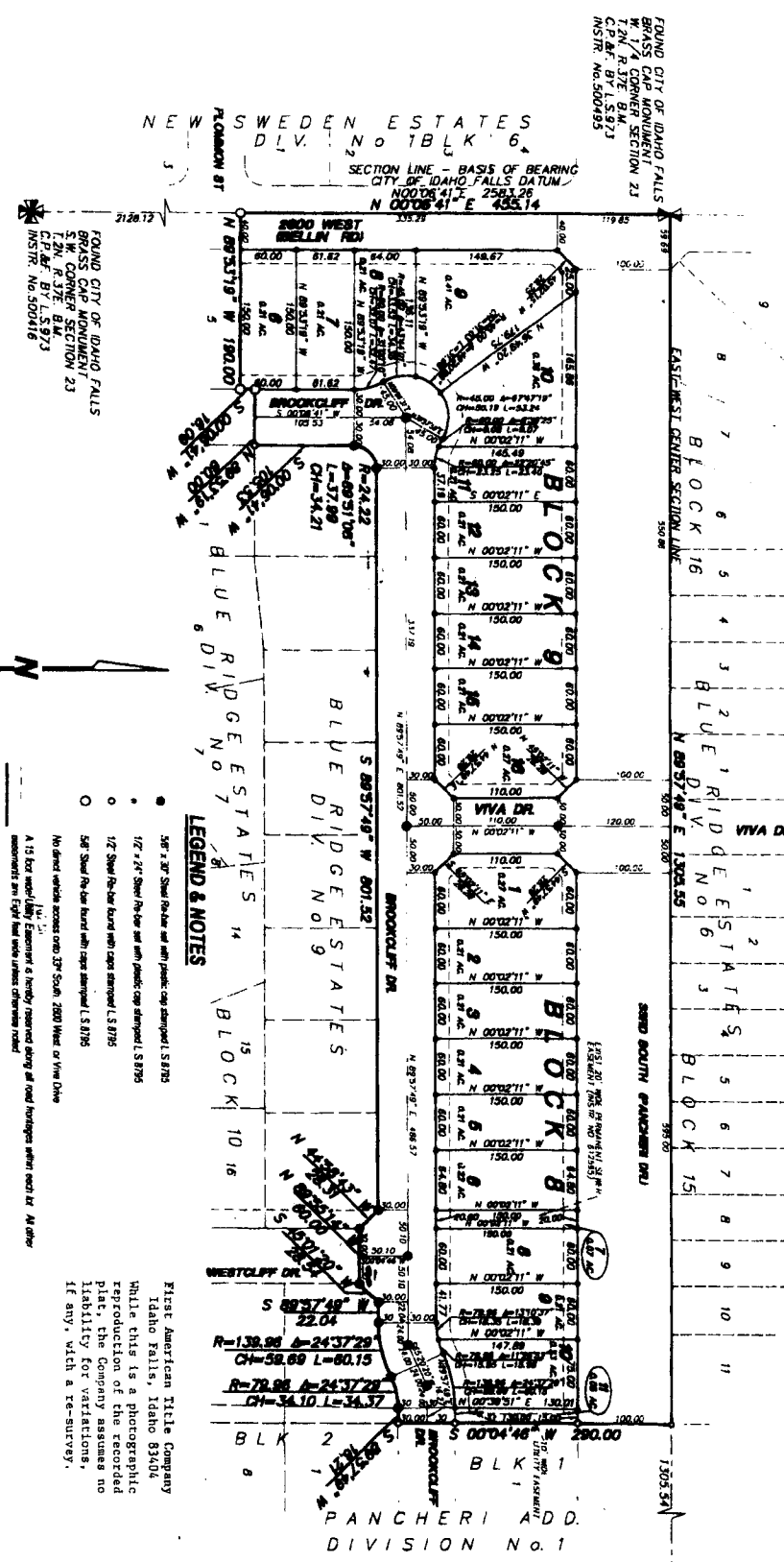


BLUE RIDGE ESTATES

DIVISION NO. 8

AN ADDITION TO THE CITY OF IDAHO FALLS

BONNEVILLE COUNTY, IDAHO
 BEING A PART OF THE W 1/2 S.W 1/4 SECTION 23 T2N R37E B.M.



LEGEND & NOTES

- 3/8" x 3/8" Steel Rebar set with plastic cap stamped L.S. 8795
 - 1/2" x 1/2" Steel Rebar set with plastic cap stamped L.S. 8795
 - 1/2" Steel Rebar buried with caps stamped L.S. 8795
 - 3/8" Steel Rebar buried with caps stamped L.S. 8795
- No direct vehicle access onto 27th South, 2800 West or Viva Drive
- A 15 foot utility Easement is hereby reserved along all road frontages within each lot. All other easements are Eject and void unless otherwise noted.

First American Title Company
 Idaho Falls, Idaho 83404

While this is a photographic reproduction of the recorded plat, the Company assumes no liability for variations, if any, with a re-survey.

FOUND CITY OF IDAHO FALLS
 BRASS CAP MONUMENT
 W 1/4 CORNER SECTION 23
 C.P.M. BY L.S. 873
 INSTR. NO. 500995

FOUND CITY OF IDAHO FALLS
 BRASS CAP MONUMENT
 W 1/4 CORNER SECTION 23
 C.P.M. BY L.S. 873
 INSTR. NO. 500484

NEW SWEDEN ESTATES
 DIV. NO. 1 BLK. 6

SECTION LINE - BASIS OF BEARING
 CITY OF IDAHO FALLS DATUM
 N 00°08'41" E 2583.26
 N 00°08'41" E 435.14

FOUND CITY OF IDAHO FALLS
 BRASS CAP MONUMENT
 T 2N. C 1/4 CORNER SECTION 23
 C.P.M. BY L.S. 873
 INSTR. NO. 500416

