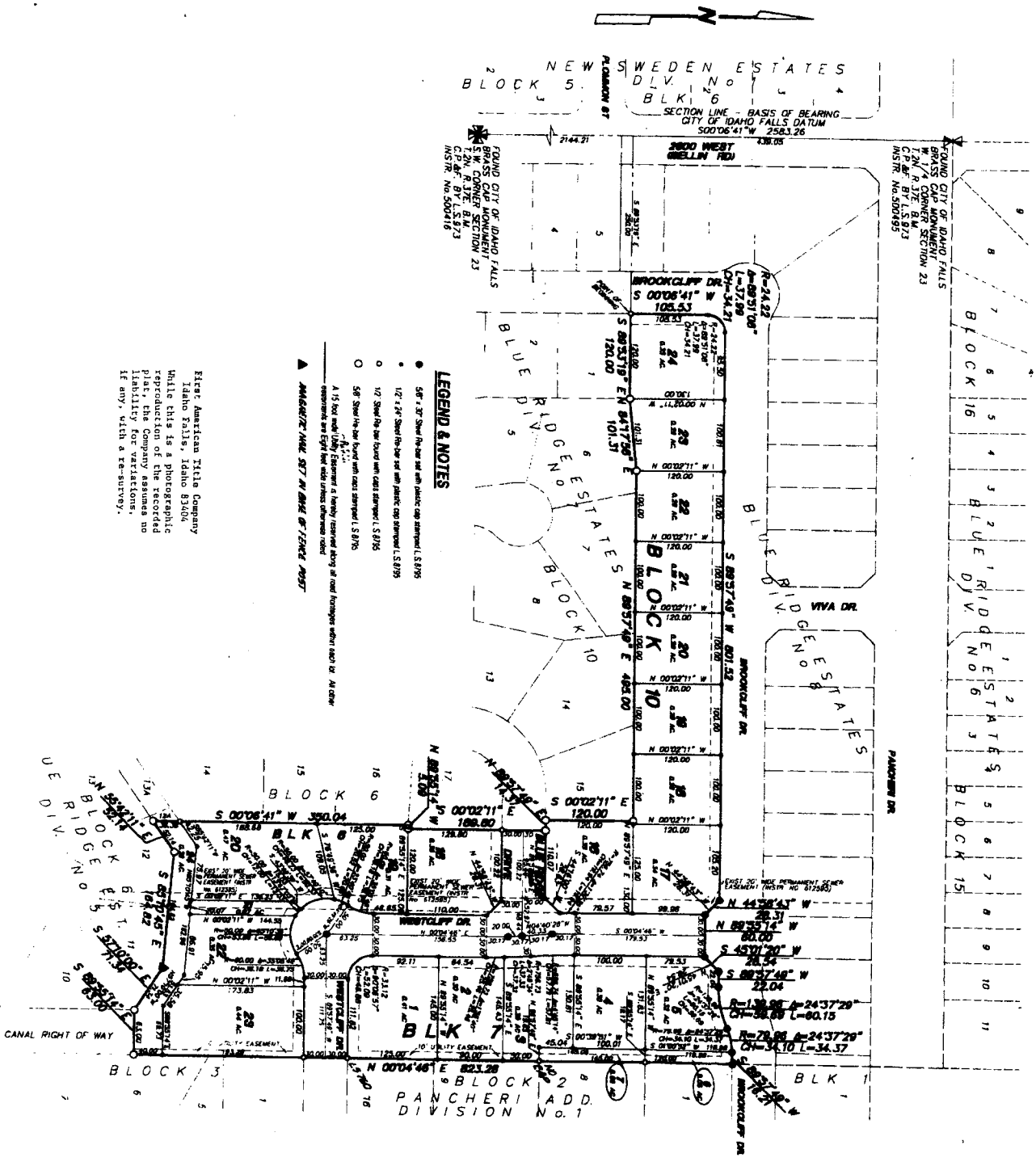


# BLUE RIDGE ESTATES

DIVISION NO. 9  
 AN ADDITION TO THE CITY OF DAHO FALLS  
 BONNEVILLE COUNTY, IDAHO  
 BEING A PART OF THE W. 1/2 S.W. 1/4 SECTION 23 12N. R. 37E. B.M.



### LEGEND & NOTES

- 5/8" x 3/8" Steel Pin set with plastic cap stamped L.S. 8795
  - 1/2" x 3/8" Steel Pin set with plastic cap stamped L.S. 8795
  - 1/2" Steel Pin set found with cap stamped L.S. 8795
  - 5/8" Steel Pin set found with cap stamped L.S. 8795
- A 1/4" hole with Utility Equipment is hereby reserved along all road frontages when used by: As shown on record and right of way unless otherwise noted.
- ▲ **ADJACENT MAP: S27 ANCHER ST. 12N. R. 37E. B.M.**

First American Title Company  
 Idaho Falls, Idaho 83404  
 While this is a photographic reproduction of the recorded plat, the Company assumes no liability for variations, if any, with a re-survey.