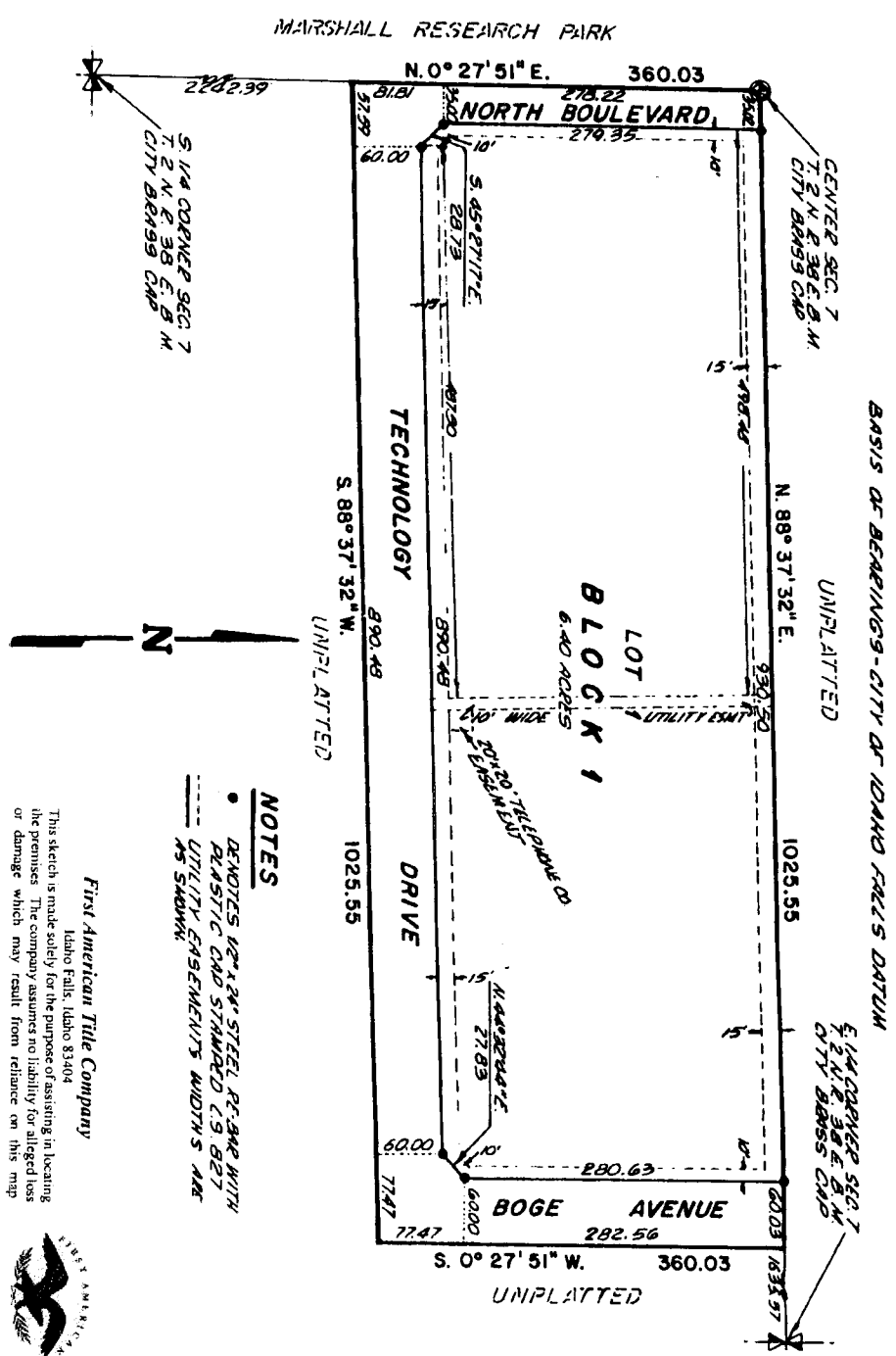


# BONNEVILLE COUNTY TECHNOLOGY PARK

## DIVISION NO. 1

AN ADDITION TO THE CITY OF IDAHO FALLS,  
 BONNEVILLE COUNTY, IDAHO  
 BEING PART OF THE NW 1/4 SE 1/4 SECTION 7, T. 2 N., R. 38 E. B. M.



**NOTES**

- DENOTES 12"x24" STEEL REBAR WITH PLASTIC CAP STANDARD (.9 GBT UTILITY EASEMENTS WIDTHS ARE AS SHOWN)

First American Tile Company  
 Idaho Falls, Idaho 83404  
 This sketch is made solely for the purpose of assisting in locating the premises. The company assumes no liability for alleged loss or damage which may result from reliance on this map.

