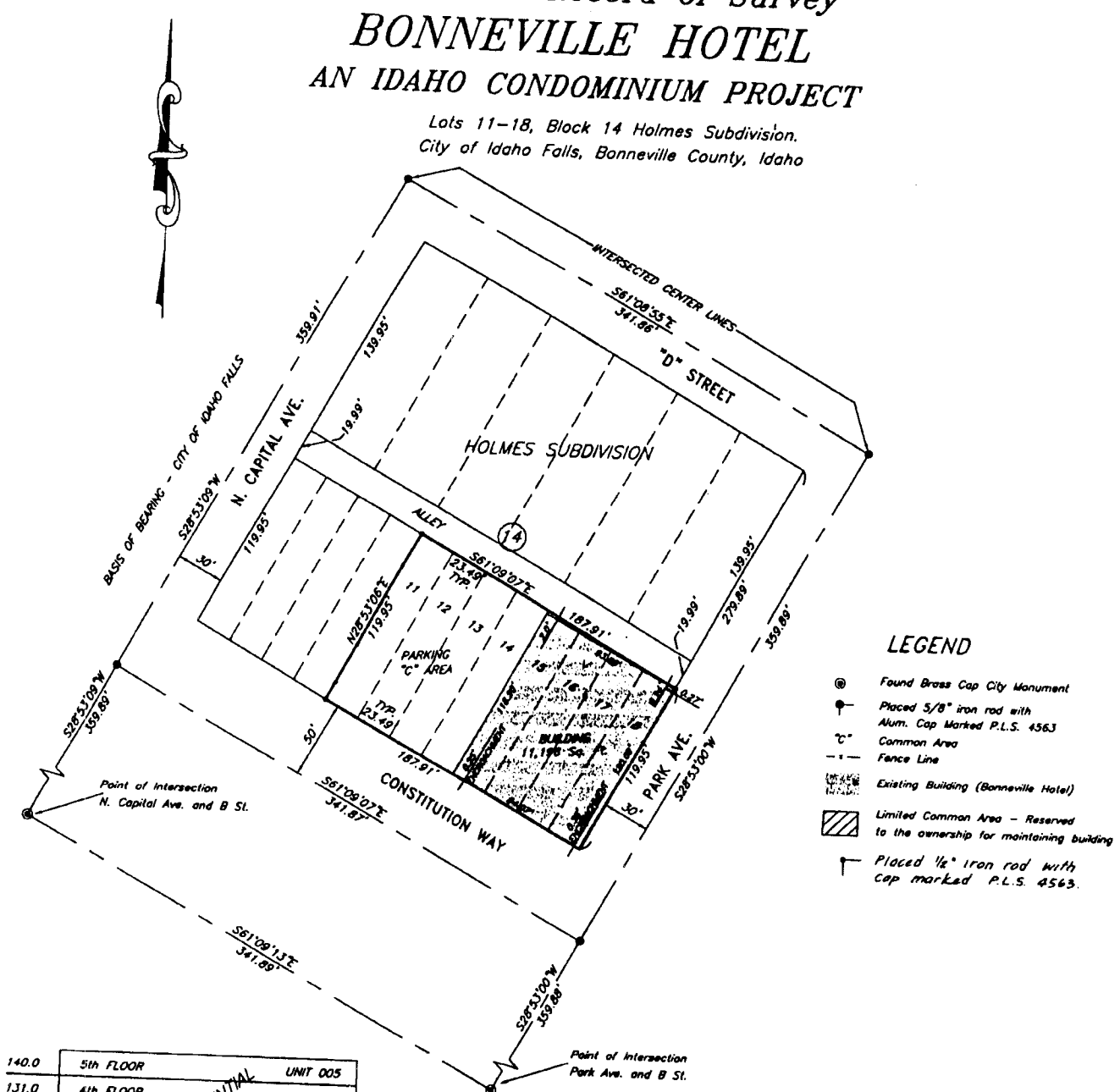


EXHIBIT "A" Record of Survey BONNEVILLE HOTEL AN IDAHO CONDOMINIUM PROJECT

Lots 11-18, Block 14 Holmes Subdivision,
City of Idaho Falls, Bonneville County, Idaho



LEGEND

- ⊙ Found Brass Cap City Monument
- ⊙ Placed 5/8" iron rod with Alum. Cap Marked P.L.S. 4563
- ⊙ Common Area
- - - Fence Line
- Existing Building (Bonneville Hotel)
- Limited Common Area - Reserved to the ownership for maintaining building
- ⊙ Placed 1/8" iron rod with Cap marked P.L.S. 4563.

140.0	5th FLOOR	UNIT 005
131.0	4th FLOOR	UNIT 004
122.0	3rd FLOOR	UNIT 003
113.0	2nd FLOOR	UNIT 002
100.0	GROUND FLOOR	UNIT 001
90.5	BASEMENT	

RESIDENTIAL ZONING

STREET

ELEVATION

First American Title Company
Idaho Falls, Idaho 83404

This sketch is made solely for the purpose of assisting in locating the premises. The company assumes no liability for alleged loss or damage which may result from reliance on this map.

