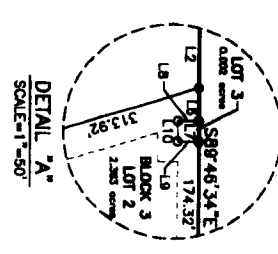
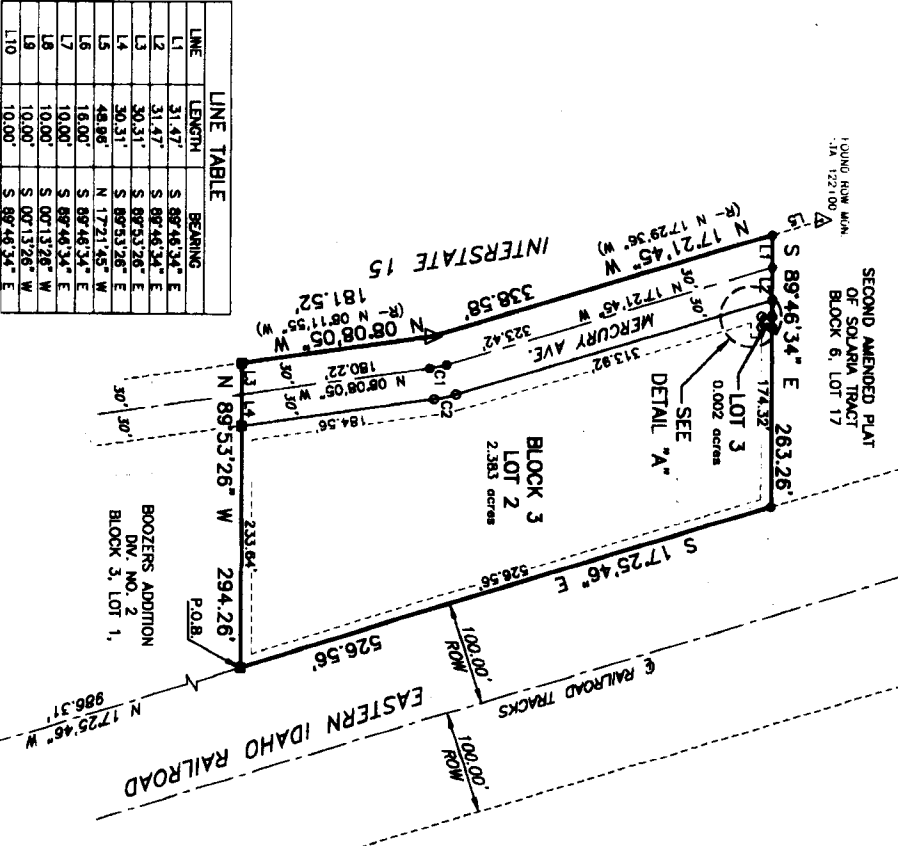


BOOZER ADDITION

DIVISION NO. 3

AN ADDITION TO THE CITY OF IDAHO FALLS, BONNEVILLE COUNTY, IDAHO
A PART OF SECTION 13, TOWNSHIP 2 NORTH, RANGE 37 EAST, B.M.

SECOND AMENDED PLAT
OF SOLARIA TRACT
BLOCK 6, LOT 17
FOUND ROW M.M.
1A 1221.00



First American Title Company
Idaho Falls, Idaho 83404
While this is a photographic reproduction of the recorded plat, the Company assumes no liability for variations, if any, with a re-survey.

LEGEND

- Section control corners
- Set 5/8"x30" iron rod with plastic cap marked P.L.S. 10786
- Set 1/2"x24" iron rod with plastic cap marked P.L.S. 10786
- Found 5/8"x30" iron rod with plastic cap marked P.L.S. 10786
- Found 1/2"x24" iron rod with plastic cap marked P.L.S. 10786
- Found Highway Right-of-Way Monument Found Brass Cap
- Public Utility easements are 15' wide along road frontages and all others are 10' wide unless shown otherwise.
- P.O.B. Point of Beginning
- (R-XXXX) Record of Bearing - 1-15-3(3)117

LINE	LENGTH	BEARING
L1	31.47'	S 89°48'34" E
L2	31.47'	S 89°48'34" E
L3	30.31'	S 89°53'28" E
L4	30.31'	S 89°53'28" E
L5	48.86'	N 17°21'45" W
L6	18.00'	S 89°48'34" E
L7	10.00'	S 89°48'34" E
L8	10.00'	S 00°13'28" W
L9	10.00'	S 00°13'28" W
L10	10.00'	S 89°48'34" E

CURVE TABLE

Curve	Radius	Delta	Length	Chord Bearing	Chord Distance
C1	100.00'	8°13'40"	18.11'	N 12°44'55" W	18.09'
C2	130.00'	8°13'40"	20.94'	N 12°44'55" W	20.91'

