

BOZER ADDITION

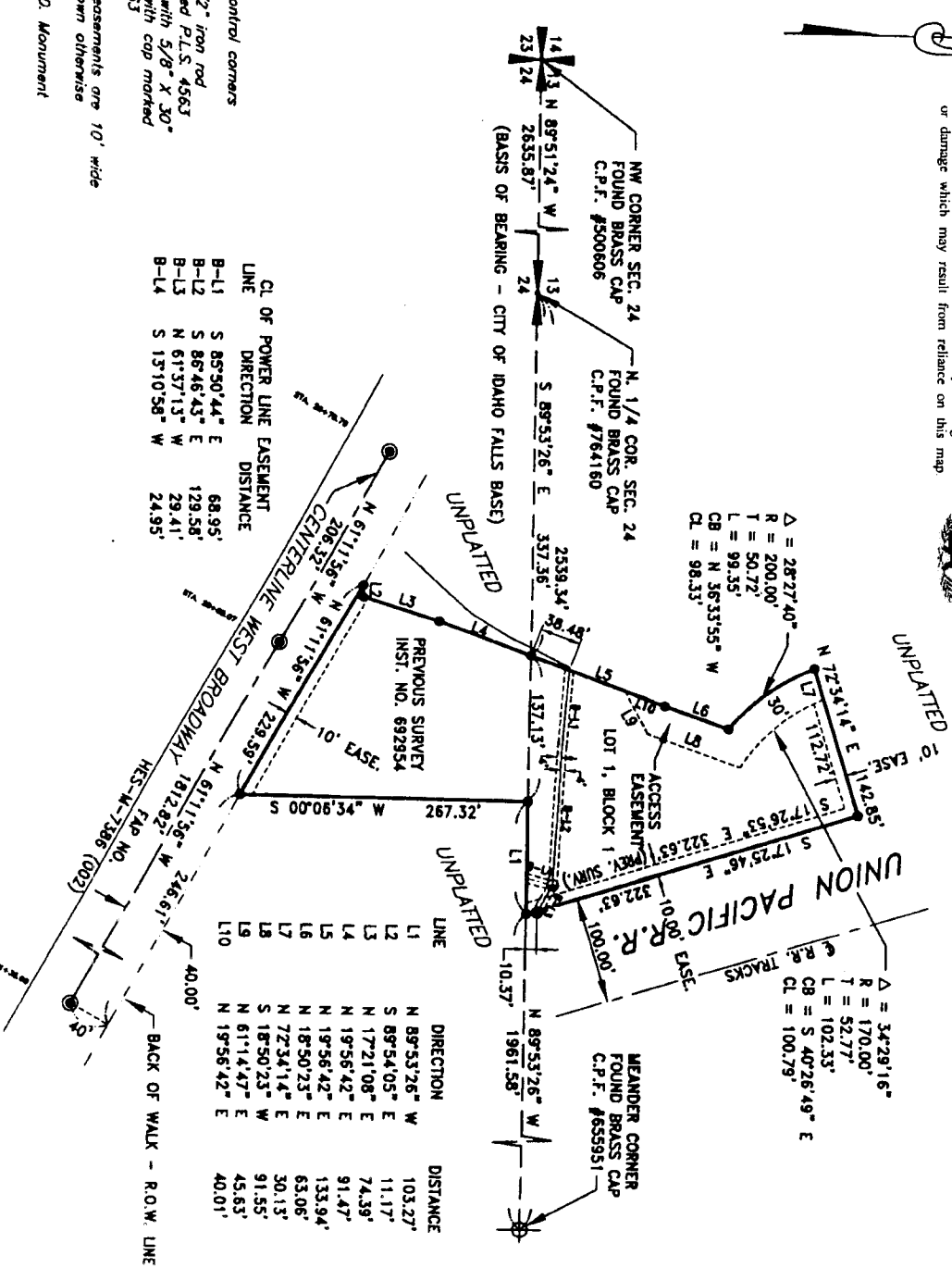
DIVISION NO. 1

AN ADDITION TO THE CITY OF IDAHO FALLS, BONNEVILLE COUNTY, IDAHO
PART OF SECTIONS 13 & 24, T.2 N., R. 37 E., B.M.

First American Title Company

Idaho Falls, Idaho 83404

This sketch is made solely for the purpose of assisting in locating the premises. The company assumes no liability for alleged loss or damage which may result from reliance on this map.



LEGEND

- Section control corners
- Found 1/2" iron rod cap marked P.L.S. 4563
- Replaced with 5/8" x 30" iron rod with cap marked P.L.S. 4563
- All utility easements are 10' wide unless shown otherwise
- Found L.I.D. Monument
- Power pole