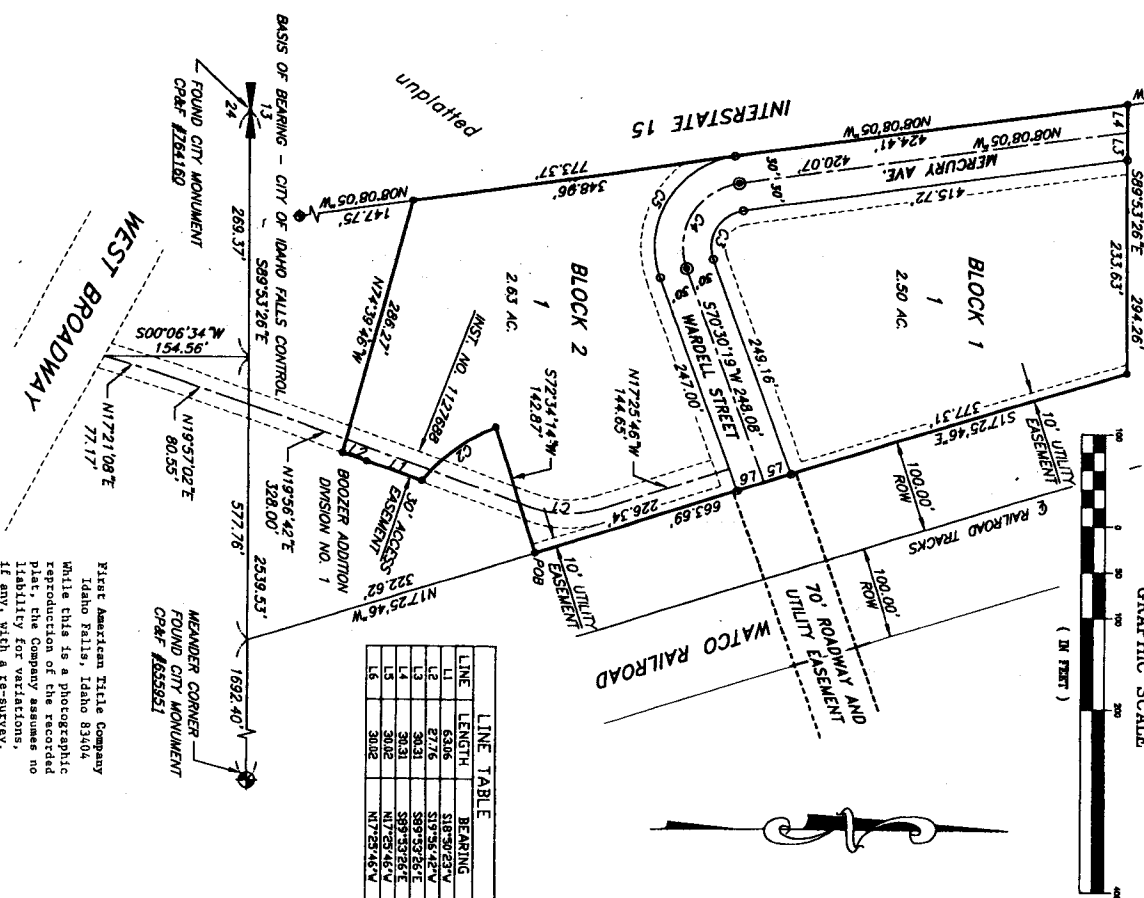
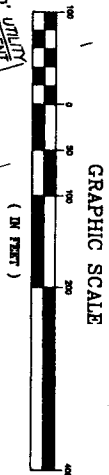


CURVE	LENGTH	RADIUS	CHORD BEARING	CHORD LENGTH	DELTA
C1	75.02	115.00	N01°15'28"E	73.69	37°22'28"
C2	99.35	200.00	S36°53'59"E	98.33	89°27'40"
C3	70.76	40.00	S59°48'53"E	61.89	100°21'36"
C4	123.83	70.00	S59°48'53"E	108.31	100°21'36"
C5	176.91	100.00	S59°48'53"E	154.72	100°21'36"

BOZGER ADDITION

DIVISION NO. 2

PART OF THE SECTION 13, T. 2 N., R. 37 E., B.M.
AN ADDITION TO THE CITY OF IDAHO FALLS, BONNEVILLE COUNTY, IDAHO



LINE	LENGTH	BEARING
L1	63.05	S18°30'23"W
L2	27.76	S19°55'42"W
L3	30.31	S59°53'26"E
L4	30.31	S59°53'26"E
L5	30.02	N17°59'46"W
L6	30.02	N17°59'46"W

- LEGEND**
- Section control corners
 - Placed 5/8x307 iron rod with cap marked P.L.S. 4563
 - Placed 1/2x3/4 iron rod with cap marked P.L.S. 4563
 - Found Right-of-way Monument
 - Utility easements are 15' wide along the street frontage of all lots. All other easements are as shown.
 - Monument to be placed after construction.
 - Point of Beginning

First American Title Company
Idaho Falls, Idaho 83404
While this is a photographic reproduction of the recorded plat, the Company assumes no liability for variations, if any, with a re-survey.