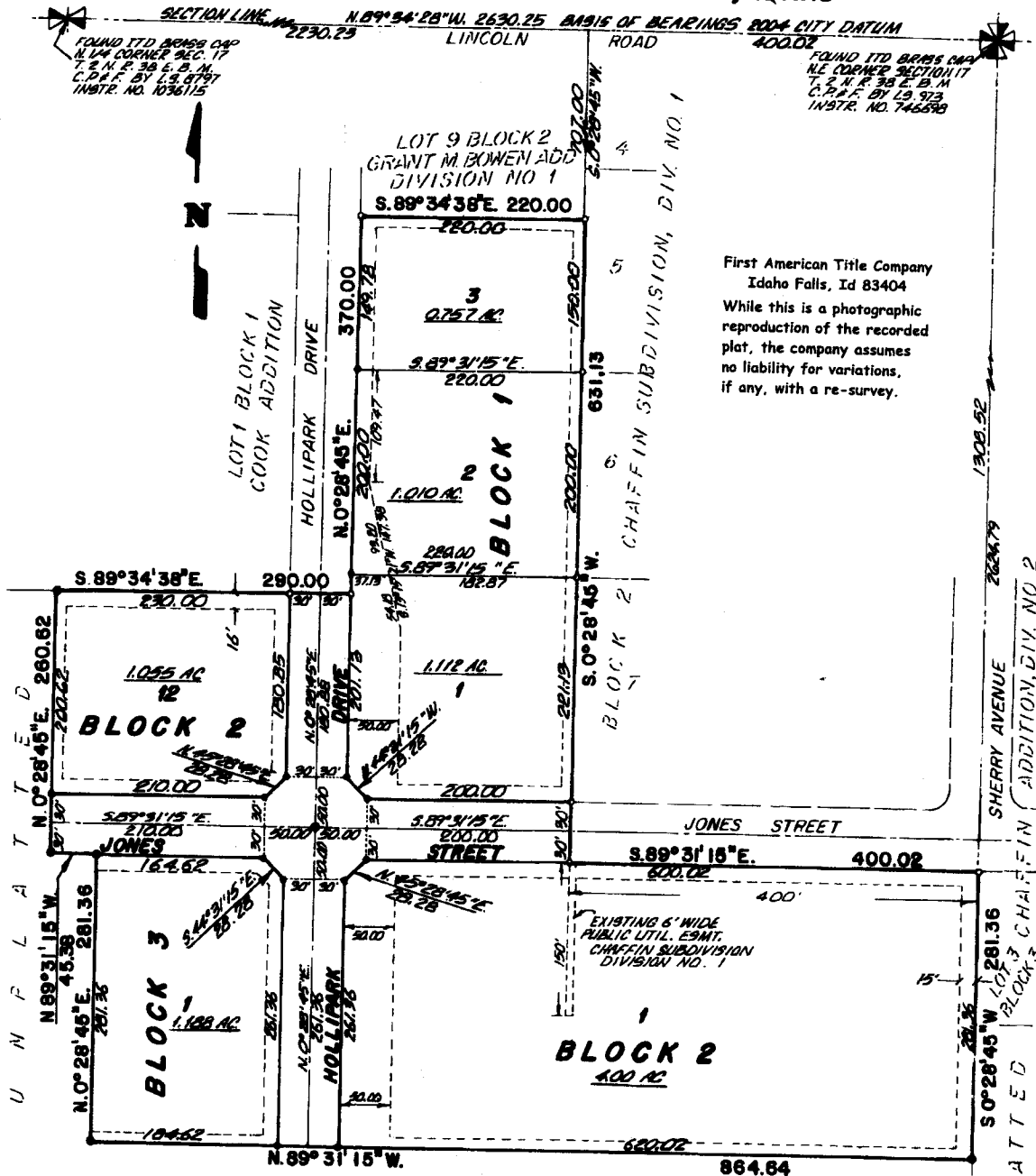


BOWEN ADDITION DIVISION NO. 1

TO THE CITY OF IDAHO FALLS, BONNEVILLE COUNTY, IDAHO
BEING PART OF THE E. 1/2 OF THE N.E. 1/4 OF SECTION 17 T. 2 N., R. 38 E., B.M.
INCLUDING A REPLAT OF LOTS 1 AND 2 BLOCK 3 OF THE CHAFFIN SUBDIVISION,
DIVISION NO. 1, BONNEVILLE COUNTY, IDAHO



First American Title Company
 Idaho Falls, Id 83404
 While this is a photographic reproduction of the recorded plat, the company assumes no liability for variations, if any, with a re-survey.

LEGEND & NOTES

- 5/8" x 30" Steel rebar set with plastic cap stamped L.S. 8795
- 1/2" x 24" Steel rebar set with plastic cap stamped L.S. 8795
- 1/2" Steel rebar found with no caps unless noted otherwise

A fifteen foot wide Public Utility Easement is hereby granted along all road frontages within each lot except for those portions shown otherwise along Hollipark Drive. All other public utility easements are ten foot wide unless noted otherwise.

This division contains 8 lots. (1.526 acre average lot size.)

FOUND CITY BRASS CAP
 E/4 CORNER SEC. 17
 T. 2 N. R. 38 E. B.M.
 C.P.A.F. BY L.S. 973
 11/972. NO. 500675