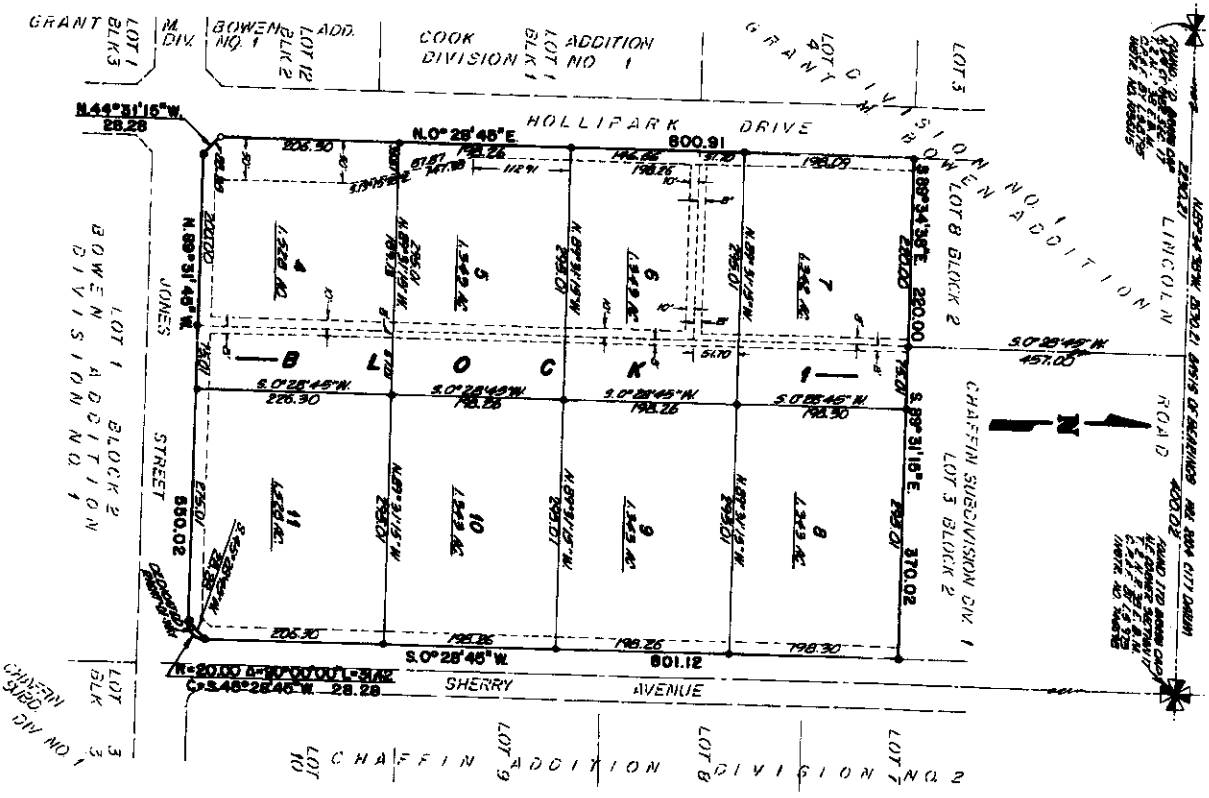


**BOWEN ADDITION
DIVISION NO. 2**

TO THE CITY OF IDAHO FALLS, BONNEVILLE COUNTY, IDAHO
BEING A RE-PLAT OF LOTS 1 THRU 3 BLOCK 1 BOWEN ADDITION DIVISION NO. 1, LOT 9 BLOCK 2
GRANT M. BOWEN ADDITION DIVISION NO. 1, LOTS 4 THRU 7 BLOCK 2 CHAFFIN SUBDIVISION
DIVISION NO. 1 IN THE E. 1/2 N.E. 1/4 SECTION 17, T. 2 N. R. 38 E., B.M.



First American Title Company
Idaho Falls, ID 83404

While this is a photographic reproduction of the recorded plat, the company assumes no liability for variations, if any, with a re-survey.

- LEGEND & NOTES**
- 5/8" x 3/4" Steel nails set into plates per standard I.S.R. 705
 - 1/2" x 2" Steel nails set into plates per standard I.S.R. 705
 - 5/8" Steel roller found and set stamped I.S.R. 705
 - 1/2" Steel roller found and set stamped I.S.R. 705

A. Figure Not to Scale: This plat is a photographic reproduction of the recorded plat and is not a survey. It is not intended to be used as a survey. The distance between 0 and 1 is 2000 feet (approximately 1/2 mile).