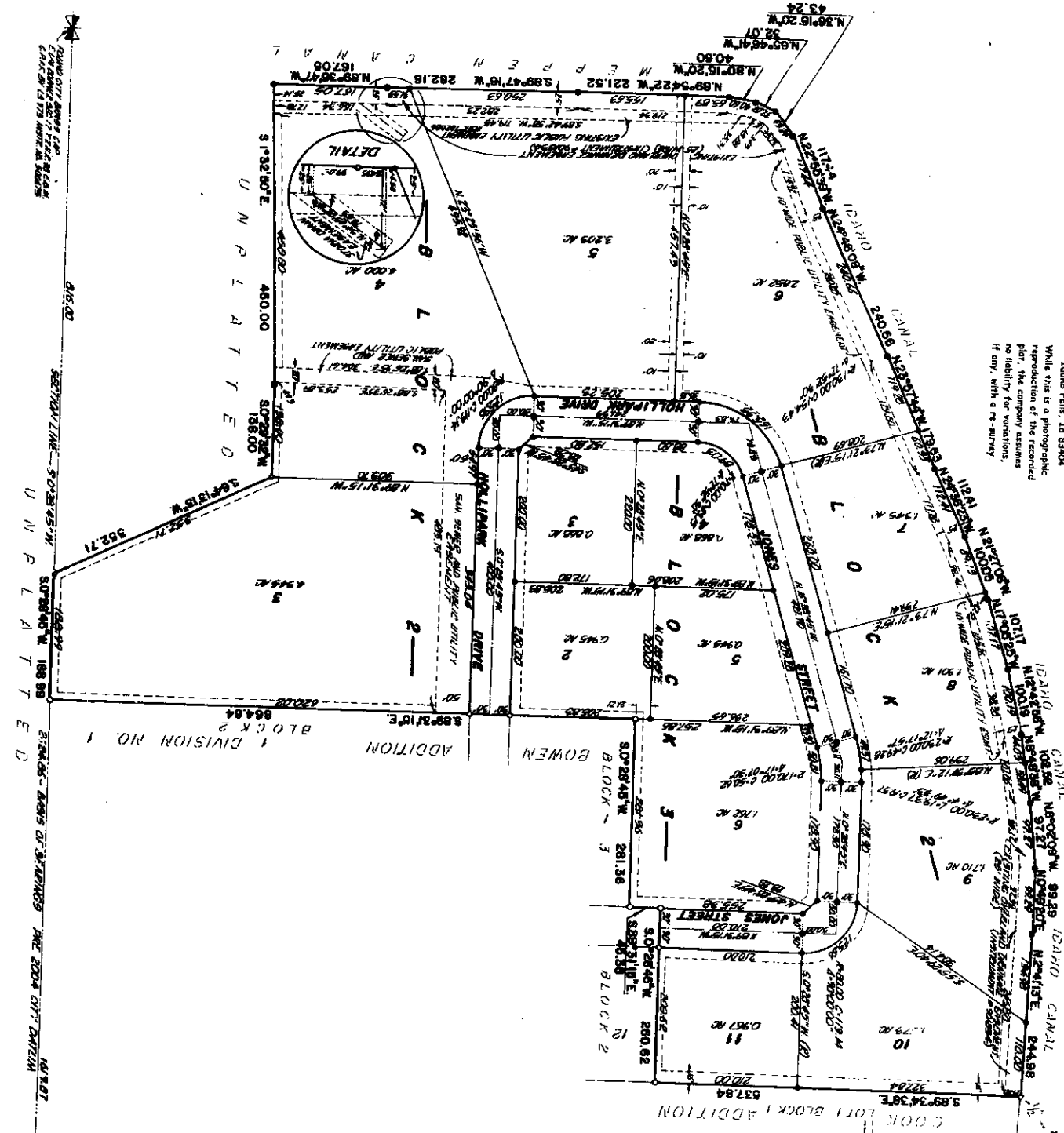


BOWEN ADDITION, DIVISION NO. 3 TO THE CITY OF IDAHO FALLS, BONNEVILLE COUNTY, IDAHO IN THE E 1/2 N E 1/4 SECTION 17 T 2 N. R. 38 E. B.M.

First American Title Company
 Idaho Falls, ID 83404
 While this is a photographic reproduction of the recorded plat, the company assumes no liability for variations, if any, with a re-survey.



LEGEND & NOTES

- 30" x 30" Shot hole set with public cap stamped S. 8725
 - 1 1/2" x 2 1/2" Shot hole set with public cap stamped S. 8725
 - 5/8" Shot hole found with cap stamped S. 8725
 - 1/2" Shot hole found with cap stamped S. 8725
 - 1/2" Shot hole found with cap stamped S. 8725
 - 1/2" Shot hole found with cap stamped S. 8725
- A distance from north-south lines to boundary ground line at each boundary within each lot shall be shown. All other public utility easements are the same with other distances.
- This addition contains 1 block, 11 lots and acreage to suit.

PLAT NO. 100
 17 T 2 N. R. 38 E. B.M.
 17 T 2 N. R. 38 E. B.M.
 17 T 2 N. R. 38 E. B.M.