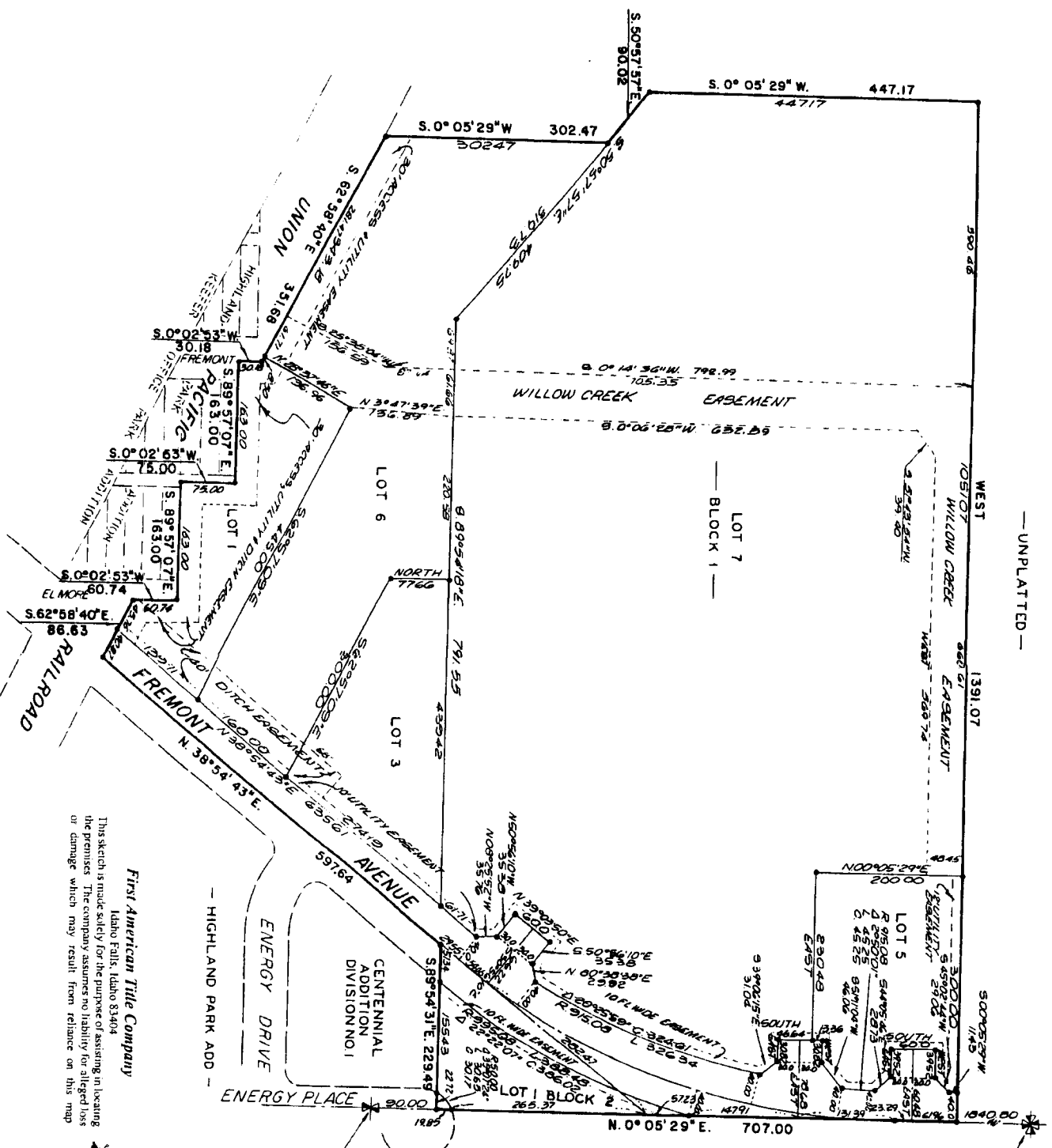


**THE FIRST AMENDED PLAT OF
BOYER ADDITION, DIVISION NO. 1
TO THE CITY OF IDAHO FALLS, BONNEVILLE COUNTY, IDAHO
AMENDING LOTS 2 AND 4 BLOCK 1 BOYER ADDITION, DIVISION NO. 1**



— UNPLATTED —

— UNPLATTED —

NOTES
• DASHED ROWS
UTILITY EASEMENTS
(WIDTHS AS SHOWN)

First American Title Company
Idaho Falls, Idaho 83404
This sketch is made solely for the purpose of assisting in locating the premises. This company assumes no liability for alleged loss or damage which may result from reliance on this map.

