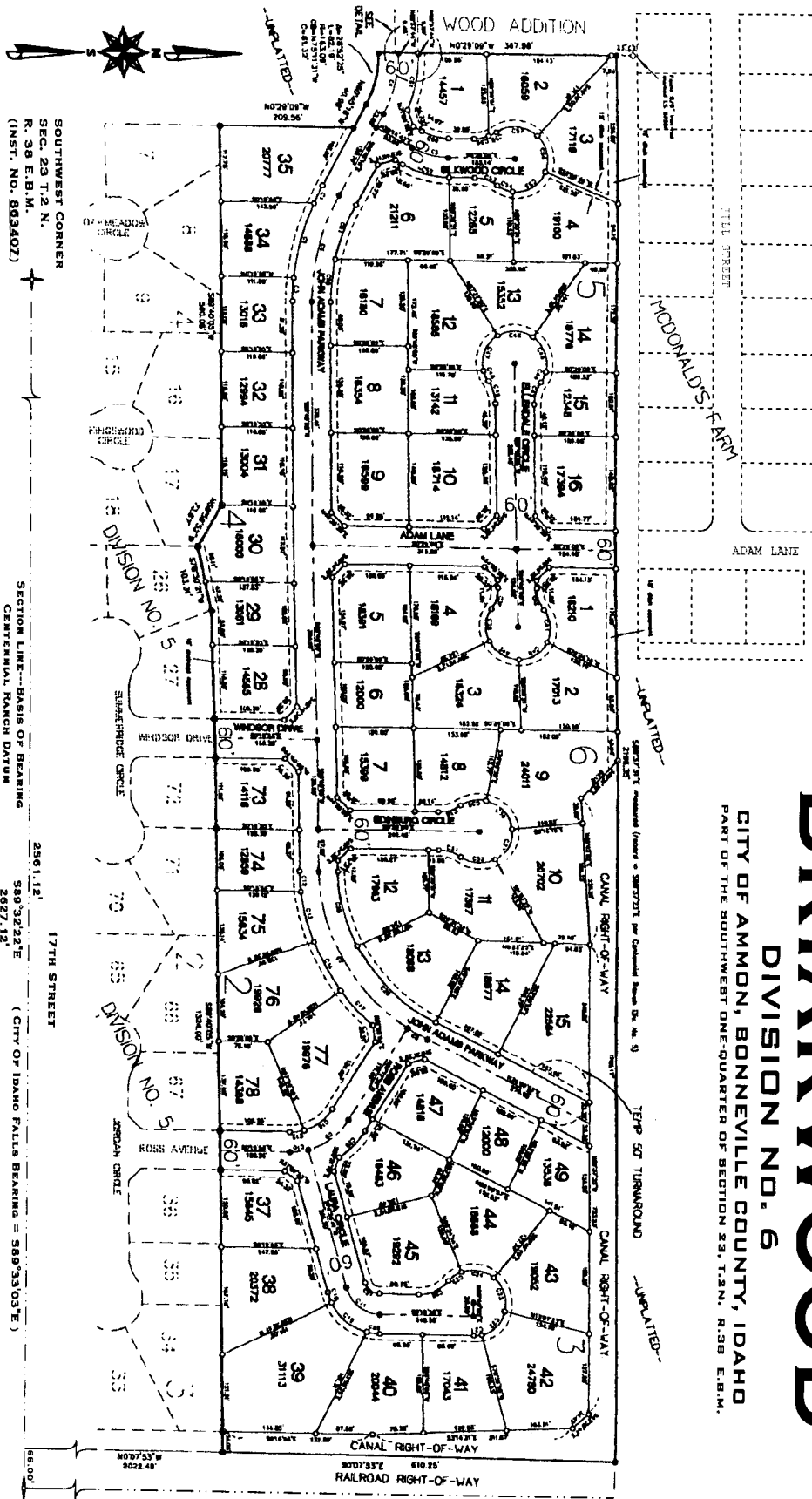
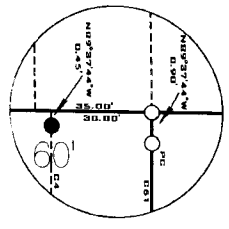


# BRIARWOOD

DIVISION NO. 6  
CITY OF AMMON, BONNEVILLE COUNTY, IDAHO  
PART OF THE SOUTHWEST ONE-QUARTER OF SECTION 23, T.2N., R.38 E.18M.



WEST END OF JOHN ADAMS PARKWAY



This sketch is made solely for the purpose of assisting in locating the premises. The company assumes no liability for alleged loss or damage which may result from reliance on this map



First American Title Company  
Idaho Falls, Idaho 83404

- NOTES**
- INDICATES A 1/2" x 3/4" IRON NAIL PLACED WITH A YELLOW PLASTIC CAP NUMBERED L.S. 722.
  - INDICATES A 3/4" x 3/4" IRON NAIL PLACED WITH A YELLOW PLASTIC CAP NUMBERED L.S. 723.
  - INDICATES A 5/8" x 3/4" IRON NAIL PLACED WITH A YELLOW PLASTIC CAP NUMBERED L.S. 724.
  - INDICATES A 3/4" x 3/4" IRON NAIL PLACED WITH A YELLOW PLASTIC CAP NUMBERED L.S. 725.
  - INDICATES A 1/2" x 3/4" IRON NAIL PLACED WITH A YELLOW PLASTIC CAP NUMBERED L.S. 726.
  - INDICATES A 1/2" x 3/4" IRON NAIL PLACED WITH A YELLOW PLASTIC CAP NUMBERED L.S. 727.
  - INDICATES A 1/2" x 3/4" IRON NAIL PLACED WITH A YELLOW PLASTIC CAP NUMBERED L.S. 728.
  - INDICATES A 1/2" x 3/4" IRON NAIL PLACED WITH A YELLOW PLASTIC CAP NUMBERED L.S. 729.
  - INDICATES A 1/2" x 3/4" IRON NAIL PLACED WITH A YELLOW PLASTIC CAP NUMBERED L.S. 730.
  - INDICATES A 1/2" x 3/4" IRON NAIL PLACED WITH A YELLOW PLASTIC CAP NUMBERED L.S. 731.
  - INDICATES A 1/2" x 3/4" IRON NAIL PLACED WITH A YELLOW PLASTIC CAP NUMBERED L.S. 732.
  - INDICATES A 1/2" x 3/4" IRON NAIL PLACED WITH A YELLOW PLASTIC CAP NUMBERED L.S. 733.
  - INDICATES A 1/2" x 3/4" IRON NAIL PLACED WITH A YELLOW PLASTIC CAP NUMBERED L.S. 734.
  - INDICATES A 1/2" x 3/4" IRON NAIL PLACED WITH A YELLOW PLASTIC CAP NUMBERED L.S. 735.
  - INDICATES A 1/2" x 3/4" IRON NAIL PLACED WITH A YELLOW PLASTIC CAP NUMBERED L.S. 736.
  - INDICATES A 1/2" x 3/4" IRON NAIL PLACED WITH A YELLOW PLASTIC CAP NUMBERED L.S. 737.
  - INDICATES A 1/2" x 3/4" IRON NAIL PLACED WITH A YELLOW PLASTIC CAP NUMBERED L.S. 738.
  - INDICATES A 1/2" x 3/4" IRON NAIL PLACED WITH A YELLOW PLASTIC CAP NUMBERED L.S. 739.
  - INDICATES A 1/2" x 3/4" IRON NAIL PLACED WITH A YELLOW PLASTIC CAP NUMBERED L.S. 740.
  - INDICATES A 1/2" x 3/4" IRON NAIL PLACED WITH A YELLOW PLASTIC CAP NUMBERED L.S. 741.
  - INDICATES A 1/2" x 3/4" IRON NAIL PLACED WITH A YELLOW PLASTIC CAP NUMBERED L.S. 742.
  - INDICATES A 1/2" x 3/4" IRON NAIL PLACED WITH A YELLOW PLASTIC CAP NUMBERED L.S. 743.
  - INDICATES A 1/2" x 3/4" IRON NAIL PLACED WITH A YELLOW PLASTIC CAP NUMBERED L.S. 744.
  - INDICATES A 1/2" x 3/4" IRON NAIL PLACED WITH A YELLOW PLASTIC CAP NUMBERED L.S. 745.
  - INDICATES A 1/2" x 3/4" IRON NAIL PLACED WITH A YELLOW PLASTIC CAP NUMBERED L.S. 746.
  - INDICATES A 1/2" x 3/4" IRON NAIL PLACED WITH A YELLOW PLASTIC CAP NUMBERED L.S. 747.
  - INDICATES A 1/2" x 3/4" IRON NAIL PLACED WITH A YELLOW PLASTIC CAP NUMBERED L.S. 748.
  - INDICATES A 1/2" x 3/4" IRON NAIL PLACED WITH A YELLOW PLASTIC CAP NUMBERED L.S. 749.
  - INDICATES A 1/2" x 3/4" IRON NAIL PLACED WITH A YELLOW PLASTIC CAP NUMBERED L.S. 750.
  - INDICATES A 1/2" x 3/4" IRON NAIL PLACED WITH A YELLOW PLASTIC CAP NUMBERED L.S. 751.
  - INDICATES A 1/2" x 3/4" IRON NAIL PLACED WITH A YELLOW PLASTIC CAP NUMBERED L.S. 752.
  - INDICATES A 1/2" x 3/4" IRON NAIL PLACED WITH A YELLOW PLASTIC CAP NUMBERED L.S. 753.
  - INDICATES A 1/2" x 3/4" IRON NAIL PLACED WITH A YELLOW PLASTIC CAP NUMBERED L.S. 754.
  - INDICATES A 1/2" x 3/4" IRON NAIL PLACED WITH A YELLOW PLASTIC CAP NUMBERED L.S. 755.
  - INDICATES A 1/2" x 3/4" IRON NAIL PLACED WITH A YELLOW PLASTIC CAP NUMBERED L.S. 756.
  - INDICATES A 1/2" x 3/4" IRON NAIL PLACED WITH A YELLOW PLASTIC CAP NUMBERED L.S. 757.
  - INDICATES A 1/2" x 3/4" IRON NAIL PLACED WITH A YELLOW PLASTIC CAP NUMBERED L.S. 758.
  - INDICATES A 1/2" x 3/4" IRON NAIL PLACED WITH A YELLOW PLASTIC CAP NUMBERED L.S. 759.
  - INDICATES A 1/2" x 3/4" IRON NAIL PLACED WITH A YELLOW PLASTIC CAP NUMBERED L.S. 760.

18320

INDICATES LOT AREA IN SQUARE FEET