

1ST AMENDED PLAT OF BRIGGS COMMERCIAL PLAZA

unplatted

BONNEVILLE COUNTY, IDAHO
PART OF THE SE 1/4, SECTION 5, T.2 N., R. 38 E., B.M.

First American Title Company

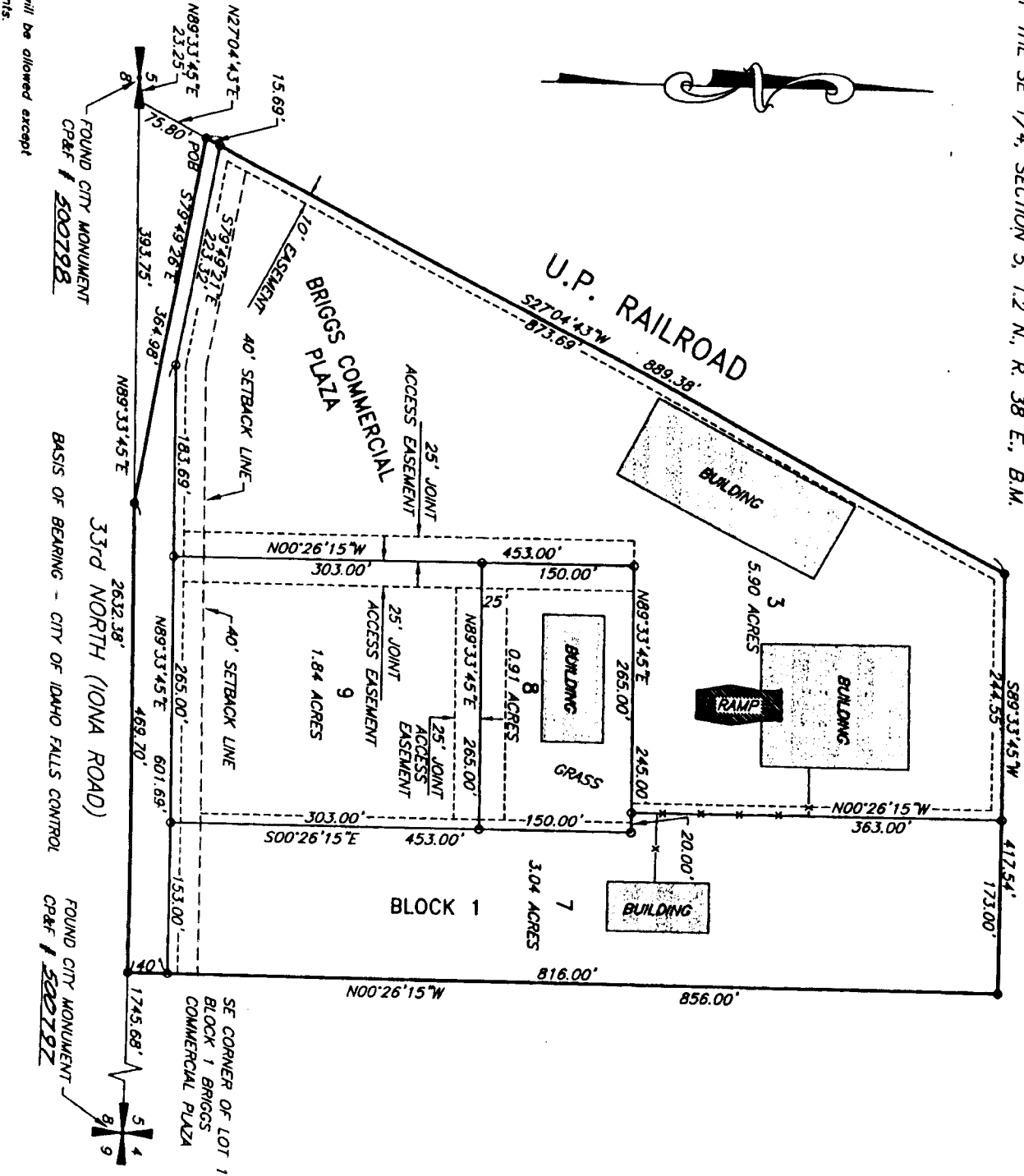
Idaho Falls, Idaho 83404

This sketch is made solely for the purpose of assisting in locating the premises. The company assumes no liability for alleged loss or damage which may result from reliance on this map.



LEGEND

- Section control corners
- Placed 1/2" iron rod with cap marked P.L.S. 4563
- Placed 5/8" iron rod with cap marked P.L.S. 4563
- Utility easements are 10' wide along the frontage of all lots. Side yard and rear yard easements are 8' unless otherwise shown.
- Point of Beginning
- Fence Line



NOTE: No direct access to Iona Road will be allowed except through approved access easements.

FOUND CITY MONUMENT
CR# 1 500798

33rd NORTH (IONA ROAD)
BASIS OF BEARING - CITY OF IDAHO FALLS CONTROL

FOUND CITY MONUMENT
CR# 1 500792

SE CORNER OF LOT 1
BLOCK 1 BRIGGS
COMMERCIAL PLAZA