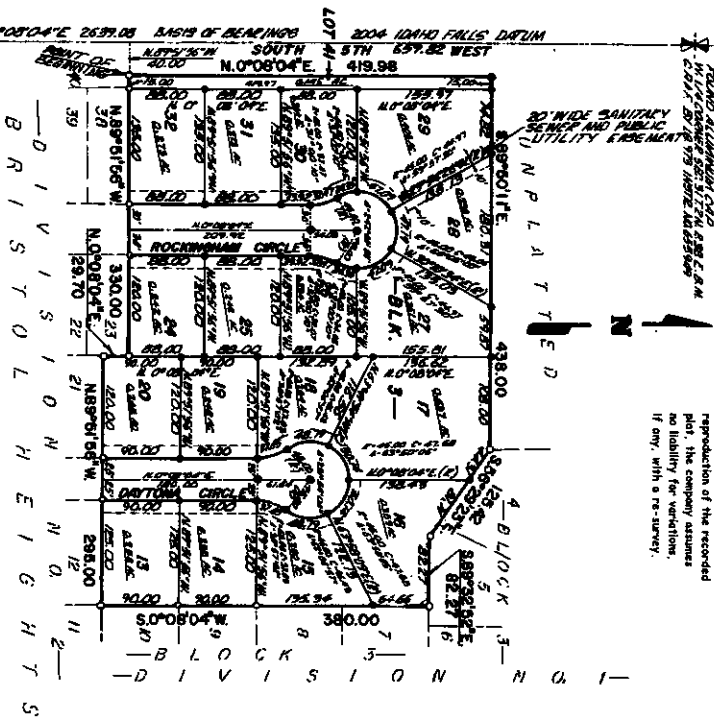


BRISTOL HEIGHTS DIVISION NO. 3

AN ADDITION TO THE CITY OF IDAHO FALLS,
BONNEVILLE COUNTY, IDAHO
BEING PART OF GOVERNMENT LOT 5, SECTION 31 T. 2 N. R. 39 E., B.M.

First American Title Company
Idaho Falls, ID 83404

While this is a photographic reproduction of the recorded plat, the company assumes no liability for variations, if any, with a re-survey.



LEGEND & NOTES

- 5/8" x 3/8" Steel rebar set with plastic cap stamped L.S. 8785
 - 1/2" x 1/4" Steel rebar set with plastic cap stamped L.S. 8785
 - 5/8" Steel rebar fixed with plastic cap stamped L.S. 8785
 - 1/2" Steel rebar fixed with plastic cap stamped L.S. 8785
- (2) Showing where to install the intersecting curb.
- Notes from utility: Utility Easement is hereby granted along all road frontages within and in all other public utility easements are given. Any work which would affect such easements.
- Lot 41, Block 3, is a subdivider lot and public utility easement to be withdrawn by the Idaho Owners Association.
- Direct access from lot area (lot 5) West is NOT PERMITTED.

BOUNDARY CORNER
CORNER OF
SOUTH 8TH
N. 0° 08' 04" E
2637.00
WEST

BOUNDARY CORNER
CORNER OF
SOUTH 8TH
N. 0° 08' 04" E
419.98
WEST

