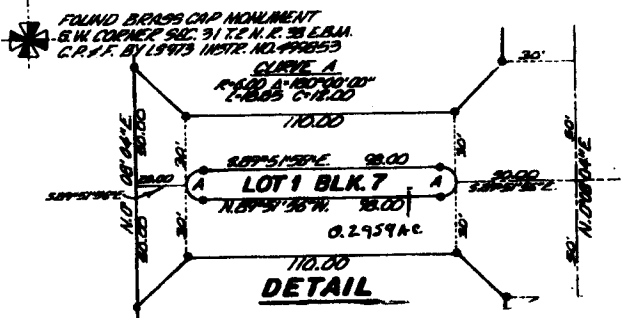
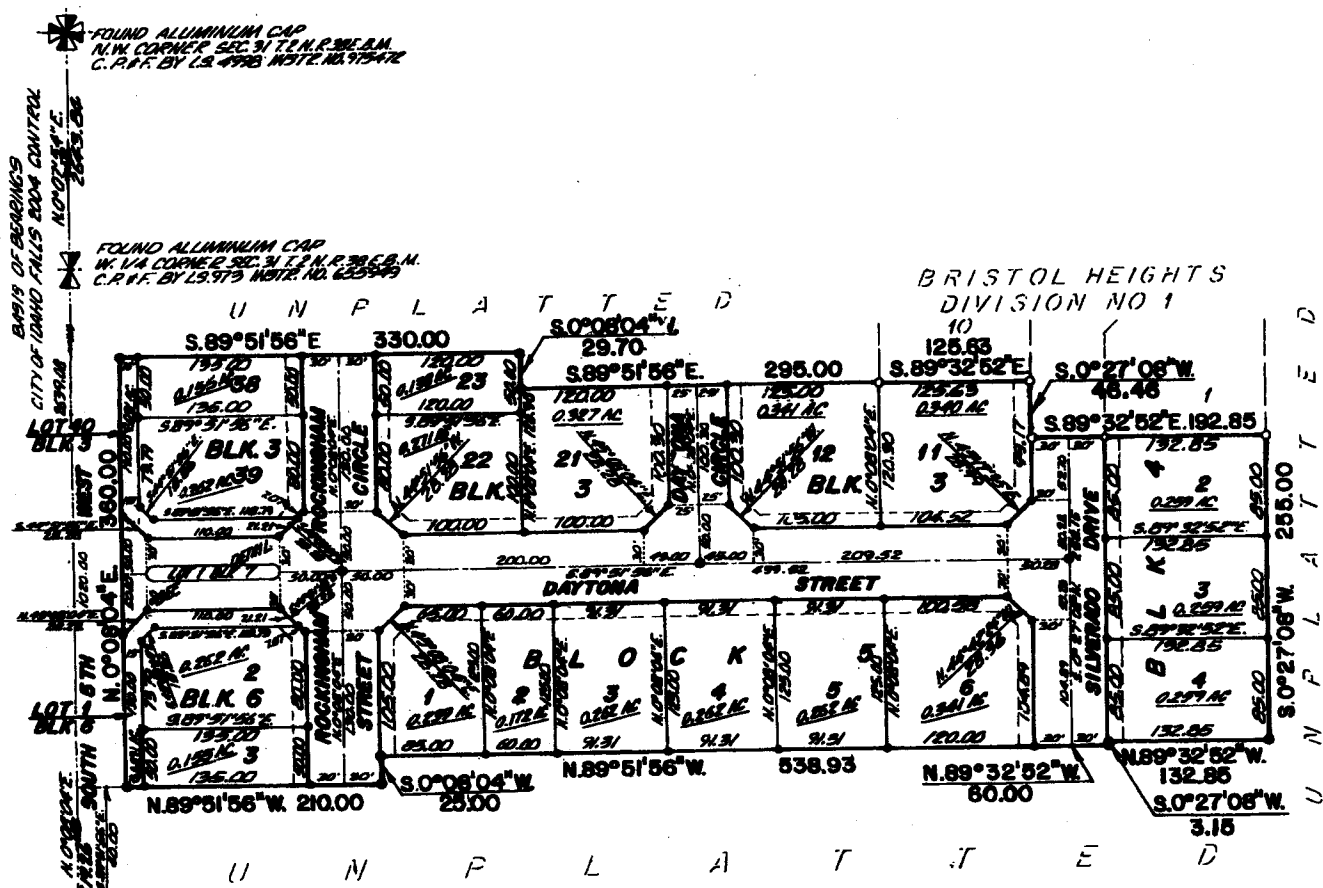


BRISTOL HEIGHTS DIVISION NO. 2

AN ADDITION TO THE CITY OF IDAHO FALLS,
BONNEVILLE COUNTY, IDAHO

BEING PART OF GOVERNMENT LOT 3, SECTION 31 T.2 N. R. 38 E., B.M.



First American Title Company
Idaho Falls, Id 83404
While this is a photographic reproduction of the recorded plat, the company assumes no liability for variations, if any, with a re-survey.

LEGEND & NOTES

- 5/8" x 3/8" Steel rebar set with plastic cap stamped L.S.8795
 - 1/2" x 24" Steel rebar set with plastic cap stamped L.S.8795
 - 5/8" Steel rebar found with plastic cap stamped L.S.8795
- A fifteen foot wide Public Utility Easement is hereby granted along all roof frontages within each lot. All other public utility easements are eight foot wide unless noted otherwise.
- Lot 40, Block 3, Lot 1, Block 6 and Lot 1, Block 7 are Landscape lots to be maintained by the Home Owners Association
- Direct access from lots onto 6th West IS NOT PERMITTED.