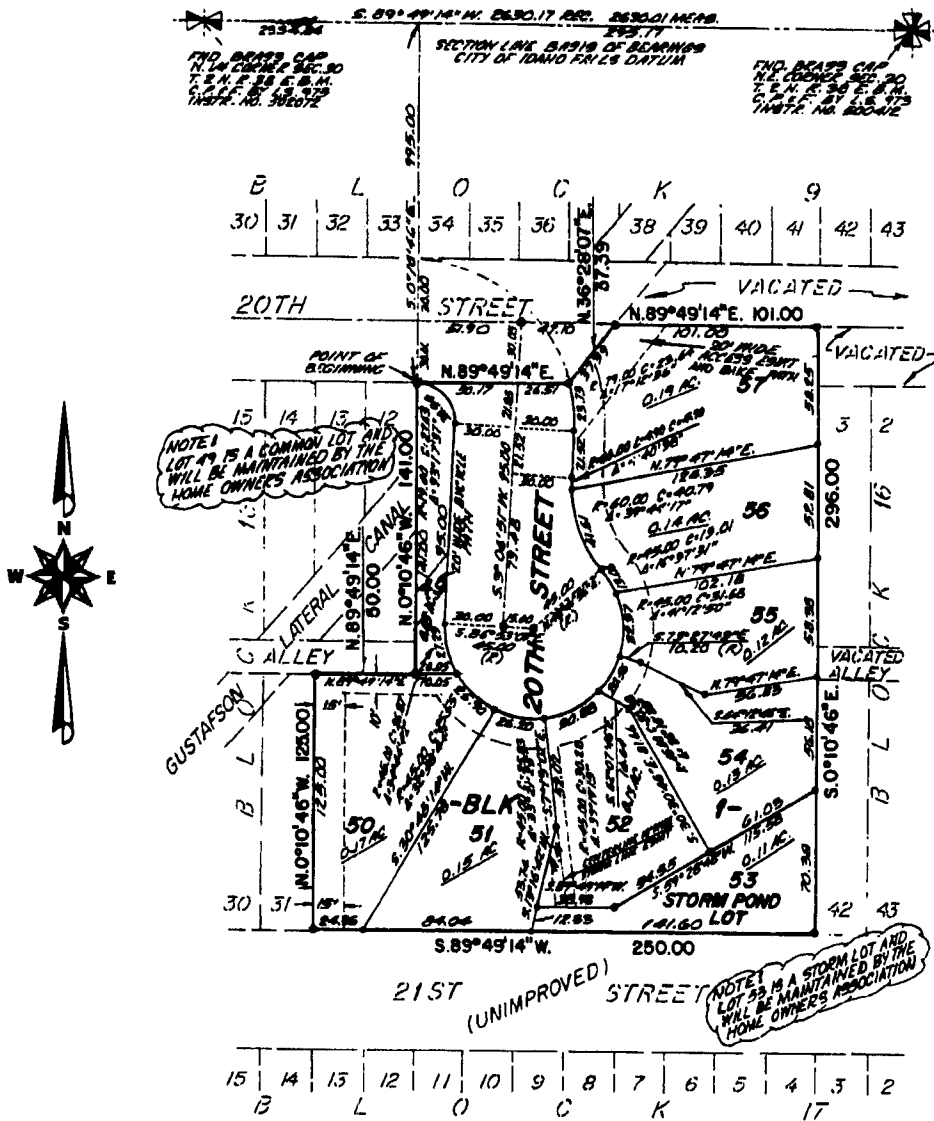


FIRST AMENDED PLAT OF THE BRODBECK'S ADDITION

TO THE CITY OF IDAHO FALLS, BONNEVILLE COUNTY, IDAHO
BEING A REPLAT OF LOTS 4 THRU 11, 32 THRU 41, PART OF THE VACATED ALLEY IN BLOCK 16
AND VACATED PART OF 20TH STREET IN THE N.E. 1/4 N.E. 1/4 SECTION 30, T. 2 N. R. 38 E. B.M.



First American Title Company
 Idaho Falls, Idaho 83402
 This sketch is made solely for the purpose of assisting in locating the premises. The company assumes no liability for alleged loss or damage which may result from reliance on this map.

LEGEND & NOTES

- 5/8" x 30" Steel rebar set with plastic cap stamped L.S. 8785
 - 1/2" x 24" Steel rebar set with plastic cap stamped L.S. 8785
 - A fifteen foot wide Utility Easement is hereby granted along road frontages as shown with the exception of Lot 48, Block 1 which is totally consumed by utility easement. All other easements are as noted.
- Vehicular access onto 21st Street (unimproved) **IS NOT ALLOWED**