

BROOKHAVEN SUBDIVISION

DIVISION NO. 1

BONNEVILLE COUNTY, IDAHO
 PART OF THE N.E. CORNER SECTION 33, T.2N., R.38E.B.M.
 DAVID E. BENTON & ASSOCIATES
 CONSULTING ENGINEERS
 IDAHO FALLS,
 IDAHO

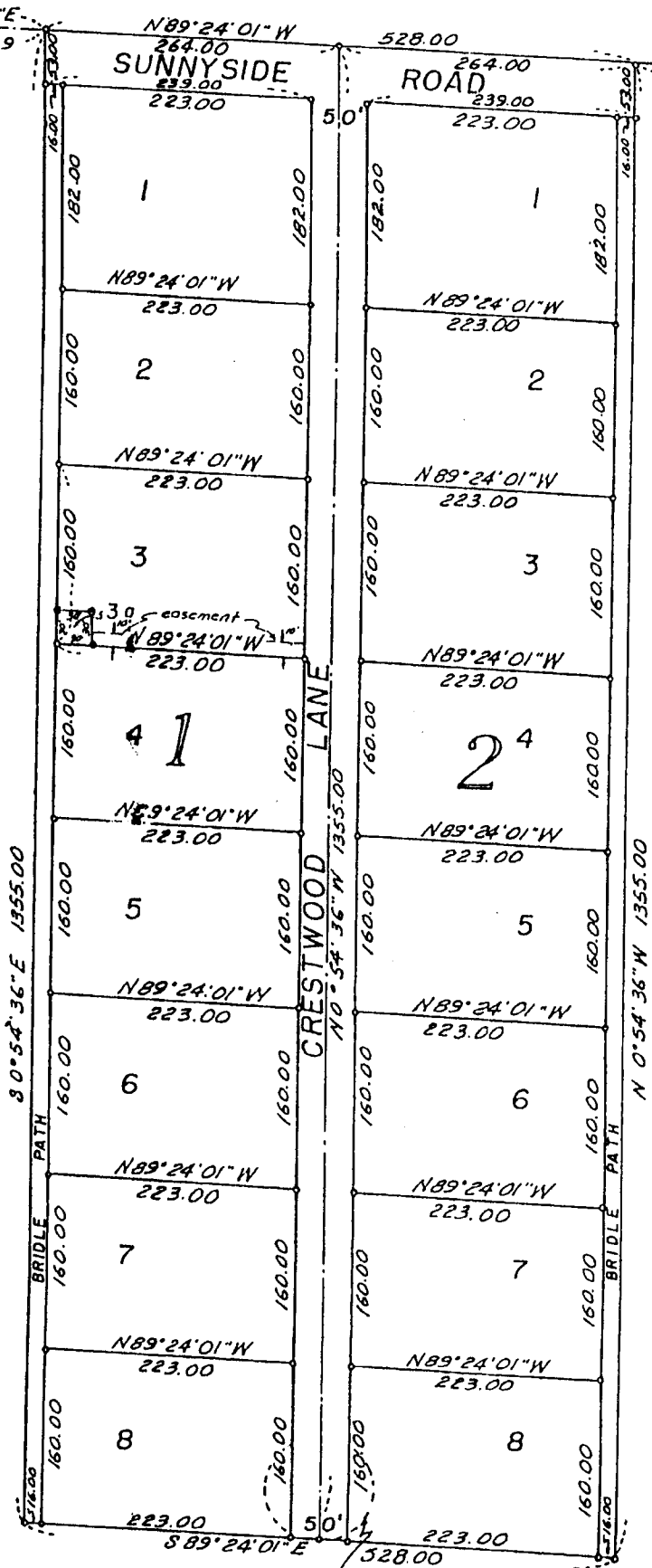
First American Title Company

Idaho Falls, Idaho 83404
 This sketch is made solely for the purpose of assisting in locating the premises. The company assumes no liability for alleged loss or damage which may result from reliance on this map.



North 1/4 Cor.
 Section 33
 T.2N., R.38E.B.M.
 (Brass Cap)

N.E. Corner
 Section 33
 T.2N., R.38E.
 (Brass Cap)



100' Diam. Cul-de-sac Easement
 until road is opened