

BROOKSIDE DIVISION NO. 4

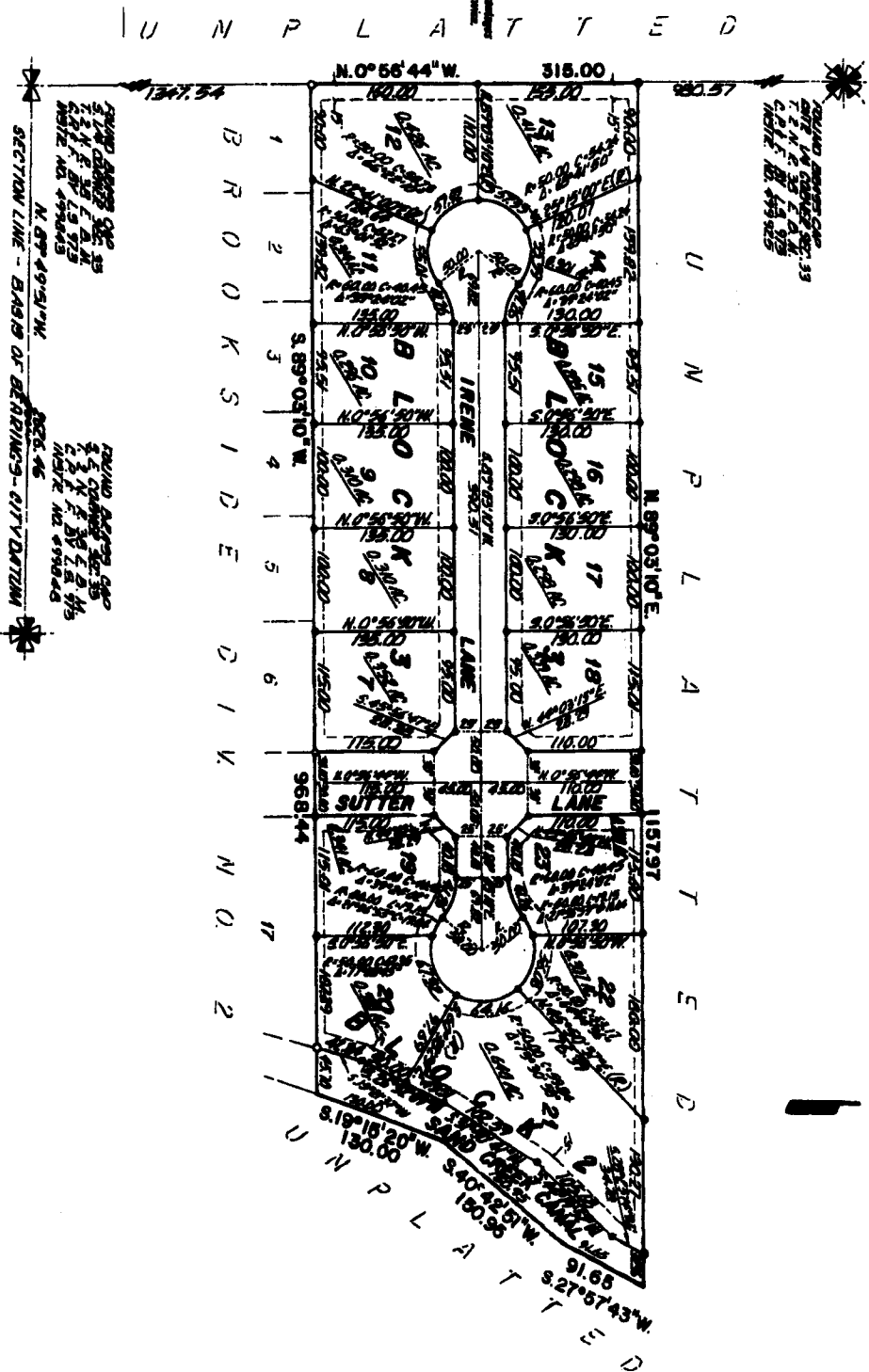
AN ADDITION TO THE CITY OF IDAHO FALLS BONNEVILLE COUNTY, IDAHO

BEING PART OF THE NW1/4 OF THE S.E.1/4 OF SECTION 33, T.2 N., R.38 E., B.M.

First American Title Company
 Idaho Falls, Idaho 83404
 While this is a photographic
 reproduction of the recorded
 plat, the Company assumes no
 liability for variations,
 if any, with a re-survey.

LEGEND & NOTES

- 3/4" x 3/4" Steel plate set with public copy stamped L.S. 8786
 - 1/2" x 3/4" Steel plate set with public copy stamped L.S. 8785
 - 3/4" Steel plate found with copy stamped L.S. 8785
 - 1/2" Steel plate found with copy stamped L.S. 8785
- A witness here with (Name) (Address) is hereby granted leave of said findings
 which need be. All other comments are right hand side unless stated otherwise.



SECTION LINE - BASIS OF BEARINGS - CITY DATUM

3/4" x 3/4" Steel plate set with public copy stamped L.S. 8786
 1/2" x 3/4" Steel plate set with public copy stamped L.S. 8785
 3/4" Steel plate found with copy stamped L.S. 8785
 1/2" Steel plate found with copy stamped L.S. 8785