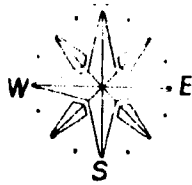


NW Cor Sec 1
T2N, R38E.B.M



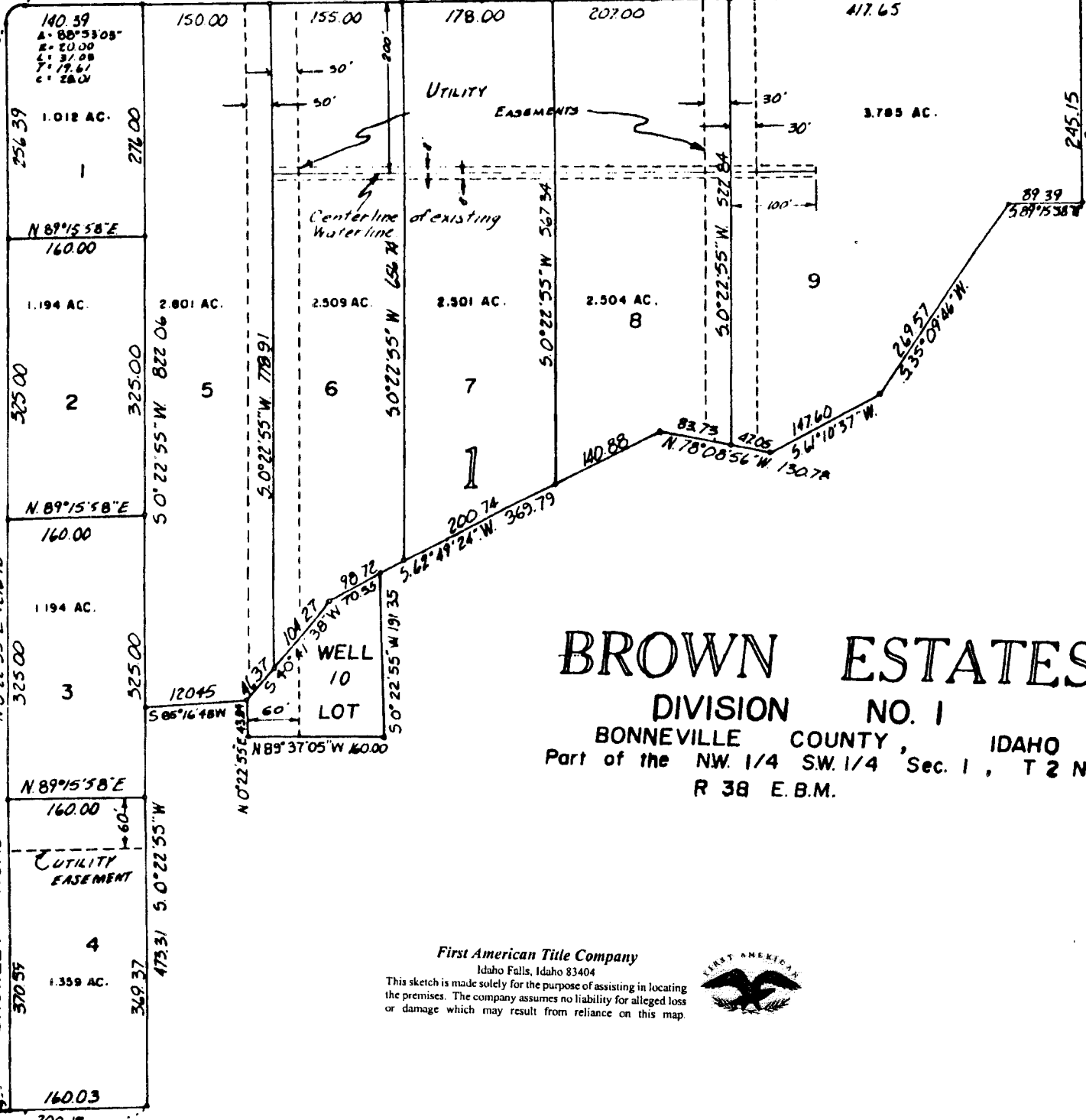
N 0°22'55"

N 89°15'58" E 1307.65

RUSHTON ROAD

N 89°15'58" E 1248.04

417.65



BROWN ESTATES
 DIVISION NO. 1
 BONNEVILLE COUNTY, IDAHO
 Part of the NW 1/4 SW 1/4 Sec. 1, T 2 N,
 R 38 E.B.M.

First American Title Company

Idaho Falls, Idaho 83404

This sketch is made solely for the purpose of assisting in locating the premises. The company assumes no liability for alleged loss or damage which may result from reliance on this map.



SW Cor. Sec. 1
T2N, R38E.B.M.