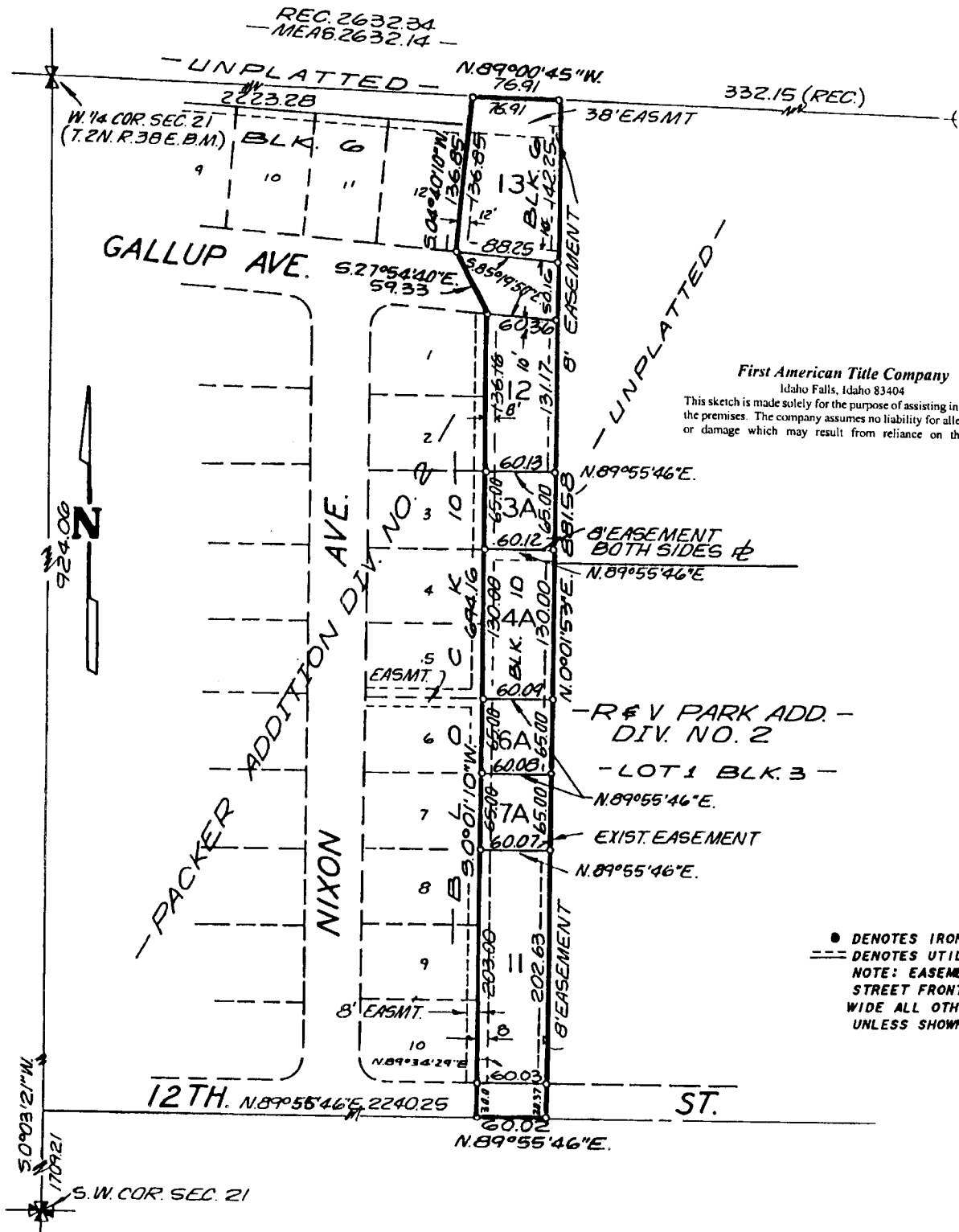


BRUNT, NIXON, MERRILL SUBDIVISION

DIVISION NO. 1, AN ADDITION TO THE CITY OF IDAHO FALLS, IDAHO

PART OF THE S.W. 1/4 OF SEC. 21, T.2N. R.38 E.B.M.



First American Title Company
 Idaho Falls, Idaho 83404

This sketch is made solely for the purpose of assisting in locating the premises. The company assumes no liability for alleged loss or damage which may result from reliance on this map



- DENOTES IRON RODS
- DENOTES UTILITY EASEMENTS
- NOTE: EASEMENTS ALONG STREET FRONTAGE ARE 10 FT. WIDE ALL OTHERS ARE 8 FT. UNLESS SHOWN OTHERWISE