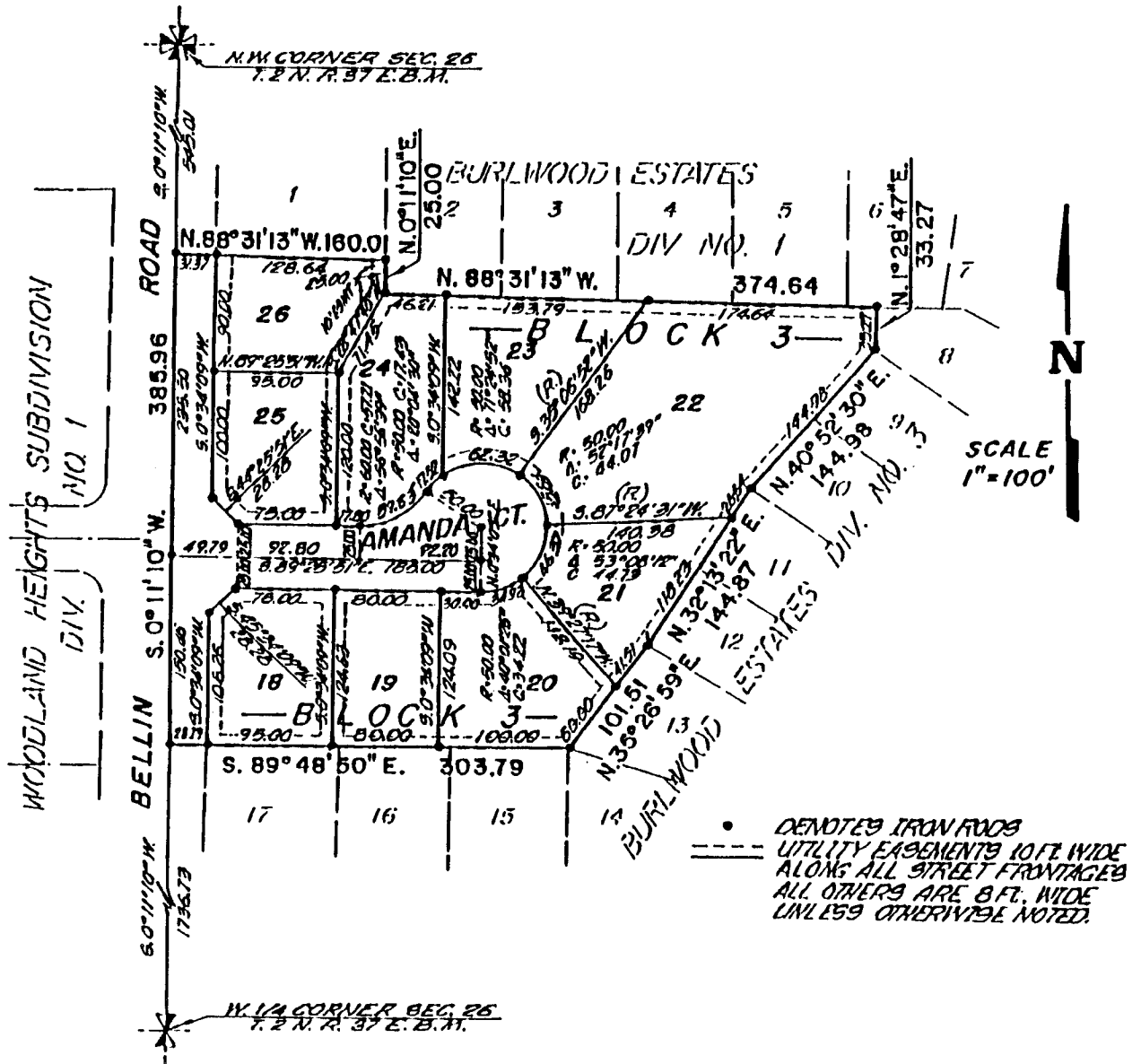


BURLWOOD ESTATES DIVISION NO. 4

AN ADDITION TO THE CITY OF IDAHO FALLS, BONNEVILLE COUNTY, IDAHO
PART OF THE N.W. 1/4 OF SECTION 26, T. 2N. R. 37 E.B.M.



• DENOTES IRON PEGS
 --- UTILITY EASEMENTS 10 FT. WIDE
 ALONG ALL STREET FRONTAGES
 ALL OTHERS ARE 8 FT. WIDE
 UNLESS OTHERWISE NOTED.

First American Title Company
 Idaho Falls, Idaho 83404

This sketch is made solely for the purpose of assisting in locating the premises. The company assumes no liability for alleged loss or damage which may result from reliance on this map.

