

THE FIRST AMENDED PLAT OF  
 LOTS 3 AND 4, BLOCK 1 AND LOTS 3 AND 4, BLOCK 2

# C.H.K. ESTATES

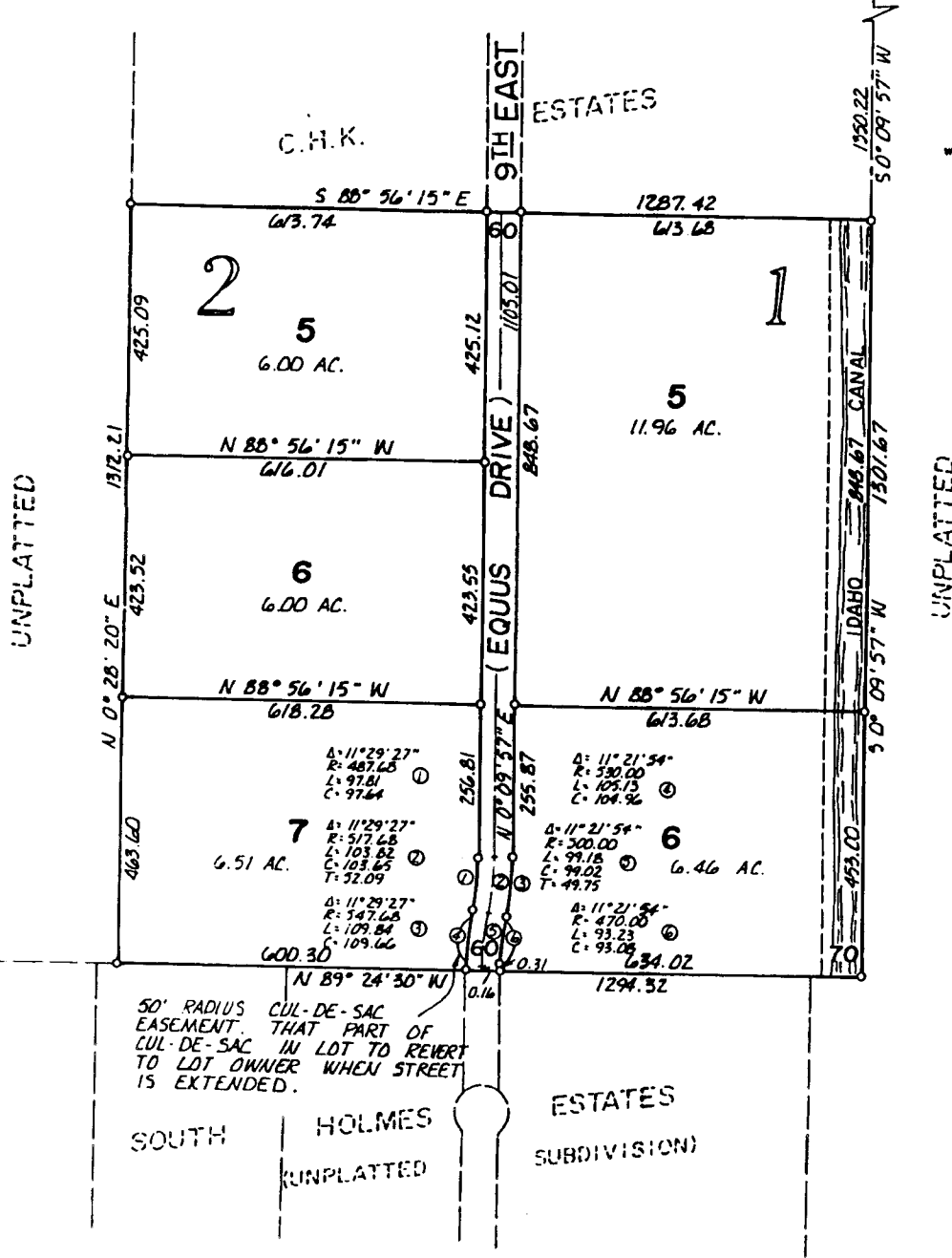
BONNEVILLE COUNTY, IDAHO  
 PART OF THE N.W. 1/4, SECTION 5, T.1N., R.38 E.B.M.

First American Title Company  
 Idaho Falls, Idaho 83404

This sketch is made solely for the purpose of assisting in locating the premises. The company assumes no liability for alleged loss or damage which may result from reliance on this map.



N.W. CORNER SECTION 5 T.1N., R.38 E.B.M.      N.1/4 CORNER SECTION 5 T.1N., R.38 E.B.M.



UNPLATTED

### NOTES

- Indicates a 1/2" x 24" iron rod with a yellow plastic cap marked L.S. 760.
- Utility easements are 8' thru each lot unless otherwise shown.
- A 10' wide utility easement is reserved along the street side of all lots.
- Bonneville County will not maintain roads until constructed to a standard approved and accepted by the County Commissioners.