

1020 Lincoln Road  
 Idaho Falls, Idaho 83401 (208) 524-8175

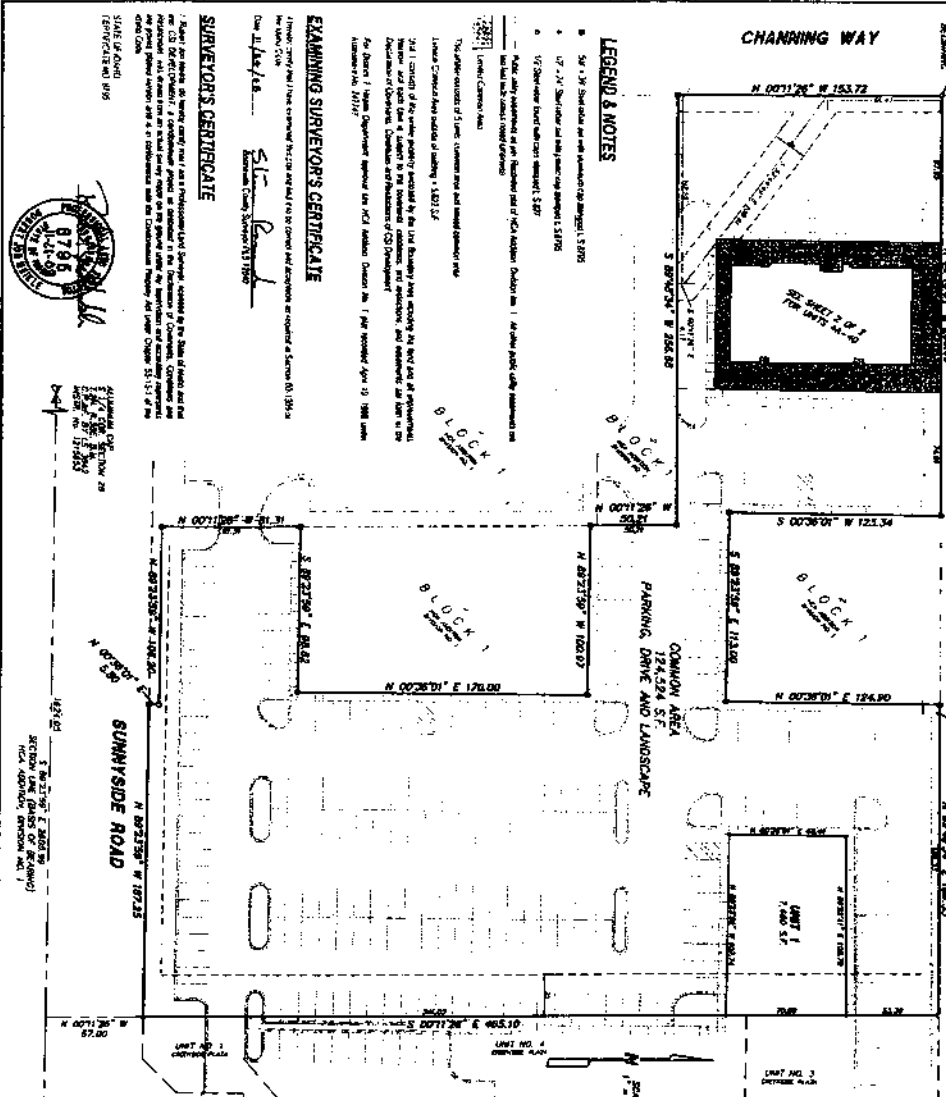
**RECORDER'S CERTIFICATE**  
 I hereby certify that the foregoing is a true and correct copy of the original as recorded in the office of the County Recorder, Idaho Falls, Idaho, on this 27th day of February, 2009. The fee for recording this instrument was \$155.25. The fee for this certificate is \$2.250.  
 County Recorder  
 Idaho Falls, Idaho

*Robert J. ...*

**PLATANT TO DAHO CODE TITLE 58, CHAPTER 8  
 CITY OF IDAHO FALLS, BONNEVILLE COUNTY, IDAHO  
 REVISOR'S CERTIFICATE**  
 I have examined the plat of the above described property, and find that the same is in accordance with the provisions of the laws of the State of Idaho relating to the recording of such plats, and that the same is a true and correct copy of the original as recorded in the office of the County Recorder, Idaho Falls, Idaho, on this 27th day of February, 2009.  
 City Recorder  
 Idaho Falls, Idaho

*Mark Hanna ...*

**CSI DEVELOPMENT PHASE I**



**LEGEND & NOTES**

1. 5/17/07 2nd Edition of the American Surveying & Mapping (ASM) 1:5000
2. 1/7/07 3rd Edition of the American Surveying & Mapping (ASM) 1:5000
3. 1/1/07 4th Edition of the American Surveying & Mapping (ASM) 1:5000
4. 1/1/07 5th Edition of the American Surveying & Mapping (ASM) 1:5000

Note: Any adjustment of an instrument shall be made in accordance with the provisions of the laws of the State of Idaho relating to the recording of such plats, and that the same is a true and correct copy of the original as recorded in the office of the County Recorder, Idaho Falls, Idaho, on this 27th day of February, 2009.

**EXAMINING SUPERVISOR'S CERTIFICATE**  
 I have examined the foregoing plat and find that the same is in accordance with the provisions of the laws of the State of Idaho relating to the recording of such plats, and that the same is a true and correct copy of the original as recorded in the office of the County Recorder, Idaho Falls, Idaho, on this 27th day of February, 2009.  
 Examining Supervisor  
 Idaho Falls, Idaho

**SURVEYOR'S CERTIFICATE**  
 I, the undersigned, do hereby certify that I am a Professional Land Surveyor, licensed by the State of Idaho and that I have personally supervised the surveying and mapping of the above described property, and that the same is a true and correct copy of the original as recorded in the office of the County Recorder, Idaho Falls, Idaho, on this 27th day of February, 2009.  
 Surveyor  
 Idaho Falls, Idaho



**ACKNOWLEDGMENT**

STATE OF IDAHO  
 County of Bonneville  
 I, the undersigned, do hereby certify that I am a Professional Land Surveyor, licensed by the State of Idaho and that I have personally supervised the surveying and mapping of the above described property, and that the same is a true and correct copy of the original as recorded in the office of the County Recorder, Idaho Falls, Idaho, on this 27th day of February, 2009.  
 Surveyor  
 Idaho Falls, Idaho

**OWNER'S DEDICATION**

I, the undersigned, do hereby certify that I am the owner of the above described property, and that I have dedicated the same to the public use of the City of Idaho Falls, Bonneville County, Idaho, for the use of the public as a parking area and landscape area. This dedication is made in accordance with the provisions of the laws of the State of Idaho relating to the recording of such plats, and that the same is a true and correct copy of the original as recorded in the office of the County Recorder, Idaho Falls, Idaho, on this 27th day of February, 2009.  
 Owner  
 Idaho Falls, Idaho

**ACKNOWLEDGMENT**

I, the undersigned, do hereby certify that I am the owner of the above described property, and that I have dedicated the same to the public use of the City of Idaho Falls, Bonneville County, Idaho, for the use of the public as a parking area and landscape area. This dedication is made in accordance with the provisions of the laws of the State of Idaho relating to the recording of such plats, and that the same is a true and correct copy of the original as recorded in the office of the County Recorder, Idaho Falls, Idaho, on this 27th day of February, 2009.  
 Owner  
 Idaho Falls, Idaho

**ACKNOWLEDGMENT**

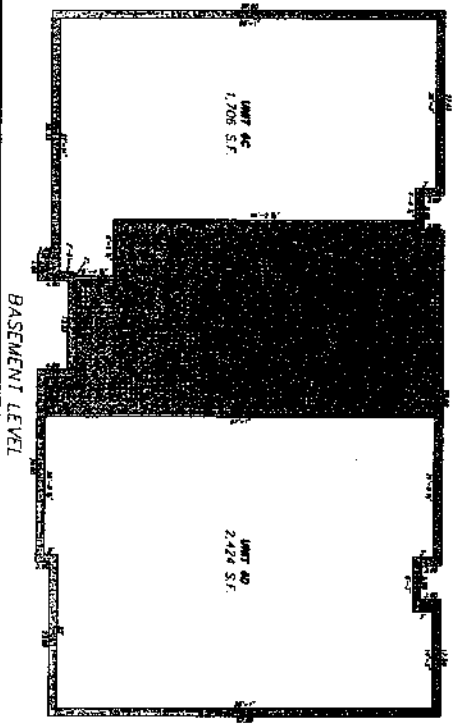
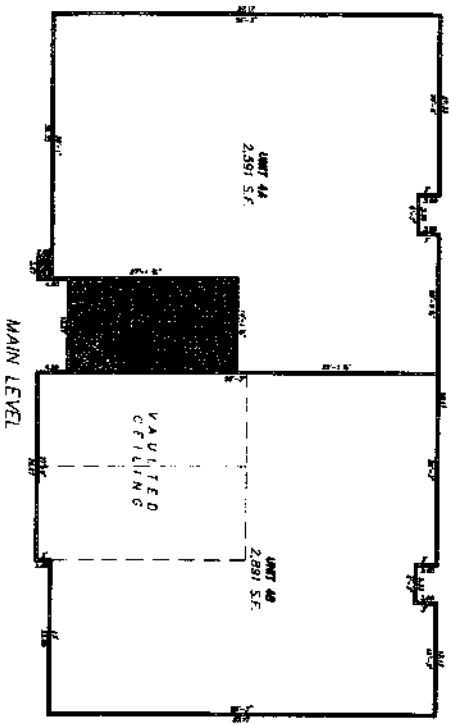
I, the undersigned, do hereby certify that I am the owner of the above described property, and that I have dedicated the same to the public use of the City of Idaho Falls, Bonneville County, Idaho, for the use of the public as a parking area and landscape area. This dedication is made in accordance with the provisions of the laws of the State of Idaho relating to the recording of such plats, and that the same is a true and correct copy of the original as recorded in the office of the County Recorder, Idaho Falls, Idaho, on this 27th day of February, 2009.  
 Owner  
 Idaho Falls, Idaho



SHEET 1 OF 2

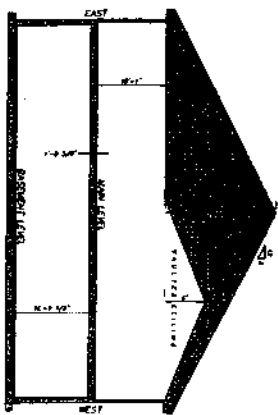
1020 Lincoln Road  
 Idaho Falls, Idaho 83401 (208) 584-6176

**CSI DEVELOPMENT**  
 PURSUANT TO DAHO CODE TITLE 48, CHAPTER 18  
 CITY OF IDAHO FALLS, BONNEVILLE COUNTY, IDAHO



DATE OF PLAN: 1/31/09  
 DRAWN BY: C-256  
 CHECKED BY: T. MILLER  
 PROJECT NUMBER: 1325005  
 SHEET NUMBER: 2 OF 2

NOTE:  
 ALL DIMENSIONS ARE SHOWN  
 UNLESS OTHERWISE NOTED.  
 ALL DIMENSIONS ARE IN FEET AND INCHES.



**REPORTER'S CERTIFICATE**

I, the undersigned, being a duly licensed Professional Engineer in the State of Idaho, do hereby certify that the foregoing development plan for CSI DEVELOPMENT, City of Idaho Falls, Bonneville County, Idaho, was prepared by me or under my direct supervision and that I am a duly licensed Professional Engineer in the State of Idaho.

*[Signature]*

**SUPERVISOR'S CERTIFICATE**

I, the undersigned, being a duly licensed Professional Engineer in the State of Idaho, do hereby certify that the foregoing development plan for CSI DEVELOPMENT, City of Idaho Falls, Bonneville County, Idaho, was prepared by me or under my direct supervision and that I am a duly licensed Professional Engineer in the State of Idaho.

*[Signature]*



**Mountain River**  
 Engineering

SHEET 2 OF 2