

NORTH WEST COR. SEC. 11.  
1/2N. 1/2E. 1/4E. 1/4E. 1/4E.  
C&G N&T # 500748  
N 1/4 COR. SEC. 11  
1/2 N. R. 36 E. 1/4  
C&G N&T # 623003

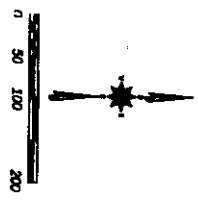
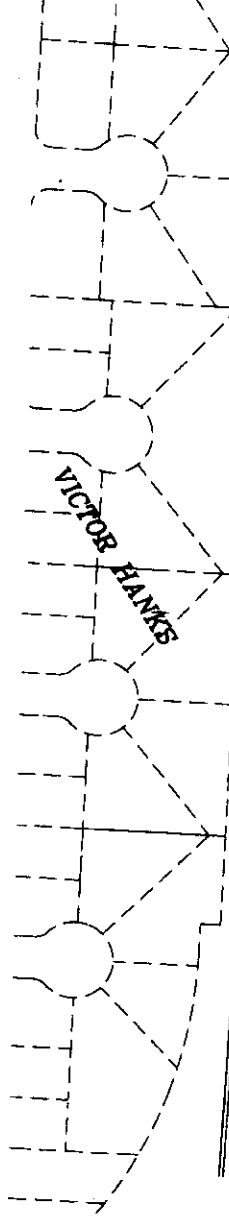
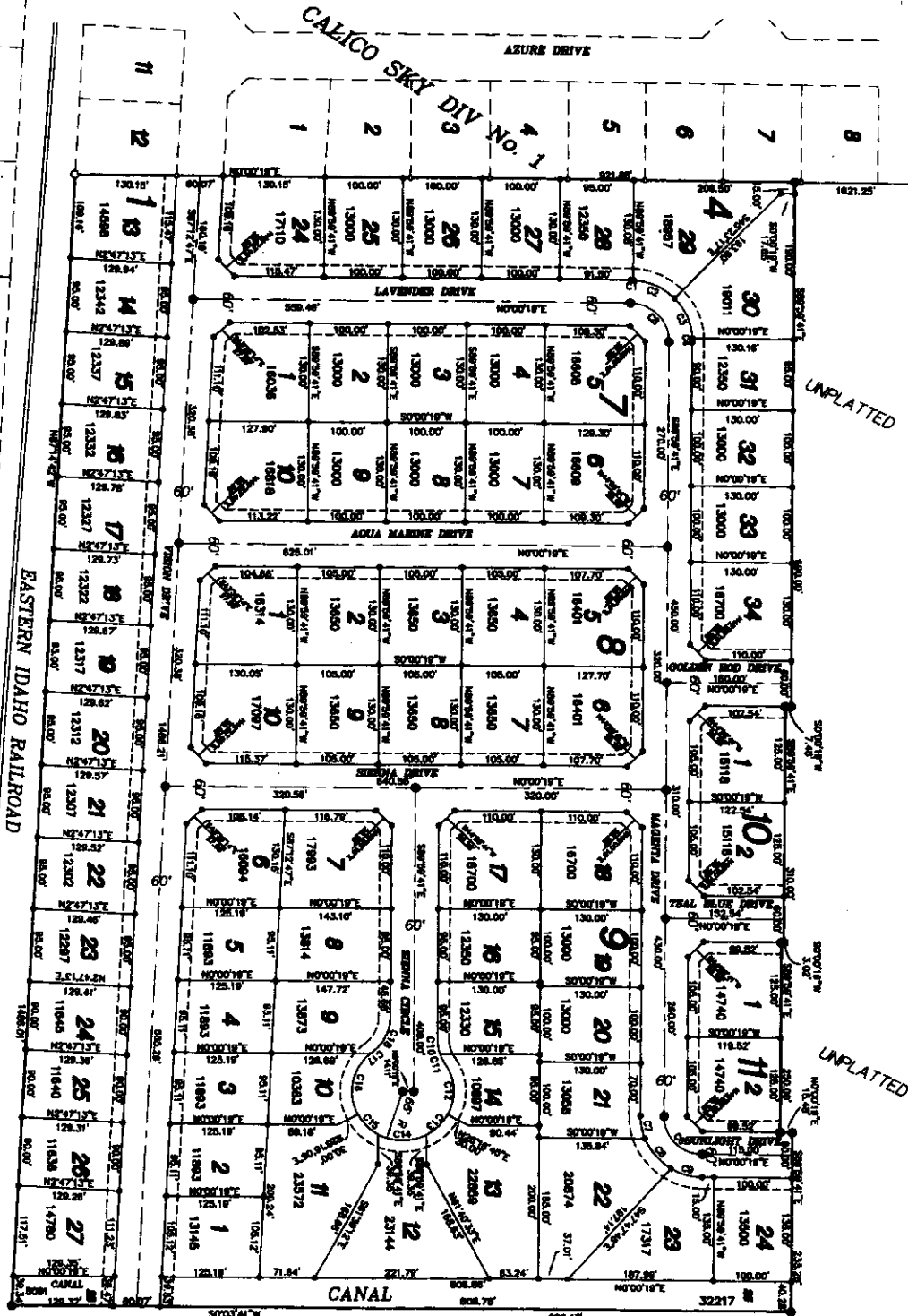
City of Idaho Falls Datum (pre 2004)  
--- Section Lines ---  
--- Basis of Bearing ---

# CALICO SKY SUBDIVISION, DIVISION NO. 3

## BONNEVILLE COUNTY, IDAHO

PART OF THE SOUTH 1/2 OF THE NW 1/4 OF SEC. 11, T. 2 N., R. 36 E. 1/4

First American Title Company  
Idaho Falls, ID 83404  
While this is a photographic  
reproduction of the recorded  
plat, the company assumes  
no liability for variations,  
if any, with a re-survey.



CURVE TABLE

NO.	DELTA	ARC	RADIUS	BEARING	CHORD	CHORD BEARING
1	112.50	112.50	112.50	112.50	112.50	112.50
2	112.50	112.50	112.50	112.50	112.50	112.50
3	112.50	112.50	112.50	112.50	112.50	112.50
4	112.50	112.50	112.50	112.50	112.50	112.50
5	112.50	112.50	112.50	112.50	112.50	112.50
6	112.50	112.50	112.50	112.50	112.50	112.50
7	112.50	112.50	112.50	112.50	112.50	112.50
8	112.50	112.50	112.50	112.50	112.50	112.50
9	112.50	112.50	112.50	112.50	112.50	112.50
10	112.50	112.50	112.50	112.50	112.50	112.50
11	112.50	112.50	112.50	112.50	112.50	112.50
12	112.50	112.50	112.50	112.50	112.50	112.50
13	112.50	112.50	112.50	112.50	112.50	112.50
14	112.50	112.50	112.50	112.50	112.50	112.50
15	112.50	112.50	112.50	112.50	112.50	112.50
16	112.50	112.50	112.50	112.50	112.50	112.50
17	112.50	112.50	112.50	112.50	112.50	112.50
18	112.50	112.50	112.50	112.50	112.50	112.50
19	112.50	112.50	112.50	112.50	112.50	112.50
20	112.50	112.50	112.50	112.50	112.50	112.50
21	112.50	112.50	112.50	112.50	112.50	112.50
22	112.50	112.50	112.50	112.50	112.50	112.50
23	112.50	112.50	112.50	112.50	112.50	112.50
24	112.50	112.50	112.50	112.50	112.50	112.50
25	112.50	112.50	112.50	112.50	112.50	112.50
26	112.50	112.50	112.50	112.50	112.50	112.50
27	112.50	112.50	112.50	112.50	112.50	112.50
28	112.50	112.50	112.50	112.50	112.50	112.50
29	112.50	112.50	112.50	112.50	112.50	112.50
30	112.50	112.50	112.50	112.50	112.50	112.50
31	112.50	112.50	112.50	112.50	112.50	112.50
32	112.50	112.50	112.50	112.50	112.50	112.50
33	112.50	112.50	112.50	112.50	112.50	112.50
34	112.50	112.50	112.50	112.50	112.50	112.50

NOTES

- 1. All dimensions are in feet and inches.
- 2. All bearings are in degrees, minutes and seconds.
- 3. All distances are in feet and inches.
- 4. All curves are circular.
- 5. All curves are in the right hand of travel.
- 6. All curves are in the left hand of travel.
- 7. All curves are in the right hand of travel.
- 8. All curves are in the left hand of travel.
- 9. All curves are in the right hand of travel.
- 10. All curves are in the left hand of travel.
- 11. All curves are in the right hand of travel.
- 12. All curves are in the left hand of travel.
- 13. All curves are in the right hand of travel.
- 14. All curves are in the left hand of travel.
- 15. All curves are in the right hand of travel.
- 16. All curves are in the left hand of travel.
- 17. All curves are in the right hand of travel.
- 18. All curves are in the left hand of travel.
- 19. All curves are in the right hand of travel.
- 20. All curves are in the left hand of travel.
- 21. All curves are in the right hand of travel.
- 22. All curves are in the left hand of travel.
- 23. All curves are in the right hand of travel.
- 24. All curves are in the left hand of travel.
- 25. All curves are in the right hand of travel.
- 26. All curves are in the left hand of travel.
- 27. All curves are in the right hand of travel.
- 28. All curves are in the left hand of travel.
- 29. All curves are in the right hand of travel.
- 30. All curves are in the left hand of travel.
- 31. All curves are in the right hand of travel.
- 32. All curves are in the left hand of travel.
- 33. All curves are in the right hand of travel.
- 34. All curves are in the left hand of travel.