

CALICO SKY SUBDIVISION, DIVISION NO. 4

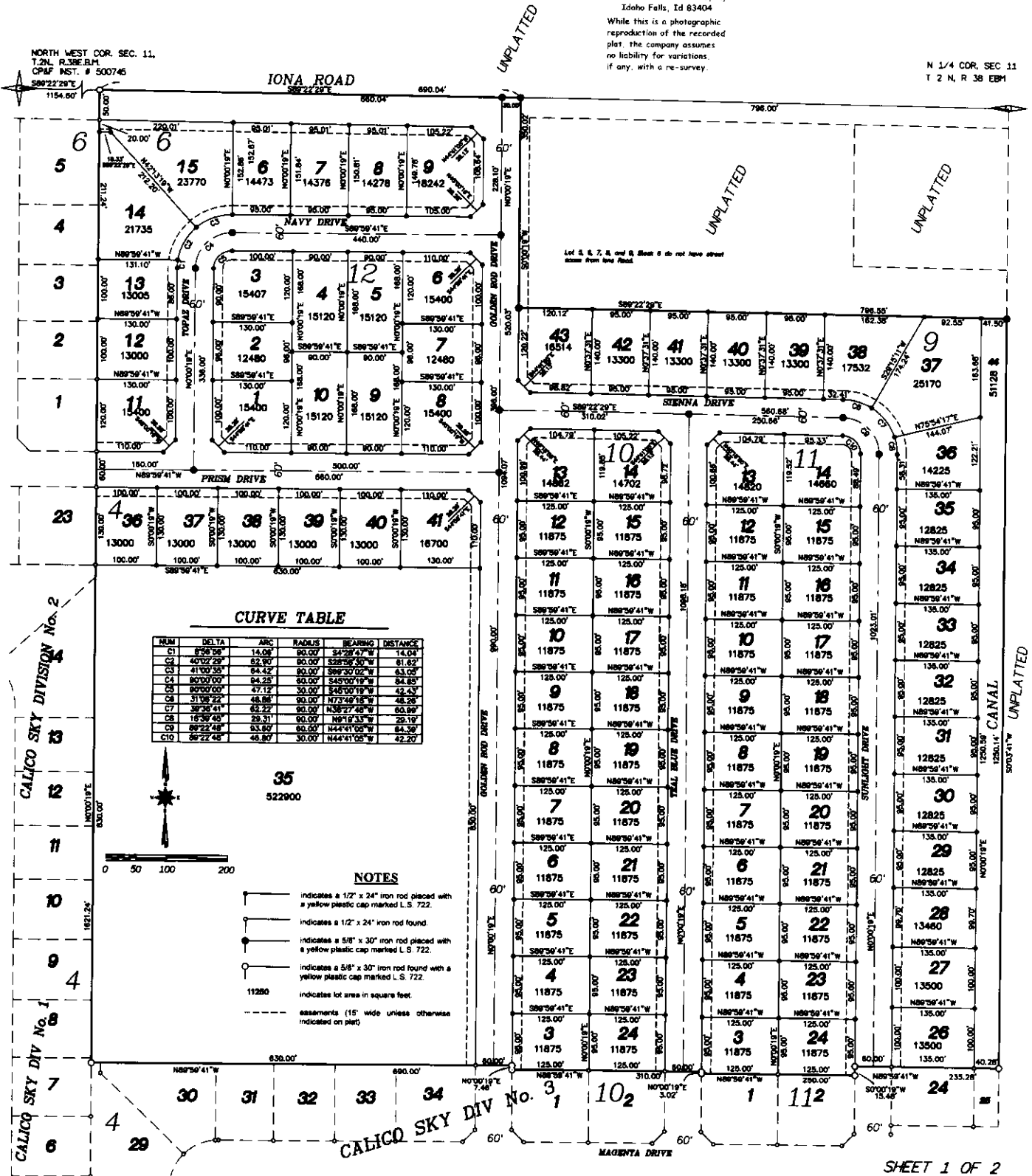
BONNEVILLE COUNTY, IDAHO
PART OF THE EAST 1/2 OF THE NW 1/4 OF SEC. 11, T. 2 N, R. 38 EBM

First American Title Company
Idaho Falls, Id 83404

While this is a photographic reproduction of the recorded plat, the company assumes no liability for variations, if any, with a re-survey.

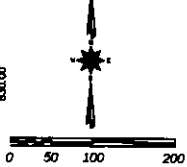
N 1/4 COR, SEC 11
T 2 N, R 38 EBM

NORTH WEST COR. SEC. 11,
T.2N, R.38E, B.M.
CP&F INST. # 500746



CURVE TABLE

NUM	DELTA	ARC	RADIUS	BEARING	DISTANCE
C1	8°58'58"	14.06'	90.00'	S42°24'47"W	14.04'
C2	40°02'29"	62.80'	90.00'	S28°56'30"W	61.62'
C3	41°00'35"	64.42'	90.00'	S89°30'02"W	63.03'
C4	80°03'00"	84.25'	90.00'	S45°00'19"W	84.83'
C5	80°03'00"	47.12'	30.00'	S45°00'19"W	47.43'
C6	31°58'22"	48.86'	90.00'	N73°49'16"W	48.26'
C7	39°36'41"	62.22'	90.00'	N38°27'48"W	60.89'
C8	18°39'48"	29.31'	90.00'	N81°16'33"W	29.19'
C9	89°22'48"	63.89'	90.00'	S44°41'05"W	64.39'
C10	89°22'48"	48.89'	30.00'	S44°41'05"W	49.29'



NOTES

- indicates a 1/2" x 24" iron rod placed with a yellow plastic cap marked L.S. 722.
- indicates a 1/2" x 24" iron rod found.
- indicates a 5/8" x 30" iron rod placed with a yellow plastic cap marked L.S. 722.
- indicates a 5/8" x 30" iron rod found with a yellow plastic cap marked L.S. 722.
- 11280 indicates lot area in square feet.
- easements (15' wide unless otherwise indicated on plat).