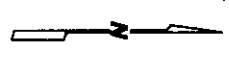
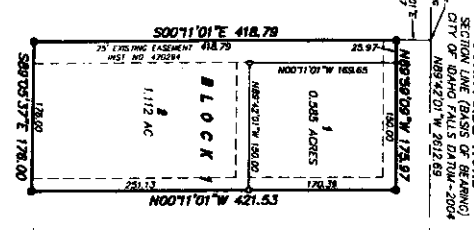
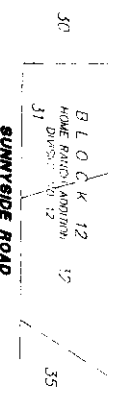


**CALL ADDITION**  
**DIVISION NO. 1**  
**AN ADDITION TO THE CITY OF IDAHO FALLS,**  
**BONNEVILLE COUNTY, IDAHO**  
**N THE NE 1/4 OF SECTION 31 T2N R39E B1M.**

BRASS CAP  
 N 1/4 COR SECTION 31  
 T2N R39E B1M  
 C&P BY L.S. 873  
 INSTR. No. 502079

ALUMINUM CAP  
 N 1/4 COR SECTION 31  
 T2N R39E B1M  
 C&P BY L.S. 1642  
 INSTR. No. 1009868



**LEGEND & NOTES**

- 3/8" x 30" Brass nail set with plastic cap stamped L.S. 8735
- 1/2" x 24" Steel nail set with plastic cap stamped L.S. 8735
- 1/2" Steel nail found with cap stamped L.S. 8735
- A fence box with Public Utility Easement is hereby granted/reserved along all road frontages within each lot. All other public utility easements are shown here unless noted otherwise.
- This station contains 7 1/8" (1.88 1/2") average lot size.

First American Title Company  
 Idaho Falls, ID 83404  
 While this is a photographic  
 reproduction of the recorded  
 plat, the company assumes  
 no liability for variations,  
 if any, with a re-survey.