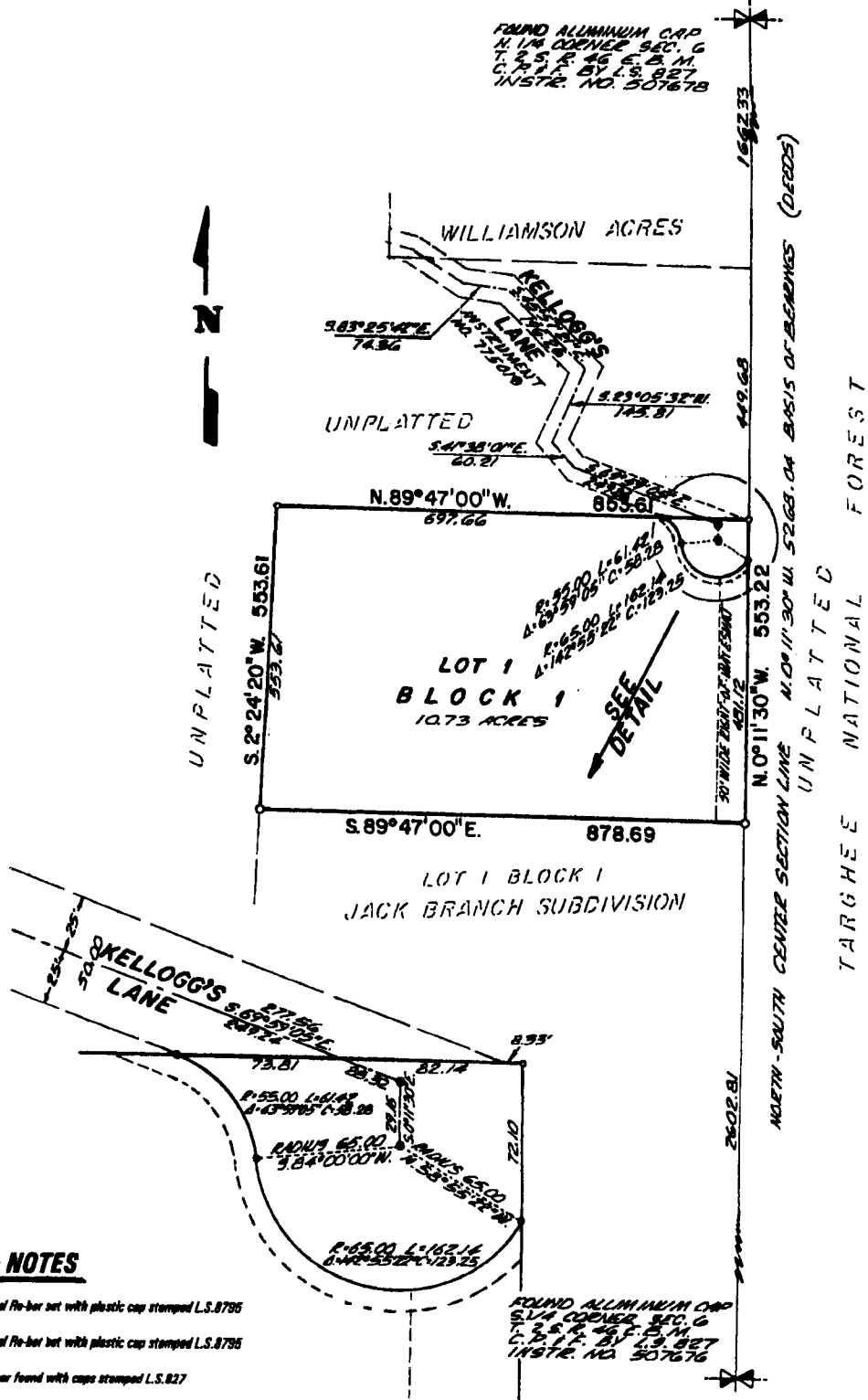


CALLAGHAN'S CLIMB

BONNEVILLE COUNTY, IDAHO

PART OF THE E. 1/2 E. 1/2 SEC. 6 T. 2 S. R. 46 E. B.M.



LEGEND & NOTES

- 5/8" x 30" Steel Re-bar set with plastic cap stamped L.S.8795
- 1/2" x 24" Steel Re-bar set with plastic cap stamped L.S.8795
- 1/2" Steel Re-bar found with caps stamped L.S.827
- 5/8" Steel Re-bar found with caps stamped L.S.4883

----- A ten foot wide Utility Easement is hereby granted along all road frontage within the lot. All other easements are ten foot wide unless otherwise noted.

The County will not maintain roads until constructed to County standards and officially accepted.

First American Title Company

Idaho Falls, Idaho 83404

This sketch is made solely for the purpose of assisting in locating the premises. The company assumes no liability for alleged loss or damage which may result from reliance on this map.

