

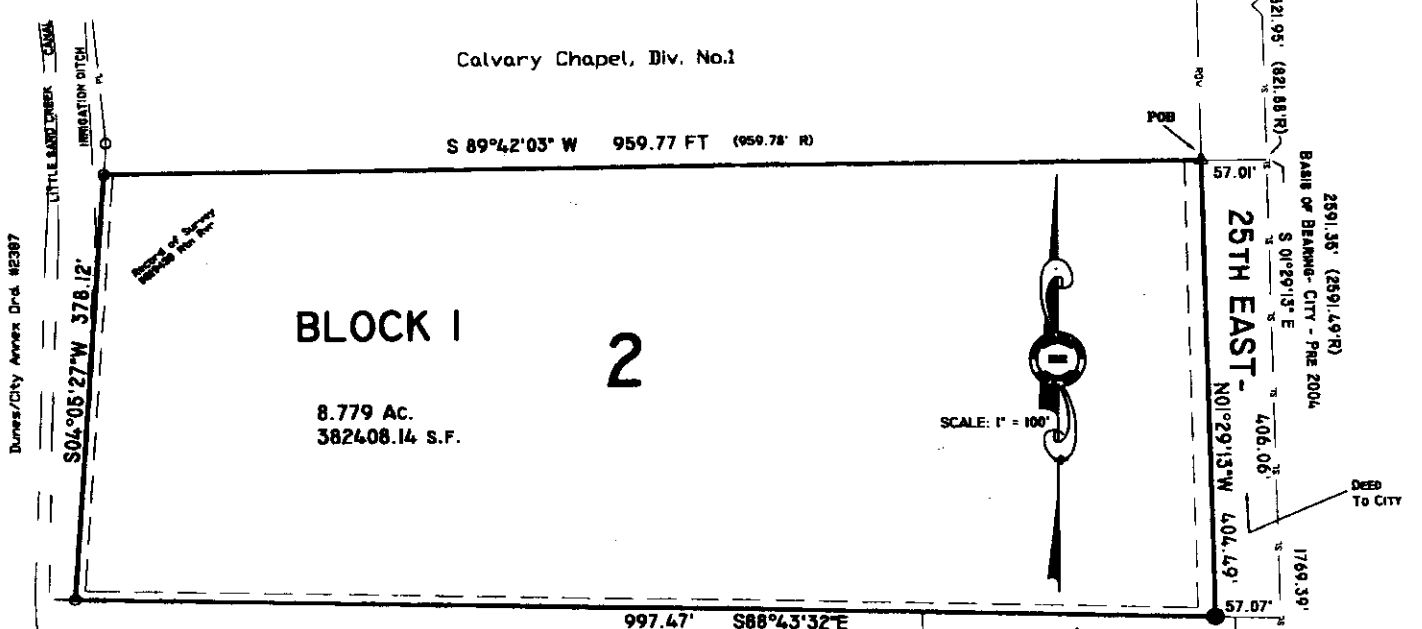
CALVARY CHAPEL DIVISION NO. 2

AN ADDITION TO THE CITY OF IDAHO FALLS, BONNEVILLE COUNTY, IDAHO





BEING PART OF THE SE1/4, SECTION 33, T2N, R38E, B.M.

First American Title Company
Idaho Falls, Id 83404

While this is a photographic
reproduction of the recorded
plat, the company assumes
no liability for variations,
if any, with a re-survey.



LEGEND

-  SECTION CORNER CONTROL
 -  PLACED 5/8" IRON ROD WITH SURV-CAP MARKED P.L.S. 3842
 -  MONUMENTS FOUND 1/2" REBAR W/PLASTIC CAP- (# ILLEGIBLE) LS 827
 -  MONUMENTS FOUND 5/8" REBAR W/AL-CAP- PLS 3842
- UTILITY EASEMENTS ARE 15' WIDE ALONG THE FRONTAGE OF ALL LOTS. SIDE AND REAR YARD EASEMENTS ARE 8' UNLESS OTHERWISE SHOWN.
- POB POINT OF BEGINNING

Sand Creek Subdivision No 1

unplatted

33 34
CITY BRASS CAP
CP&F - L.S. 975
#199924

821.95' (821.95'R)

POB

2591.35' (2591.49'R)

BASE OF BEARINGS - CITY - PRE 2004

S 0°29'13"E

406.00'

25TH EAST -
NO 29'13"W

404.49'

DEED
To City

1769.39' (1769.64'R)

33 34
CITY BRASS CAP
CP&F - L.S. 975
#578953

SCALE: 1" = 100'

Dunes/City Annex Dnd #2387

LITTLE SAND CREEK
IRRIGATION DITCH

S 04°05'27"W 378.12'

SEE P.L.S. 3842
FOR SURV-CAP

BLOCK 1
2
8.779 Ac.
382608.14 S.F.

Calvary Chapel, Div. No.1
S 89°42'03" W 959.77 FT (959.78' R)

997.47' S88°43'32"E