

CAMBRIDGE TERRACE PARK ADDI

DIVISION NO. 1

TO THE CITY OF IDAHO FALLS, IDAHO
Part of the NW 1/4 Sec. 24, T.2N., R.37E.B.M.

DAVID E. BENTON & ASSOCIATES
CONSULTING ENGINEER'S

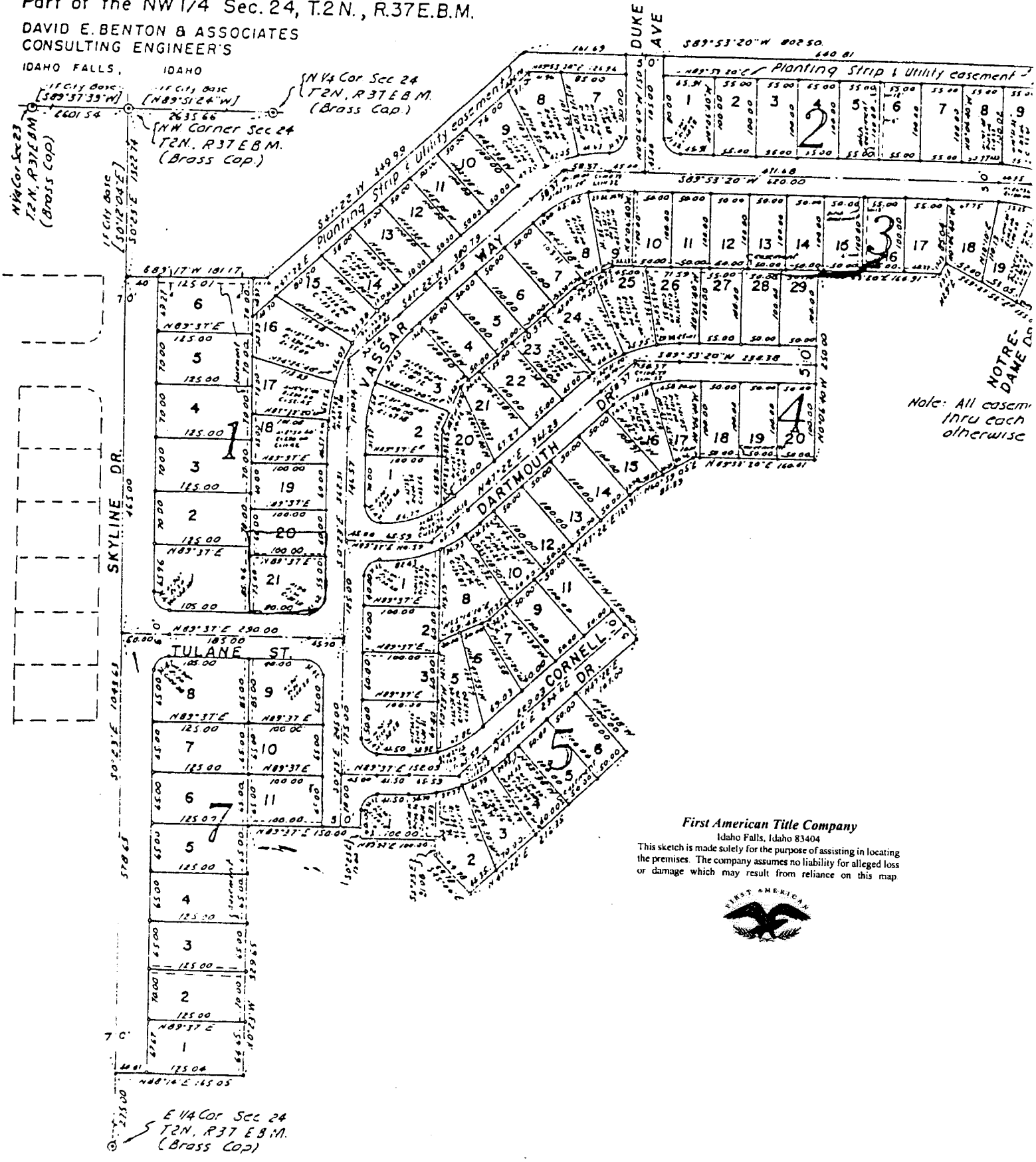
IDAHO FALLS, IDAHO

IDAHO

N 1/4 Cor Sec 24
T.2N., R.37E.B.M.
(Brass Cap.)

NW Corner Sec 24
T.2N., R.37E.B.M.
(Brass Cap.)

N 1/4 Cor Sec 23
T.2N., R.37E.B.M.
(Brass Cap.)



First American Title Company

Idaho Falls, Idaho 83404

This sketch is made solely for the purpose of assisting in locating the premises. The company assumes no liability for alleged loss or damage which may result from reliance on this map



E 1/4 Cor Sec 24
T.2N., R.37E.B.M.
(Brass Cap.)