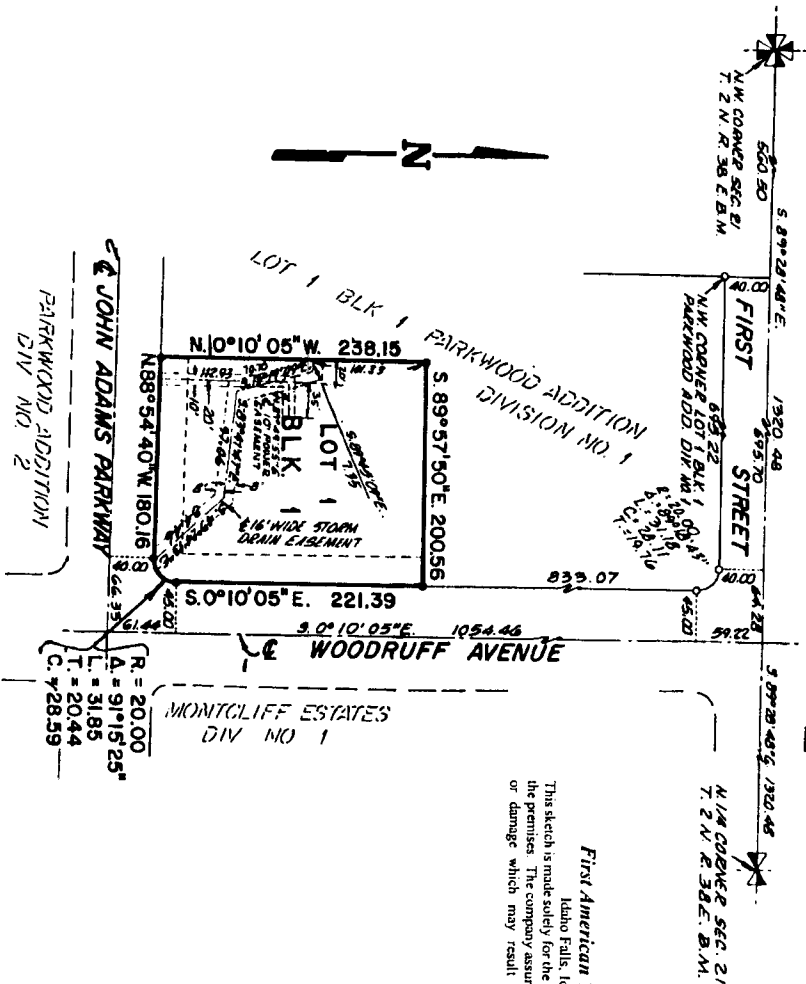


CAMDEN SQUARE ADDITION DIVISION NO. 1

BEING A REPLAT OF A PART OF LOT 1, BLOCK 1, PARKWOOD ADDITION, DIVISION NO. 1
CITY OF IDAHO FALLS, BONNEVILLE COUNTY, IDAHO
LYING IN THE N.W. 1/4 N.W. 1/4 SECTION 21 T. 2 N. R. 38 E. B.M.



First American Title Company
Idaho Falls, Idaho 83404
This sketch is made solely for the purpose of assisting in locating the premises. The company assumes no liability for alleged loss or damage which may result from reliance on this map.



NOTES

- DENOTES IRON RODS
- UTILITY EASEMENTS ARE 25-FOOT WIDE
- ROAD STREET FRONTAGES
- ALL DIMENSIONS ARE AS SHOWN