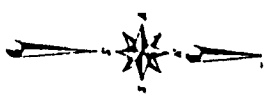


DEAN DEWITT DEWITT DEWITT

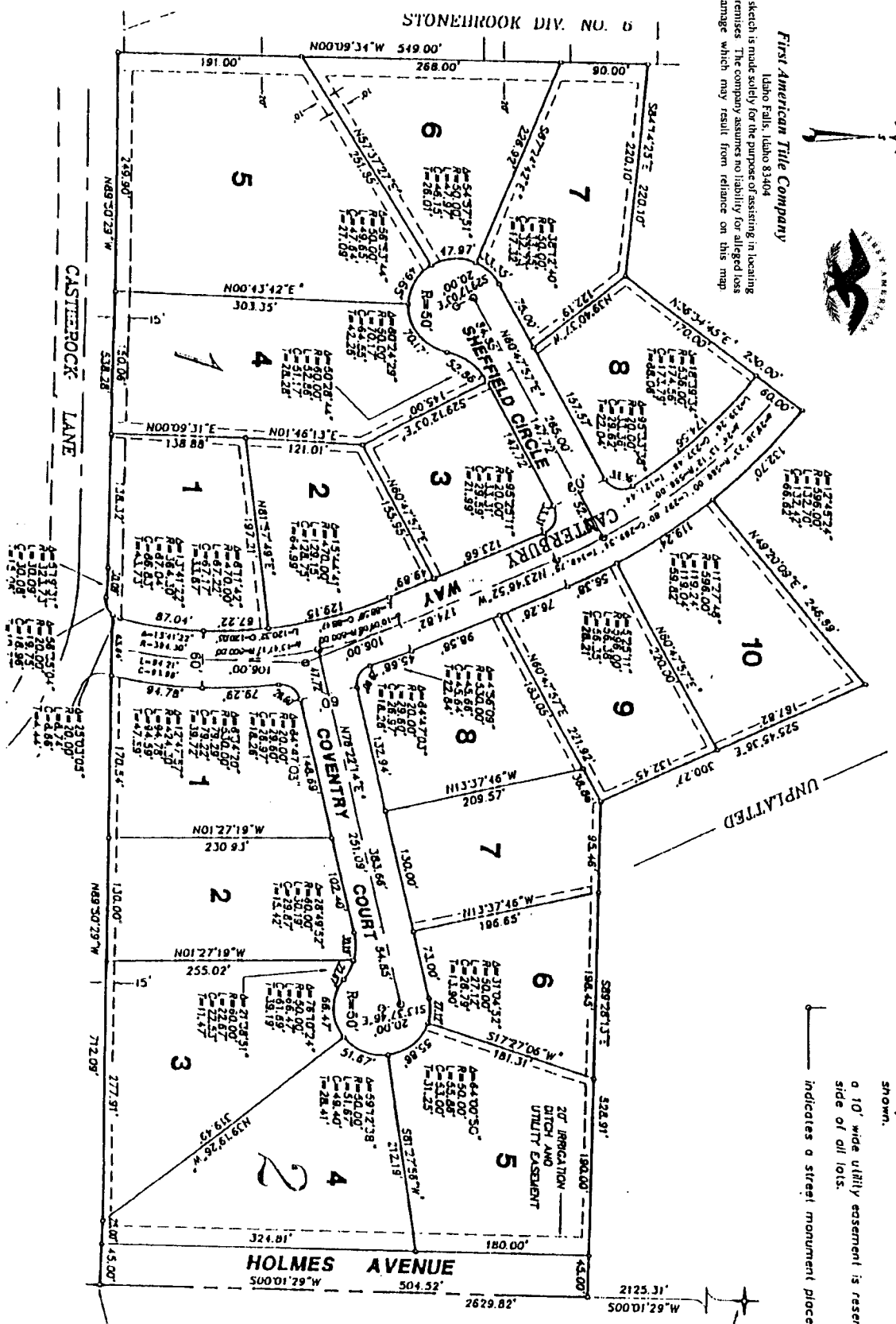
TO THE CITY OF IDAHO FALLS, IDAHO
PART OF THE NE 1/4 OF SECTION 31, T. 2 N., R. 38 E.B.M.

NOTES

- indicates a 1/2" x 24" iron rod placed with a yellow plastic cap marked L.S. 760.
- utility easements are shown thru each lot unless otherwise shown.
- a 10' wide utility easement is reserved along the street side of all lots.
- indicates a street monument placed after construction.



First American Title Company
Idaho Falls, Idaho 83404
This sketch is made solely for the purpose of assisting in locating the premises. The company assumes no liability for alleged loss or damage which may result from reliance on this map.



EAST 1/4 COR. SEC. 31,
T. 2 N., R. 38 E.B.M.

N.E. COR. SEC. 31,
T. 2 N., R. 38 E.B.M.
(CITY MONUMENT)