

CANYON CREEK ESTATES

DIVISION NO 2

BONNEVILLE COUNTY, IDAHO
 PART OF THE S 1/2 OF SEC. 17, T2N, R37E, B.M.
 DAVID BENSON ASSOCIATES - CONSULTING ENGINEERS
 IDAHO FALLS, IDAHO

E 1/4 COR. SEC. 17
 T2N, R37E, B.M.
 (City Monument)

W 1/4 COR. SEC. 17
 T2N, R37E, B.M.

UNPLATTED

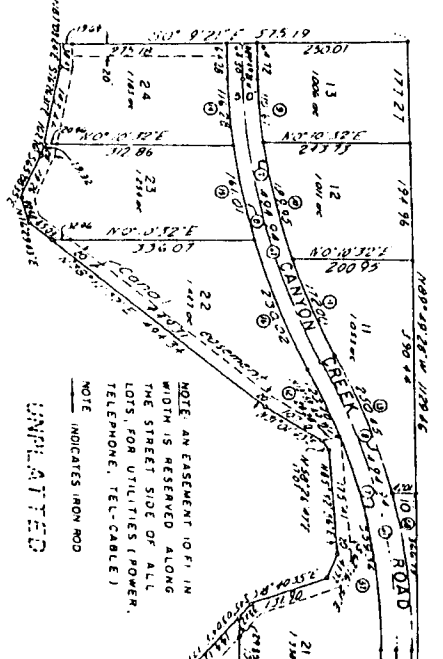


First American Title Company
 Idaho Falls, Idaho 83404
 This sketch is made solely for the purpose of assisting in locating the premises. The company assumes no liability for alleged loss or damage which may result from reliance on this map.

NO.	A	B	CURVE DATA
1	100.00	100.00	90°
2	150.00	150.00	90°
3	200.00	200.00	90°
4	250.00	250.00	90°
5	300.00	300.00	90°
6	350.00	350.00	90°
7	400.00	400.00	90°
8	450.00	450.00	90°
9	500.00	500.00	90°
10	550.00	550.00	90°
11	600.00	600.00	90°
12	650.00	650.00	90°
13	700.00	700.00	90°
14	750.00	750.00	90°
15	800.00	800.00	90°
16	850.00	850.00	90°
17	900.00	900.00	90°
18	950.00	950.00	90°
19	1000.00	1000.00	90°
20	1050.00	1050.00	90°
21	1100.00	1100.00	90°
22	1150.00	1150.00	90°
23	1200.00	1200.00	90°
24	1250.00	1250.00	90°
25	1300.00	1300.00	90°
26	1350.00	1350.00	90°
27	1400.00	1400.00	90°
28	1450.00	1450.00	90°
29	1500.00	1500.00	90°
30	1550.00	1550.00	90°
31	1600.00	1600.00	90°
32	1650.00	1650.00	90°
33	1700.00	1700.00	90°
34	1750.00	1750.00	90°
35	1800.00	1800.00	90°
36	1850.00	1850.00	90°
37	1900.00	1900.00	90°
38	1950.00	1950.00	90°
39	2000.00	2000.00	90°
40	2050.00	2050.00	90°
41	2100.00	2100.00	90°
42	2150.00	2150.00	90°
43	2200.00	2200.00	90°
44	2250.00	2250.00	90°
45	2300.00	2300.00	90°
46	2350.00	2350.00	90°
47	2400.00	2400.00	90°
48	2450.00	2450.00	90°
49	2500.00	2500.00	90°
50	2550.00	2550.00	90°
51	2600.00	2600.00	90°
52	2650.00	2650.00	90°
53	2700.00	2700.00	90°
54	2750.00	2750.00	90°
55	2800.00	2800.00	90°
56	2850.00	2850.00	90°
57	2900.00	2900.00	90°
58	2950.00	2950.00	90°
59	3000.00	3000.00	90°
60	3050.00	3050.00	90°
61	3100.00	3100.00	90°
62	3150.00	3150.00	90°
63	3200.00	3200.00	90°
64	3250.00	3250.00	90°
65	3300.00	3300.00	90°
66	3350.00	3350.00	90°
67	3400.00	3400.00	90°
68	3450.00	3450.00	90°
69	3500.00	3500.00	90°
70	3550.00	3550.00	90°
71	3600.00	3600.00	90°
72	3650.00	3650.00	90°
73	3700.00	3700.00	90°
74	3750.00	3750.00	90°
75	3800.00	3800.00	90°
76	3850.00	3850.00	90°
77	3900.00	3900.00	90°
78	3950.00	3950.00	90°
79	4000.00	4000.00	90°
80	4050.00	4050.00	90°
81	4100.00	4100.00	90°
82	4150.00	4150.00	90°
83	4200.00	4200.00	90°
84	4250.00	4250.00	90°
85	4300.00	4300.00	90°
86	4350.00	4350.00	90°
87	4400.00	4400.00	90°
88	4450.00	4450.00	90°
89	4500.00	4500.00	90°
90	4550.00	4550.00	90°
91	4600.00	4600.00	90°
92	4650.00	4650.00	90°
93	4700.00	4700.00	90°
94	4750.00	4750.00	90°
95	4800.00	4800.00	90°
96	4850.00	4850.00	90°
97	4900.00	4900.00	90°
98	4950.00	4950.00	90°
99	5000.00	5000.00	90°
100	5050.00	5050.00	90°

UNPLATTED

UNPLATTED



S.W. COR. SEC. 17
 T2N, R37E, B.M.

S.E. COR. SEC. 17
 T2N, R37E, B.M.
 (City Monument)

