








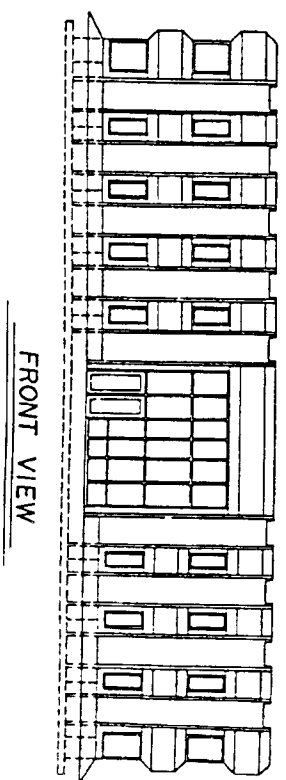
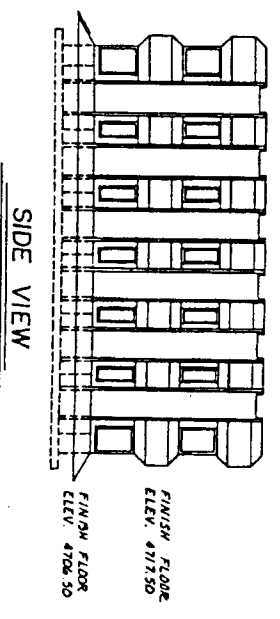
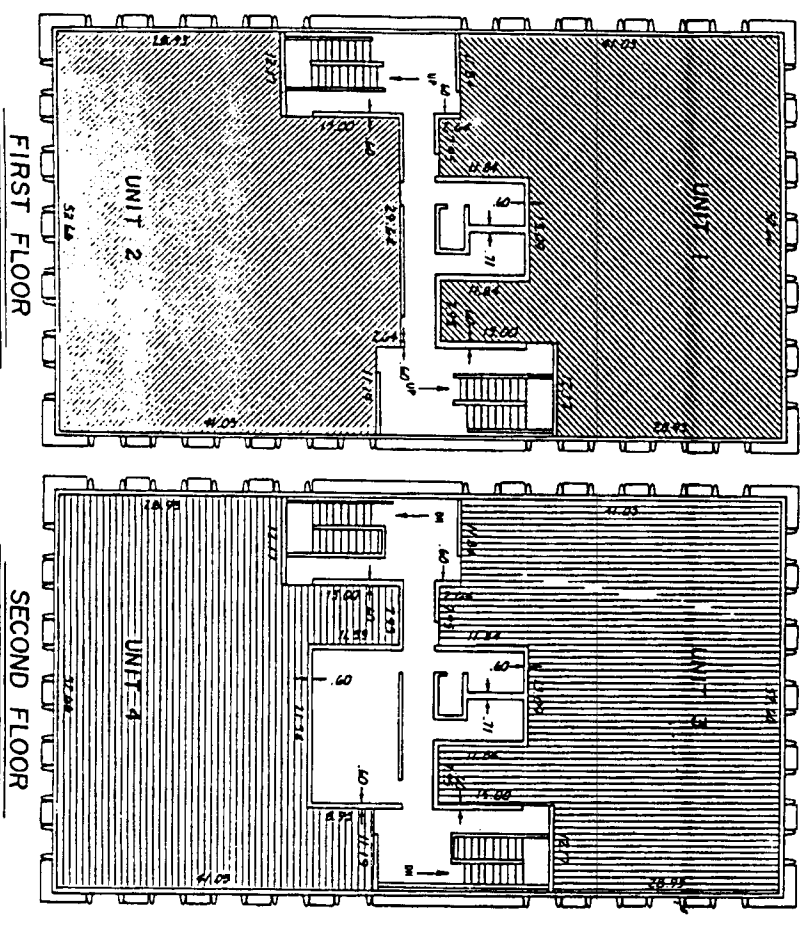
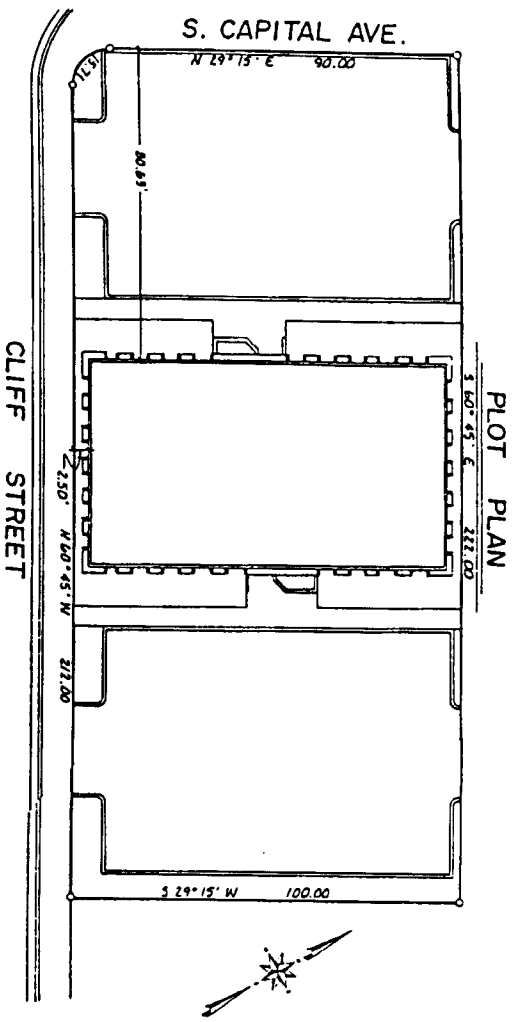


EXHIBIT 'A'  
**CAPITAL PLAZA**  
**CONDOMINIUM**  
 AN IDAHO CONDOMINIUM PROJECT  
 LOCATED IN LOTS 17 THRU 25, BLOCK 2  
 OF THE ORIGINAL TOWNSITE OF IDAHO FALLS, IDAHO

SHEET 1 OF 2

LEGEND

-  UNIT 1
-  UNIT 2
-  UNIT 3
-  UNIT 4
-  UNIT 5
-  LIMITED COMMON AREA FOR UNITS 3 AND 4.
-  COMMON AREAS, ALL STAIRWAYS AND  
AND PARKING AREAS ARE INCLUDED.
-  ALL INTERIOR WALLS ARE 6" NO. THREE  
UNLESS OTHERWISE SHOWN.
-  ALL EXTERIOR WALLS ARE 8" NO. THREE.



**First American Tile Company**  
 Idaho Falls, Idaho 83404  
 This sketch is made solely for the purpose of assisting in locating the premises. The company assumes no liability for alleged loss or damage which may result from reliance on this map.



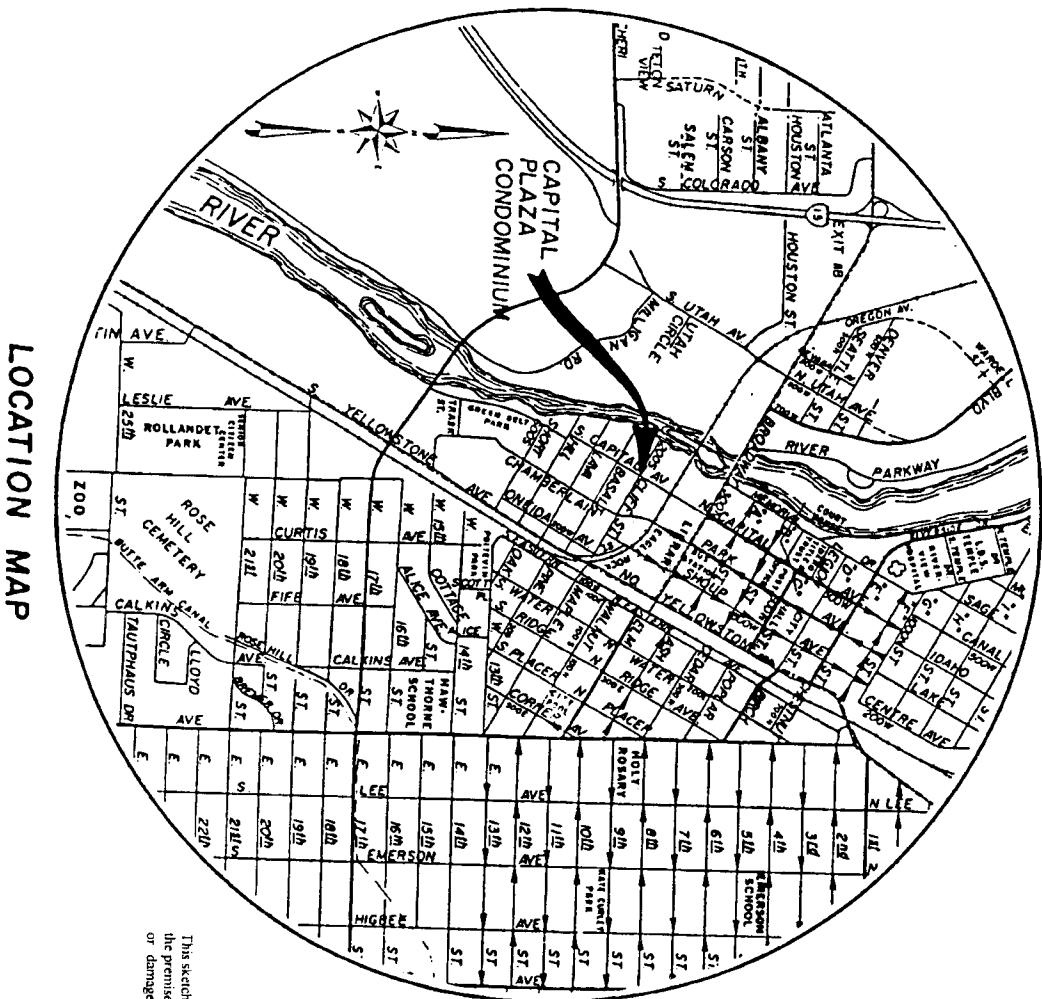
# EXHIBIT "A" CAPITAL PLAZA CONDOMINIUM

AN IDAHO CONDOMINIUM PROJECT

LOCATED IN LOTS 17 THRU 25, BLOCK 2

OF THE ORIGINAL TOWNSITE OF IDAHO FALLS, IDAHO

SHEET 2 OF 2



LOCATION MAP

This sketch is made solely for the purpose of assisting in locating the premises. The company assumes no liability for alleged loss or damage which may result from reliance on this map.

First American Title Company

Idaho Falls, Idaho 83404

