

CARIBOU MEADOW ESTATES

DIVISION NO. 2

BONNEVILLE COUNTY, IDAHO
PART OF THE NW 1/4, SECTION 13, T22 N., R. 38 E., B.M.

First American Title Company

Idaho Falls, Idaho 83404

This sketch is made solely for the purpose of assisting in locating the premises. The company assumes no liability for alleged loss or damage which may result from reliance on this map.



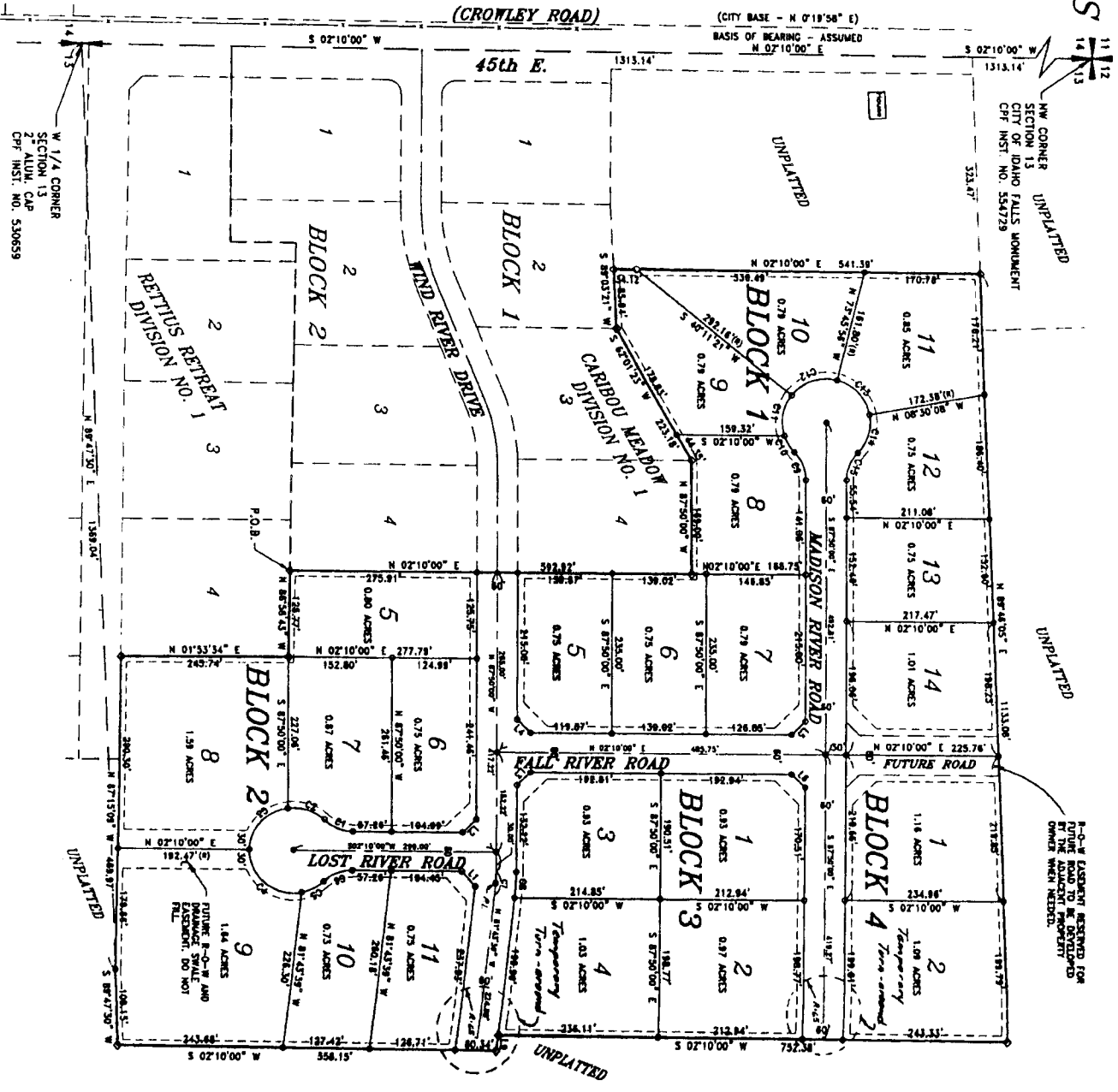
LINE	DIRECTION	DISTANCE
L1	N 87°31'0" E	28.75'
L2	N 47°50'00" W	28.28'
L3	N 47°50'00" W	28.28'
L4	N 47°10'00" E	28.48'
L5	N 47°10'00" E	28.48'
L6	N 47°50'00" W	28.28'
L7	N 47°50'00" W	28.28'
L8	N 47°10'00" E	28.28'
L9	S 87°43'39" E	21.77'

CURVE	MARKS	LENGTH	CHORD	BEARING	DELTA
C1	80.00'	44.02'	N 27°04'22" E	43°58'44"	
C2	85.00'	58.87'	S 20°15'18" W	51°24'05"	
C3	85.00'	58.87'	S 46°42'08" W	62°11'43"	
C4	85.00'	58.87'	S 58°13'52" E	73°28'43"	
C5	85.00'	58.87'	S 18°48'50" E	43°58'44"	
C6	80.00'	44.02'	N 87°48'50" E	68°06'21"	
C7	80.00'	44.02'	S 88°48'50" E	68°06'21"	
C8	80.00'	44.02'	N 87°11'58" W	43°58'44"	
C9	80.00'	44.02'	N 87°01'18" E	28°38'04"	
C10	85.00'	58.87'	N 81°14'18" W	38°22'01"	
C11	85.00'	58.87'	N 77°39'39" W	38°22'01"	
C12	85.00'	58.87'	N 74°53'12" W	48°10'43"	
C13	85.00'	58.87'	S 71°11'42" E	52°38'51"	
C14	80.00'	44.02'	S 87°51'58" E	43°58'44"	

- NOTE:**
1. THE COUNTY WILL NOT MAINTAIN ROADS UNLESS CONSTRUCTED TO COUNTY STANDARDS AND OFFICIALLY ACCEPTED.
 2. PRIVATE DRIVEWAY APPROACHES WILL BE CONSTRUCTED AS SHOWN ON THE APPROVED IMPROVEMENT DRAWINGS ON FILE IN THE OFFICE OF THE COUNTY ENGINEER AND DRAINAGE STAKES SHALL BE MAINTAINED.
 3. LOTS SHOWN ON THIS PLAN ARE INCLUDED IN A LIGHTING PERMIT AND WILL BE ASSESSED FOR THE CREATION AND MAINTENANCE COSTS.

LEGEND

- Section control corners
- Point 1/2" iron rod with cap marked P.L.S. 4563
- Lottery assessments are 1/2" rods along the frontage of all lots. Side yard and rear yard assessments are 3/16" diameter iron rods.
- Point 1/2" iron rod with cap marked P.L.S. 4562
- Point 5/16" iron rod with cap marked P.L.S. 4561
- P.O.B. Point of beginning



NW CORNER UNPLATTED
SECTION 13
CITY OF IDAHO FALLS MONUMENT
C.P.F. INST. NO. 554729

W 1/4 CORNER
SECTION 13
2ND ALDUI. CAP
C.P.F. INST. NO. 530659