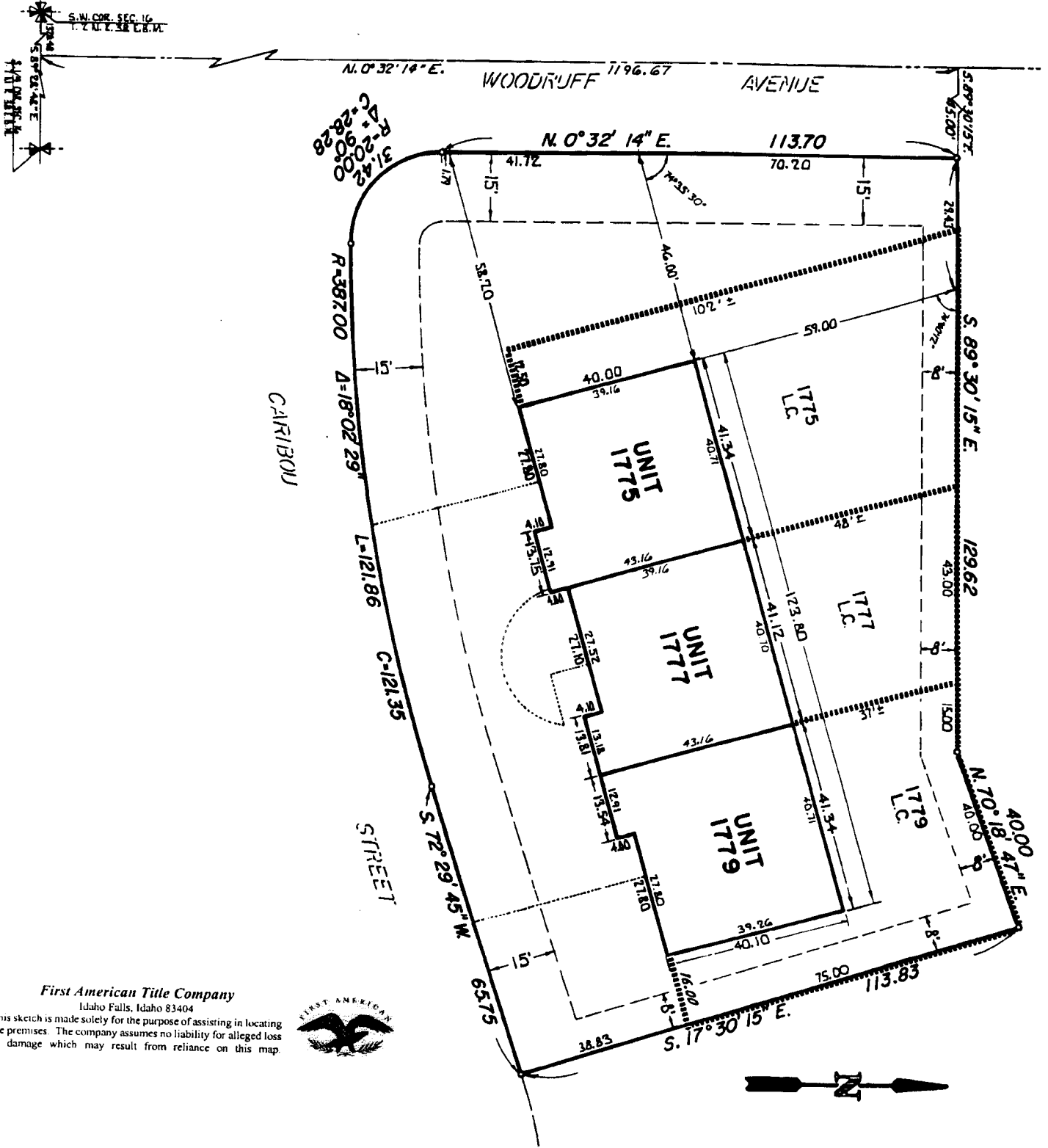


# CARIBOU TRI CONDO

## A CONDOMINIUM PROJECT

This is a Replat of and Supersedes the previously Recorded Plat of Baywood Village Phase One.  
 CITY OF IDAHO FALLS, BONNEVILLE COUNTY, IDAHO  
 ELLSWORTH ENGINEERING, INC.  
 IDAHO FALLS, IDAHO



First American Title Company  
 Idaho Falls, Idaho 83404

This sketch is made solely for the purpose of assisting in locating the premises. The company assumes no liability for alleged loss or damage which may result from reliance on this map.

