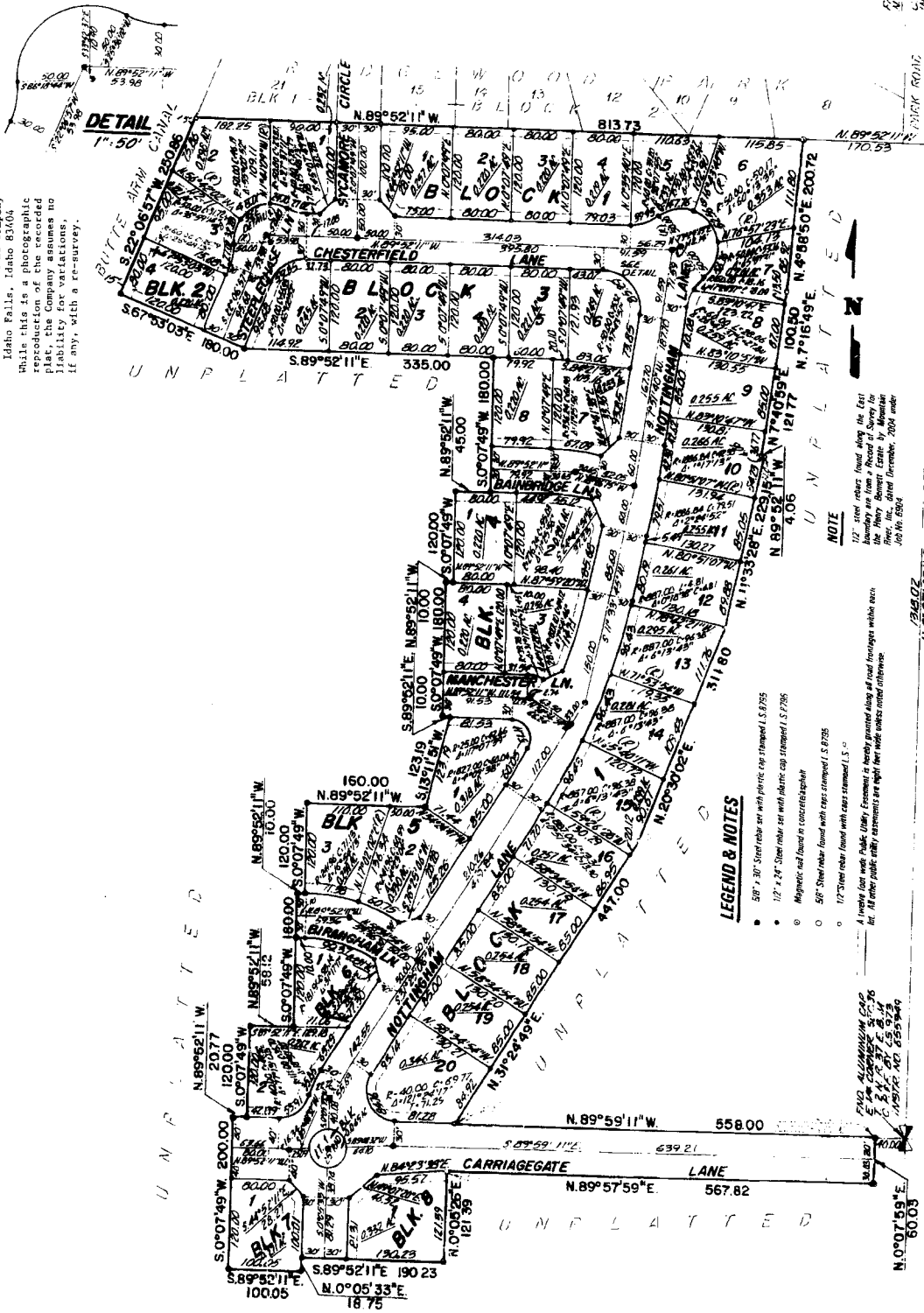


"CARRIAGEGATE"
DIVISION NO. 1
AN ADDITION TO THE CITY OF IDAHO FALLS, BONNEVILLE COUNTY, IDAHO
LYING IN THE E. 1/2 E. 1/2 SECTION 36 T. 2 N. R. 37 E. B. M.

First American Title Company
 Idaho Falls, Idaho 83404
 While this is a photographic
 reproduction of a recorded
 plat, the Company assumes no
 liability for variations,
 if any, with a re-survey.



LEGEND & NOTES

- 3/8" x 30" Steel rebar set with plastic cap stamped L.S. 8795
 - 1/2" x 24" Steel rebar set with plastic cap stamped L.S. 7295
 - Polymeric seal found in concrete/slab
 - 5/8" Steel rebar found with caps stamped L.S. 8795
 - 1/2" Steel rebar found with caps stamped L.S. 7295
- A 1/2" steel rebar found along the East boundary are from a Record of Survey for Block 1, City of Idaho Falls, Idaho, File No. 2004-0001, Job No. 2004-0001.

NOTE

1/2" steel rebar found along the East boundary are from a Record of Survey for Block 1, City of Idaho Falls, Idaho, File No. 2004-0001, Job No. 2004-0001.

1/2" steel rebar found along the East boundary are from a Record of Survey for Block 1, City of Idaho Falls, Idaho, File No. 2004-0001, Job No. 2004-0001.

SECTION 36, T. 2 N., R. 37 E., B. M. 2004-0001

1/2" steel rebar found along the East boundary are from a Record of Survey for Block 1, City of Idaho Falls, Idaho, File No. 2004-0001, Job No. 2004-0001.