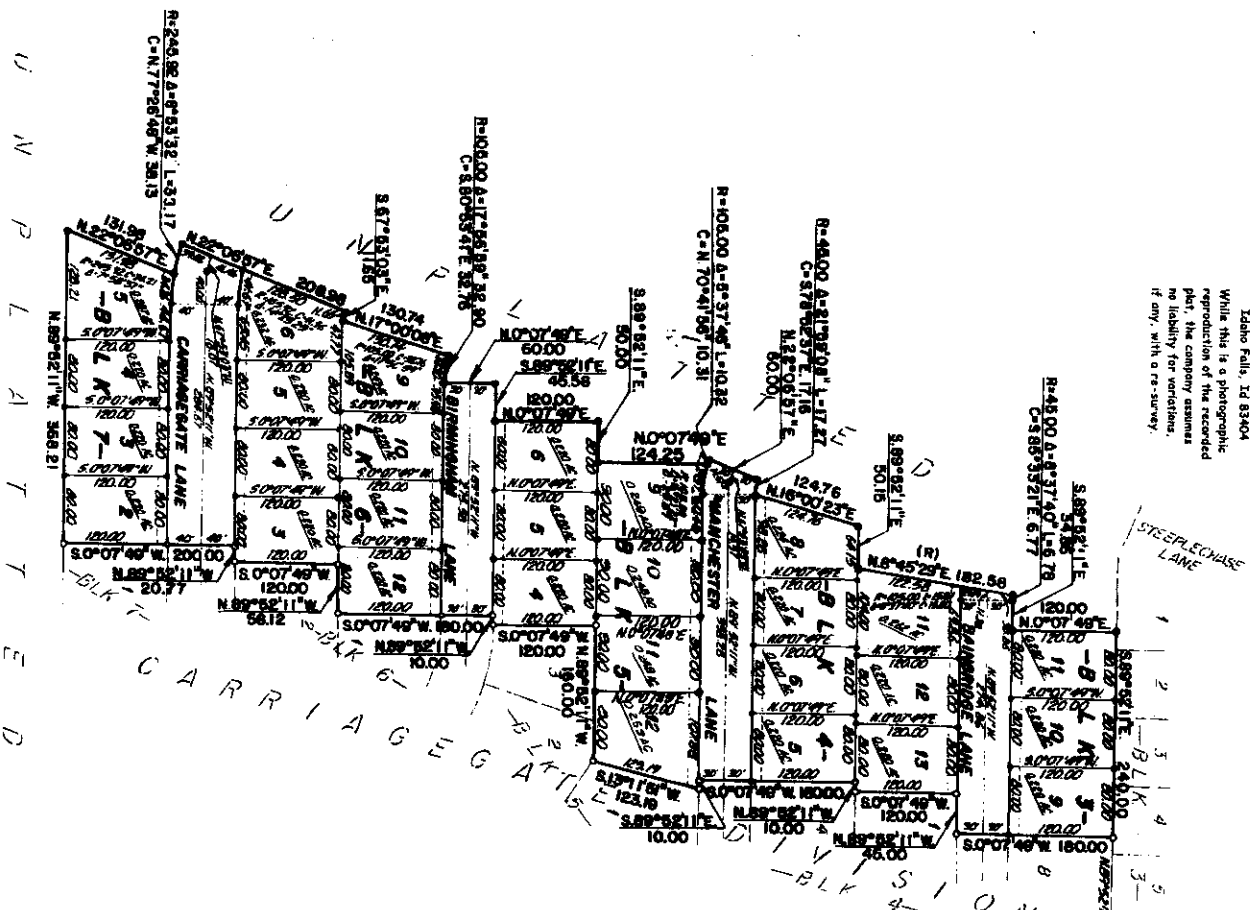


"CARRIAGEGATE" DIVISION NO. 2

AN ADDITION TO THE CITY OF IDAHO FALLS, BONNEVILLE COUNTY, IDAHO
LYING IN THE EAST 1/2 OF SECTION 36 T.4N. R.37E. B.M.

First American Title Company
Idaho Falls, Id 83404
While this is a photographic reproduction of the recorded plat, the company assumes no liability for variations, if any, with a re-survey.



END ALUMINUM CAP
E.T.M. CORNER SEC. 36
T.4N. R.37E. B.M.
C.P. & P. 163-317
WATER NO. 455-544

1045.02
3.070749W 2643.87
SECTION LINE - BASIS OF BEARING'S
CITY DATUM (PRE 2004)

LEGEND & NOTES

- 5/8" x 3/32" Steel plate set with plastic cap stamped 1.8.8783
 - 1/2" x 3/8" Steel plate set with plastic cap stamped 1.8.709
 - Magnetic nail found in concrete slab
 - 3/8" Steel plate found with cap stamped 1.8.8783
 - 1/2" Steel plate found with cap stamped 1.8.8783
- * Property lines and other utility lines shown in this plat are based on a survey of 1984. The survey was conducted by the Idaho State Surveyor's Office. The survey was conducted in accordance with the laws of Idaho and the rules of the Idaho State Surveyor's Office.

END ALUMINUM CAP
E.T.M. CORNER SEC. 36
T.4N. R.37E. B.M.
C.P. & P. 163-317
WATER NO. 455-544