

LEGEND & NOTES

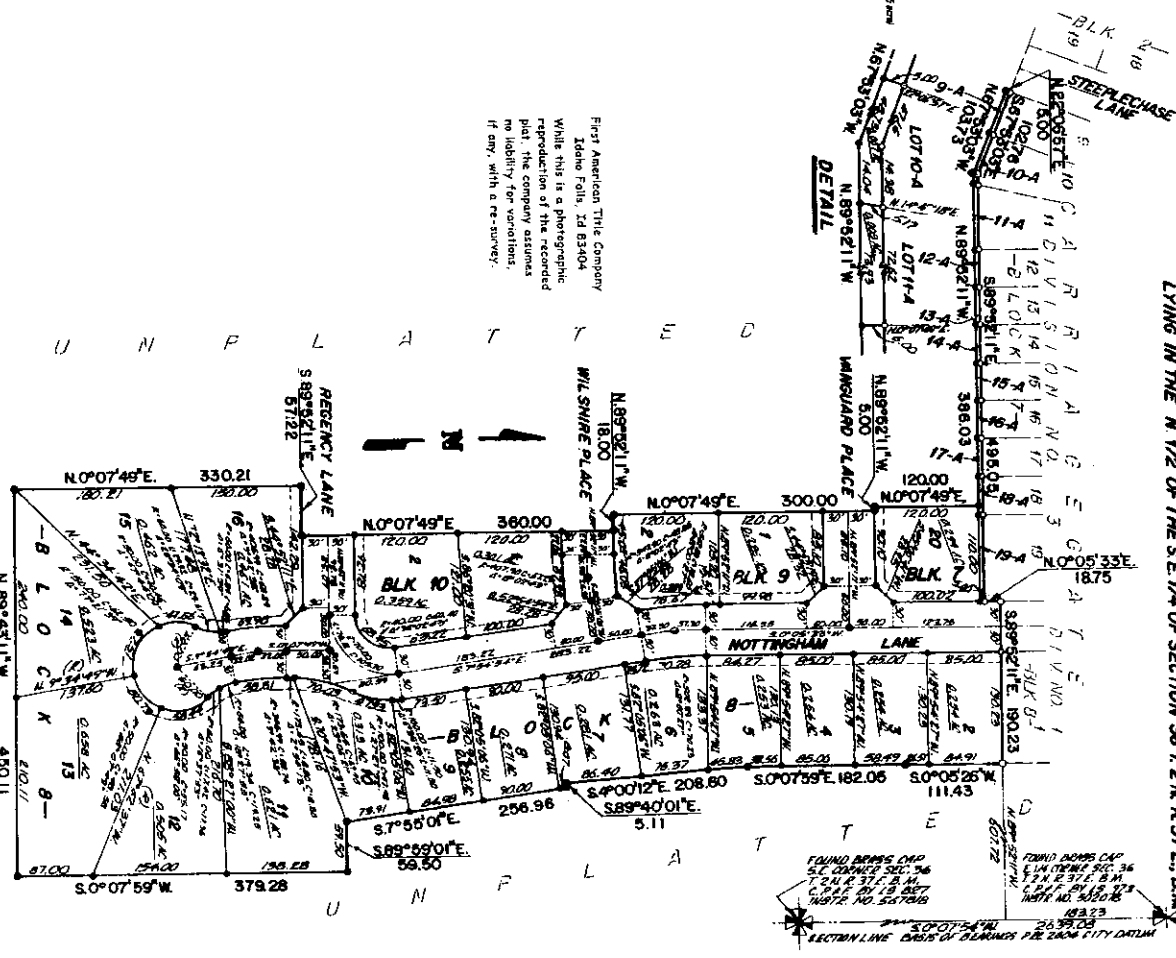
- 5/8" x 5/8" Steel nail set with plate cap stamped L.S. 8785
 - 1/2" x 2" Steel nail set with plate cap stamped L.S. 8785
 - 5/8" Steel nail set with plate cap stamped L.S. 8785
 - 1/2" Steel nail set with plate cap stamped L.S. 8785
- A length of 100' with 10' 10" interval is used for all measurements unless otherwise specified. All other public utility easements are shown with their respective symbols. The location of all utility lines is shown as they exist on the ground. The location of all utility lines is shown as they exist on the ground. The location of all utility lines is shown as they exist on the ground.

NOTE (LOT DIMENSIONS)

Lot 8A N. 0° 07' 49" E. 330.21' W. 123° 02' 37" S. 5.00' Lot 8B N. 0° 07' 49" E. 330.21' W. 123° 02' 37" S. 5.00' Lot 8C N. 0° 07' 49" E. 330.21' W. 123° 02' 37" S. 5.00' Lot 8D N. 0° 07' 49" E. 330.21' W. 123° 02' 37" S. 5.00' Lot 8E N. 0° 07' 49" E. 330.21' W. 123° 02' 37" S. 5.00' Lot 8F N. 0° 07' 49" E. 330.21' W. 123° 02' 37" S. 5.00' Lot 8G N. 0° 07' 49" E. 330.21' W. 123° 02' 37" S. 5.00' Lot 8H N. 0° 07' 49" E. 330.21' W. 123° 02' 37" S. 5.00' Lot 8I N. 0° 07' 49" E. 330.21' W. 123° 02' 37" S. 5.00' Lot 8J N. 0° 07' 49" E. 330.21' W. 123° 02' 37" S. 5.00'

**"CARRIAGEGATE"
DIVISION NO. 4**

AN ADDITION TO THE CITY OF IDAHO FALLS, BONNEVILLE COUNTY, IDAHO
LYING IN THE N 1/2 OF THE S. 1/4 OF SECTION 36 T. 2 N. R. 37 E. B.M. 7



First American Title Company
Idaho Falls, ID 83404

While this is a photographic reproduction of the recorded plat, the company assumes no liability for variations, if any, with a re-survey.

U N P L A T T E D

U N P L A T T E D