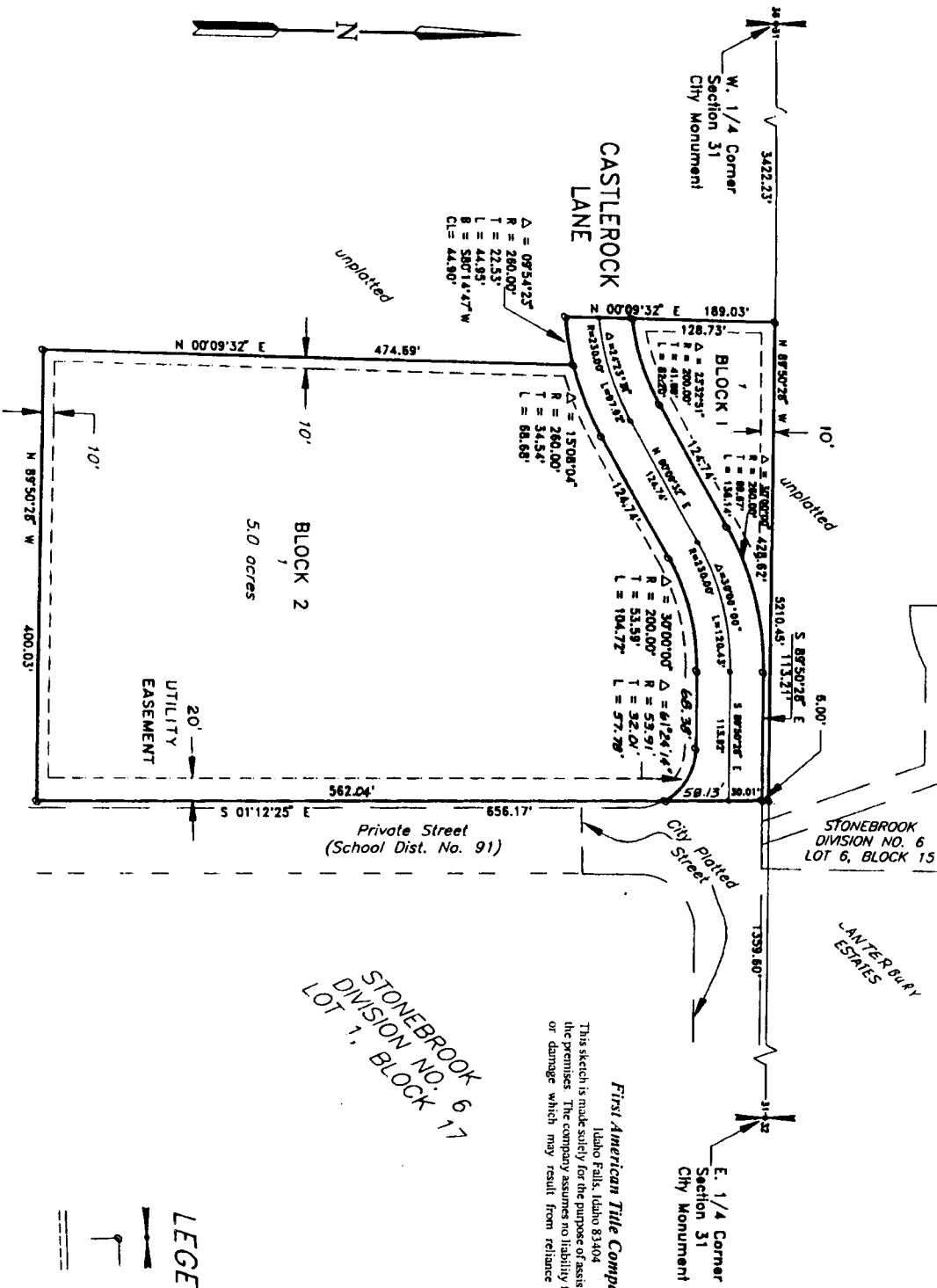


CASTLEROCK ADDITION DIVISION NO. 1

AN ADDITION TO THE CITY OF IDAHO FALLS, BONNEVILLE COUNTY, IDAHO
PART OF THE NW 1/4, SE 1/4 SECTION 31, T.2 N., R. 38 E., B.M.



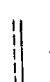




First American Title Company
Idaho Falls, Idaho 83404
This sketch is made solely for the purpose of assisting in locating the premises. The company assumes no liability for alleged loss or damage which may result from reliance on this map.



STONEBROOK
DIVISION NO. 6
LOT 1, BLOCK 17

LEGEND

-  Section control corners
-  Placed 1/2" iron rod with cap marked P.L.S. 4563
-  Utility easements are 10' wide along the frontage of all lots
-  Side yard and rear yard easements are 8' unless otherwise shown.
-  Monument to be placed after construction