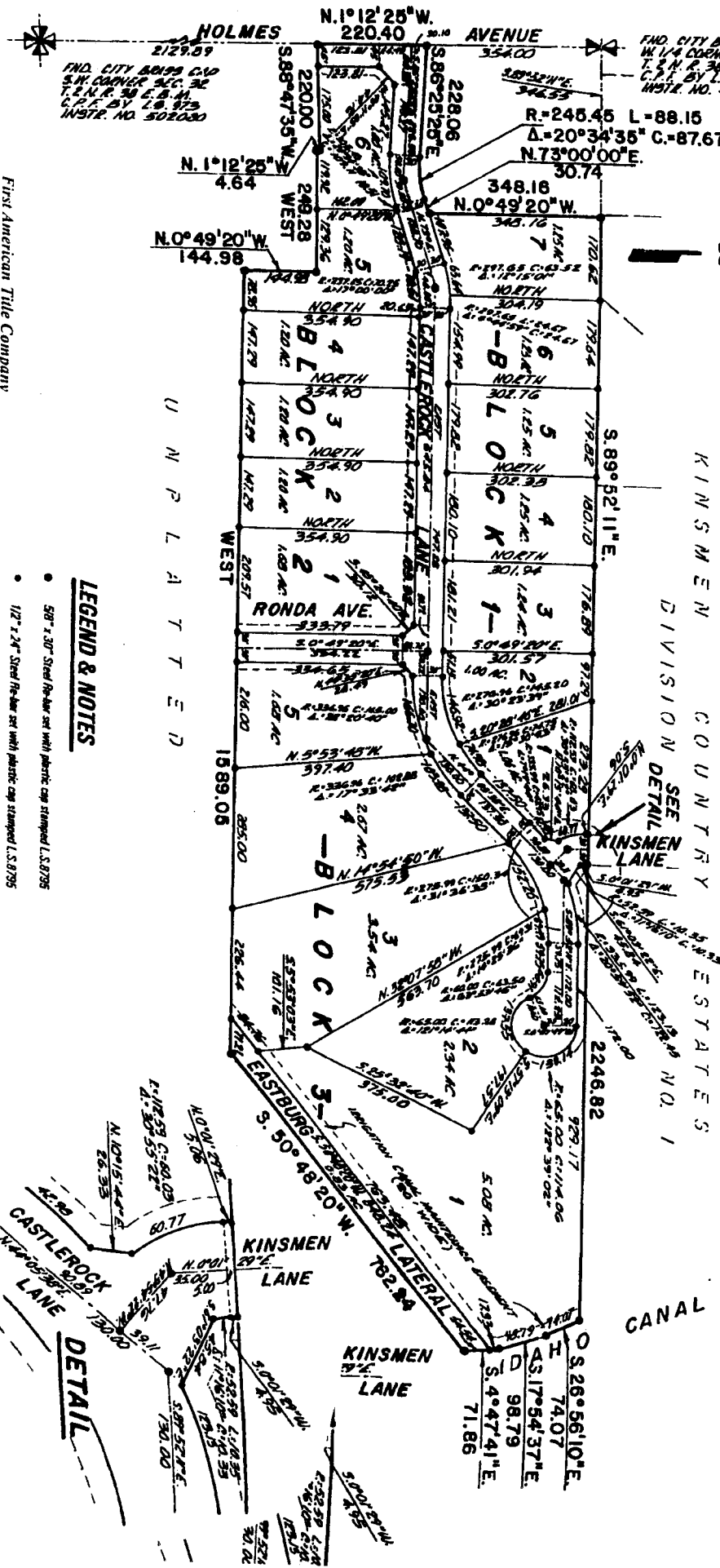


CASTLEROCK ADDITION DIVISION NO. 2

TO THE CITY OF IDAHO FALLS, BONNEVILLE COUNTY, IDAHO
BEING PART OF THE N.1/2 S.W. 1/4 SECTION 32, T. 2 N. R. 38 E., B.M.

SECTION LINE S.1/2°25'E. 2704.24 CITY DATUM



FIND CITY BRASS CAP
W. 1/4 CORNER SEC. 32
T. 2 N. R. 38 E. B.M.
C.P.M. BY I.S. 511
INSTR. NO. 499928

This sketch is made solely for the purpose of assisting in locating the premises. The company assumes no liability for alleged loss or damage which may result from reliance on this map.



First American Title Company
Idaho Falls, Idaho 83404

LEGEND & NOTES

- 5/8" x 3/8" Steel Rebar set with plastic cap stamped L.S.8795
 - 1/2" x 2 1/4" Steel Rebar set with plastic cap stamped L.S.8795
 - 1/2" Steel Rebar found with caps stamped as shown
- A Right of Way Utility Easement is hereby granted along all road frontages within each lot. All other easements are in full force unless otherwise noted.
- DIRECT ACCESS OVER ANGLAIS AVENUE FROM LOT 6 BLOCK 2 IS NOT PERMITTED**