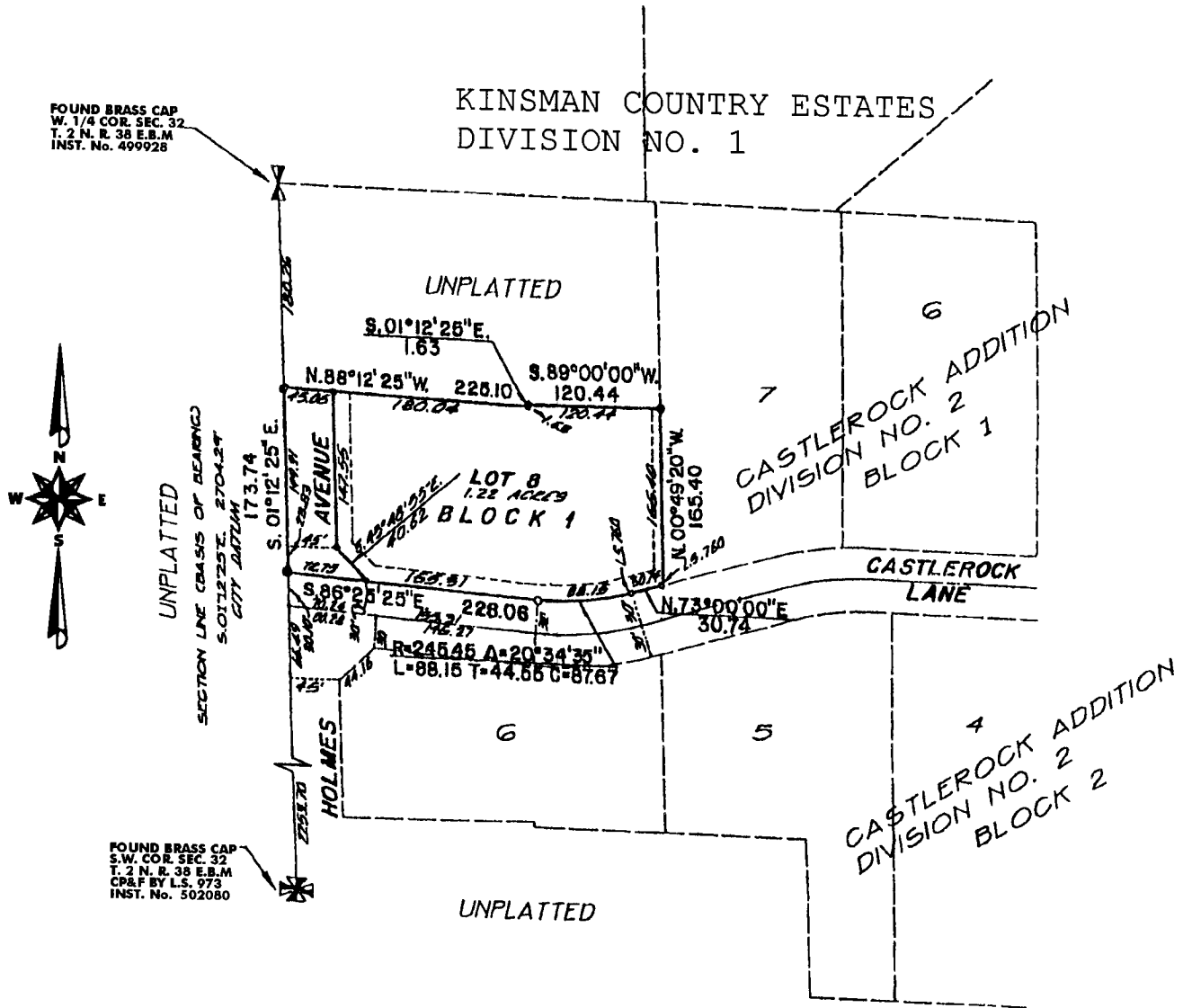


# CASTLEROCK ADDITION DIVISION No. 3

TO THE CITY OF IDAHO FALLS, BONNEVILLE COUNTY, IDAHO  
BEING PART OF THE S.W. 1/4 SECTION 32, T. 2N., R. 38E. B.M.



### LEGEND & NOTES

- 5/8"x30" Steel Re-bar set with plastic cap stamped L.S. 8796
- 1/2" x 30" Steel Re-bar set with plastic cap stamped L.S. 8796
- Steel survey nail with washer stamped L.S. 8796
- 5/8" Steel Re-bar found with caps stamped L.S. 8796
- 1/2" Steel Re-bar found with caps stamped L.S. 8796

A fifteen foot wide Utility Easement is hereby granted along the road frontage within the lot. All other easements are eight foot wide unless otherwise noted.

**First American Title Company**  
Idaho Falls, Idaho 83404

This sketch is made solely for the purpose of assisting in locating the premises. The company assumes no liability for alleged loss or damage which may result from reliance on this map

