

CEDAR RIDGE

DIVISION NO. 11

AN ADDITION TO THE CITY OF IDAHO FALLS, BONNEVILLE COUNTY, IDAHO

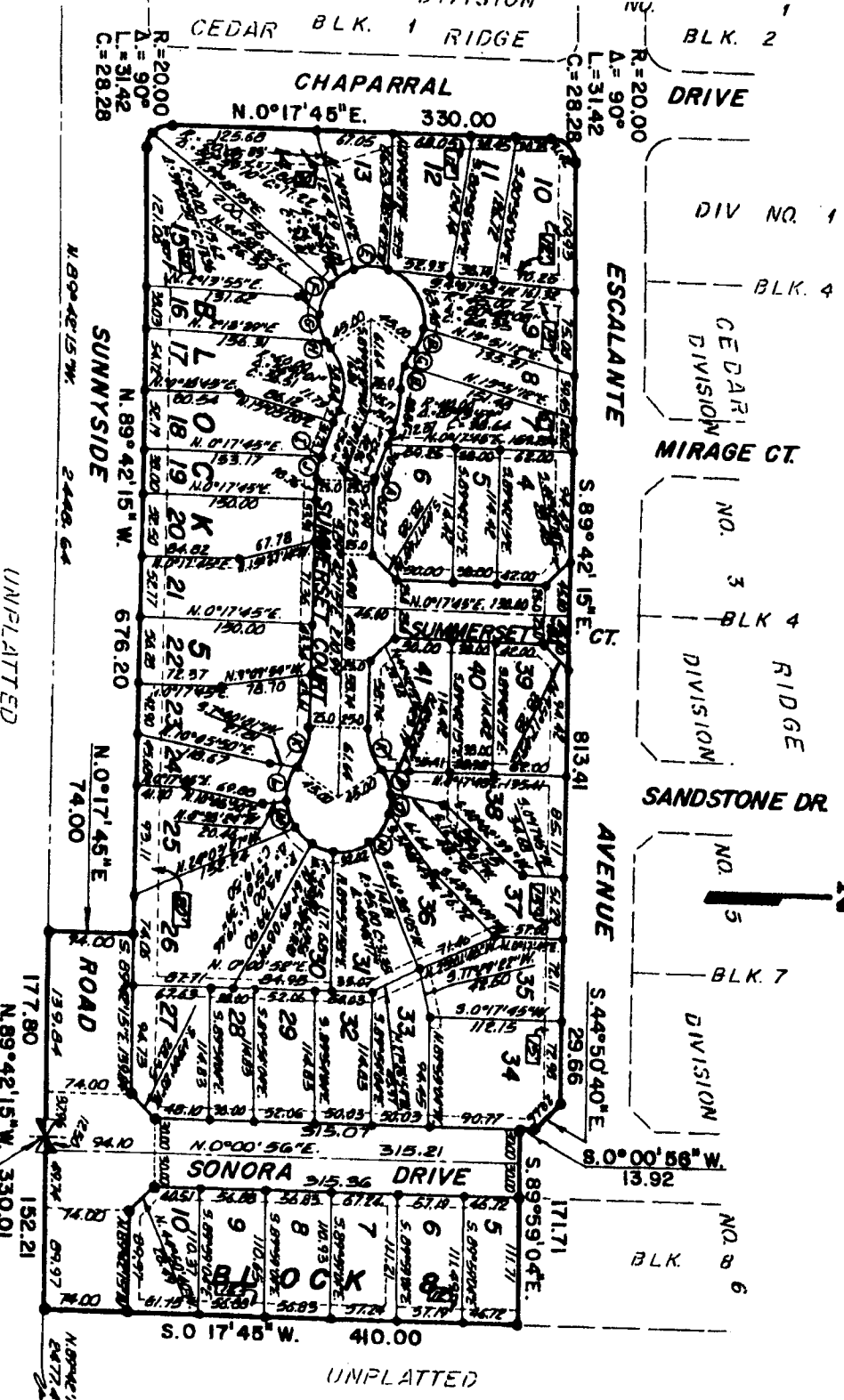
BEING A PORTION OF THE S. 1/2 OF SECTION 29, T.2 N. R.38E.B.M. AND A REPLAT OF
 LOT 1 BLOCK 5 CEDAR RIDGE DIVISION NO. 1, LOT 2 BLOCK 5 CEDAR RIDGE DIVISION NO. 5 AND
 LOT 3 BLOCK 5 CEDAR RIDGE DIVISION NO. 8, CITY OF IDAHO FALLS, IDAHO

NOTES

- DENOTES IRON RODS
- UTILITY 10 FT. WIDE ALONG STREET FRONTAGES
- UNLESS OTHERWISE NOTED, ALL OTHERS ARE 5' WIDE UNLESS OTHERWISE NOTED.
- ☐ DENOTES EASEMENT WIDTH



First American Title Company
 Idaho Falls, Idaho 83404
 This sketch is made solely for the purpose of assisting in locating the premises. The company assumes no liability for alleged loss or damage which may result from reliance on this map.



CURVE	RADIUS	DELTA	LENGTH	CHORD	CURVE	RADIUS	DELTA	LENGTH	CHORD
A	10.00	10°20'00"	3.20	3.20	I	60.00	0°40'00"	0.70	0.70
B	60.00	10°20'00"	10.70	10.67	J	60.00	10°42'02"	10.66	10.60
C	60.00	17°04'00"	17.80	17.82	K	60.00	35°57'02"	37.00	37.00
D	45.00	20°20'40"	20.02	20.04	L	45.00	42°10'07"	32.22	32.47
E	45.00	37°32'07"	29.74	29.20	M	45.00	20°51'07"	22.40	23.10
F	45.00	41°40'10"	32.70	32.01	N	45.00	41°05'04"	32.27	31.60
G	45.00	27°10'20"	21.34	21.14	O	45.00	20°18'10"	20.00	20.41
H	45.00	0°20'20"	0.44	0.43	P	45.00	21°40'47"	17.07	16.00

UNPLATTED

UNPLATTED

S.E. CORNER SEC. 29
 T.2 N. R.38E.B.M.