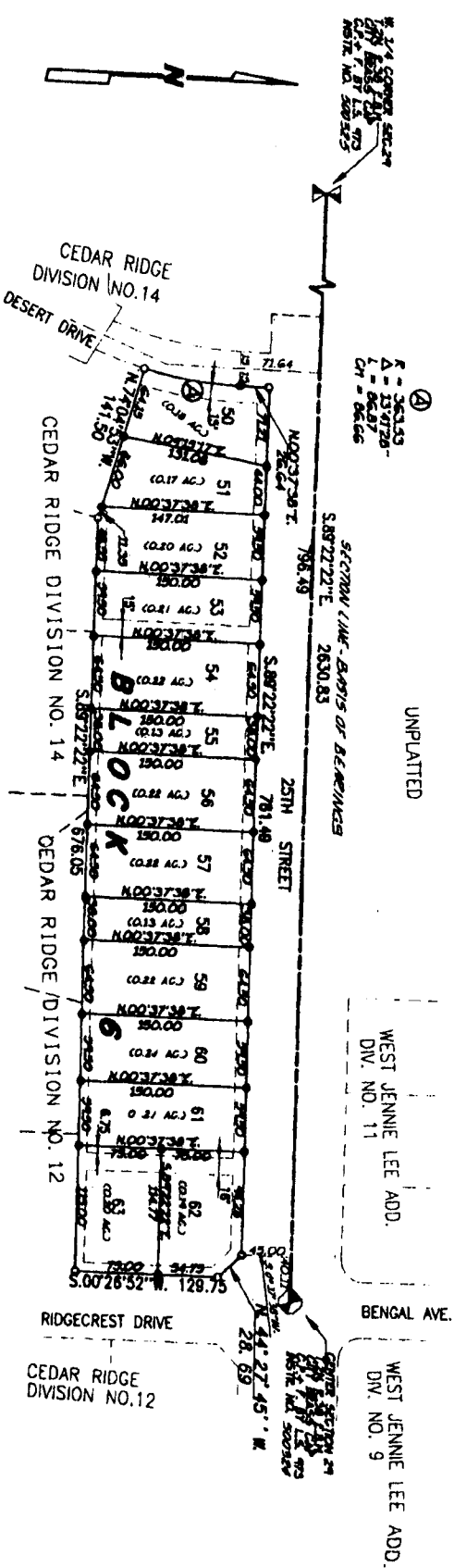


CEDAR RIDGE
DIVISION NO. 15
 TO THE CITY OF IDAHO FALLS, BONNEVILLE COUNTY, IDAHO
 BEING A REPLAT OF LOT 17; BLOCK 6, CEDAR RIDGE, DIVISION NO. 12
 AND LOTS 43 THRU 49, BLOCK 6, CEDAR RIDGE, DIVISION NO. 14
 IN THE N. E. 1/4 OF THE S. W. 1/4 OF SECTION 29 T. 2N. R. 38 E. B. M.



First American Title Company
 Idaho Falls, Idaho 83404

This sketch is made solely for the purpose of assisting in locating the premises. The company assumes no liability for alleged loss or damage which may result from reliance on this map.



- LEGEND & NOTES**
- 5/8" x 3/8" Shaded line set with distance cap stamped L.S. 27
 - 1/2" x 24" Shaded line set with distance cap stamped L.S. 27
 - Shaded line set with cap stamped L.S. 27
- A True and valid Utility Easement is hereby granted along all road frontages within each lot.
 All other easements are Ejecta free with respect to this plat.