

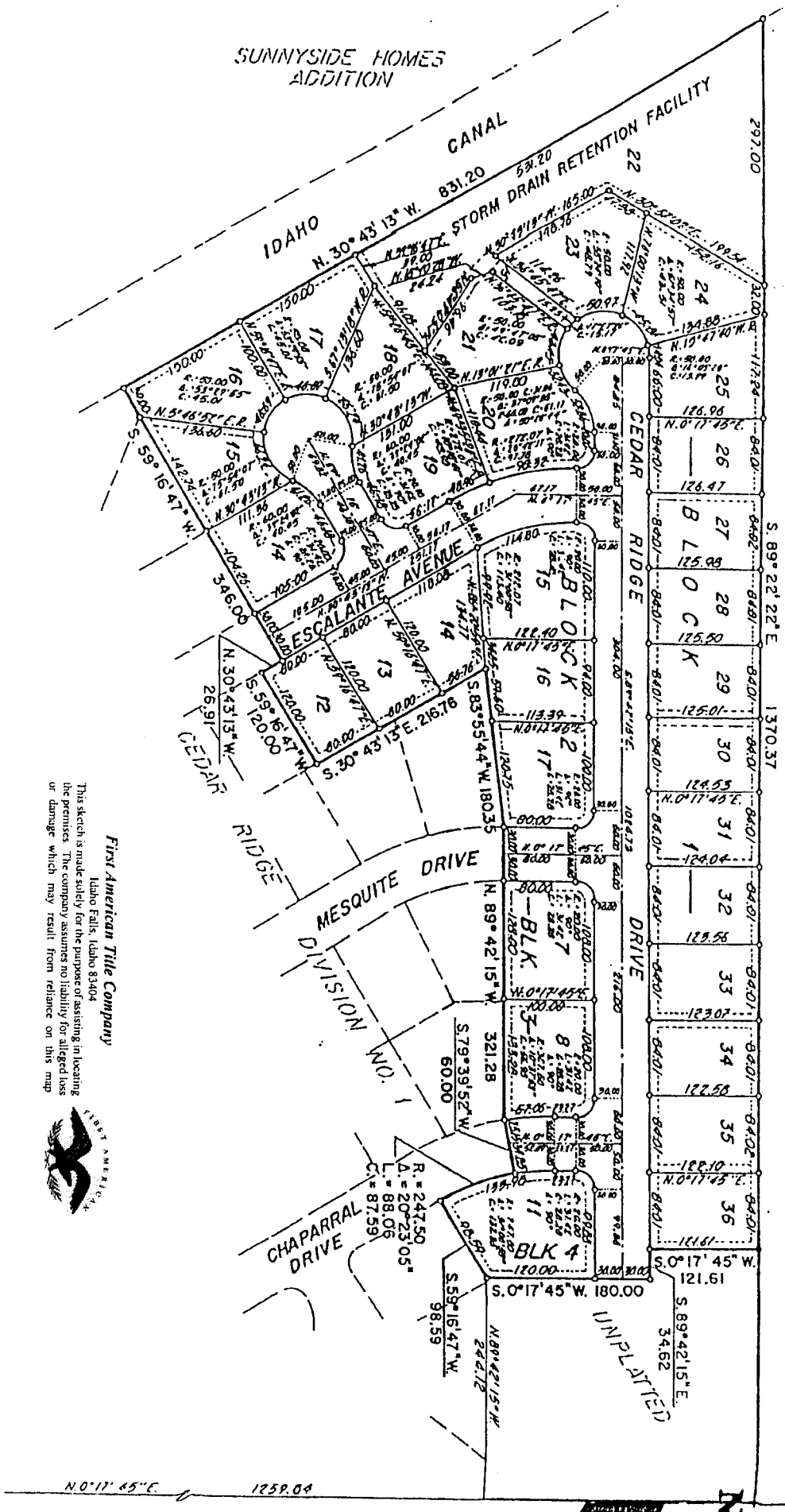
GREYDAIR BRIDGE

DIVISION NO. 2

AN ADDITION TO THE CITY OF IDAHO FALLS, BONNEVILLE COUNTY, IDAHO
BEING A PORTION OF THE S.W. 1/4 OF SECTION 29 T. 2 N. R. 38 E. B. M.

UNPLATTED

UNPLATTED



This sketch is made solely for the purpose of assisting in locating the premises. The company assumes no liability for alleged loss or damage which may result from reliance on this map.



First American Title Company

Idaho Falls, Idaho 83404

N. 0° 17' 45" E. 1259.04