

CENTENNIAL ADDITION DIVISION NO. 1

AN ADDITION TO THE CITY OF IDAHO FALLS, BONNEVILLE COUNTY, IDAHO
 PORTION OF THE E. 1/2 OF SECTION 12, TOWNSHIP 2 NORTH, RANGE 37 E. B. M

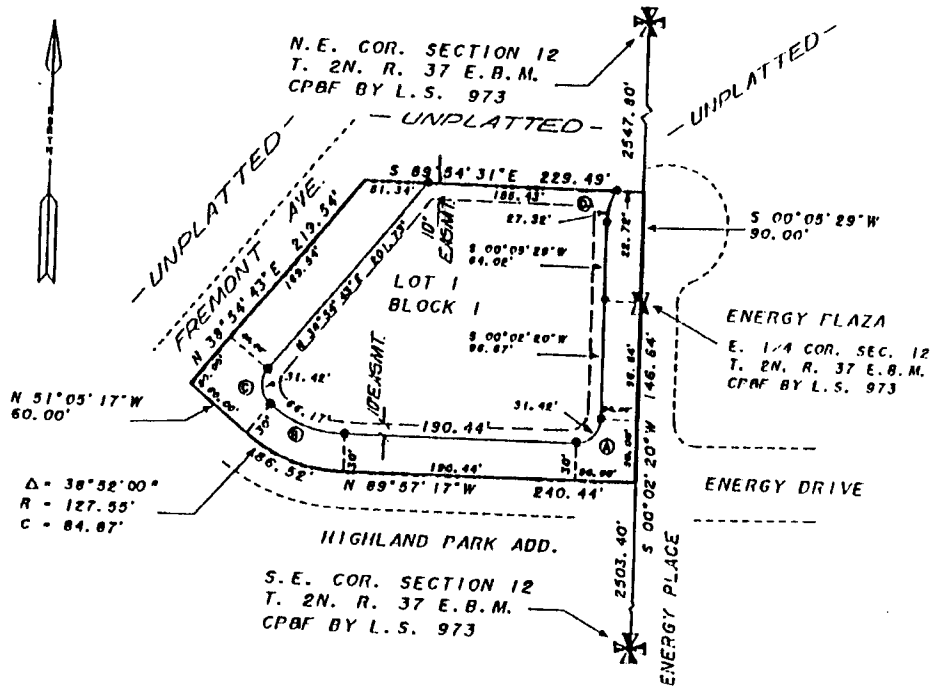
First American Title Company

Idaho Falls, Idaho 83404

This sketch is made solely for the purpose of assisting in locating the premises. The company assumes no liability for alleged loss or damage which may result from reliance on this map.



CURVE TABLE							
CURVE	RADIUS	TANGENT	LENGTH	DELTA	DEGREE	CHORD	CH. BEARING
A	20.00'	20.00'	31.42'	90°00'23"	286°28'44"	28.29'	S 45°02'32"W
B	97.55'	34.42'	68.17'	38°52'00"	58°44'05"	64.91'	N 70°31'17"W
C	20.00'	20.00'	31.42'	90°00'00"	286°28'44"	28.28'	N 06°05'17"W
D	50.00'	14.01'	27.32'	31°18'07"	114°38'29"	26.98'	S 13°44'52"W



- DENOTES IRON RODS
- DENOTES UTILITY EASEMENTS
- NOTE: EASEMENTS ALONG STREET FRONTAGE ARE 10 FT. WIDE ALL OTHERS ARE 8 FT. UNLESS SHOWN OTHERWISE