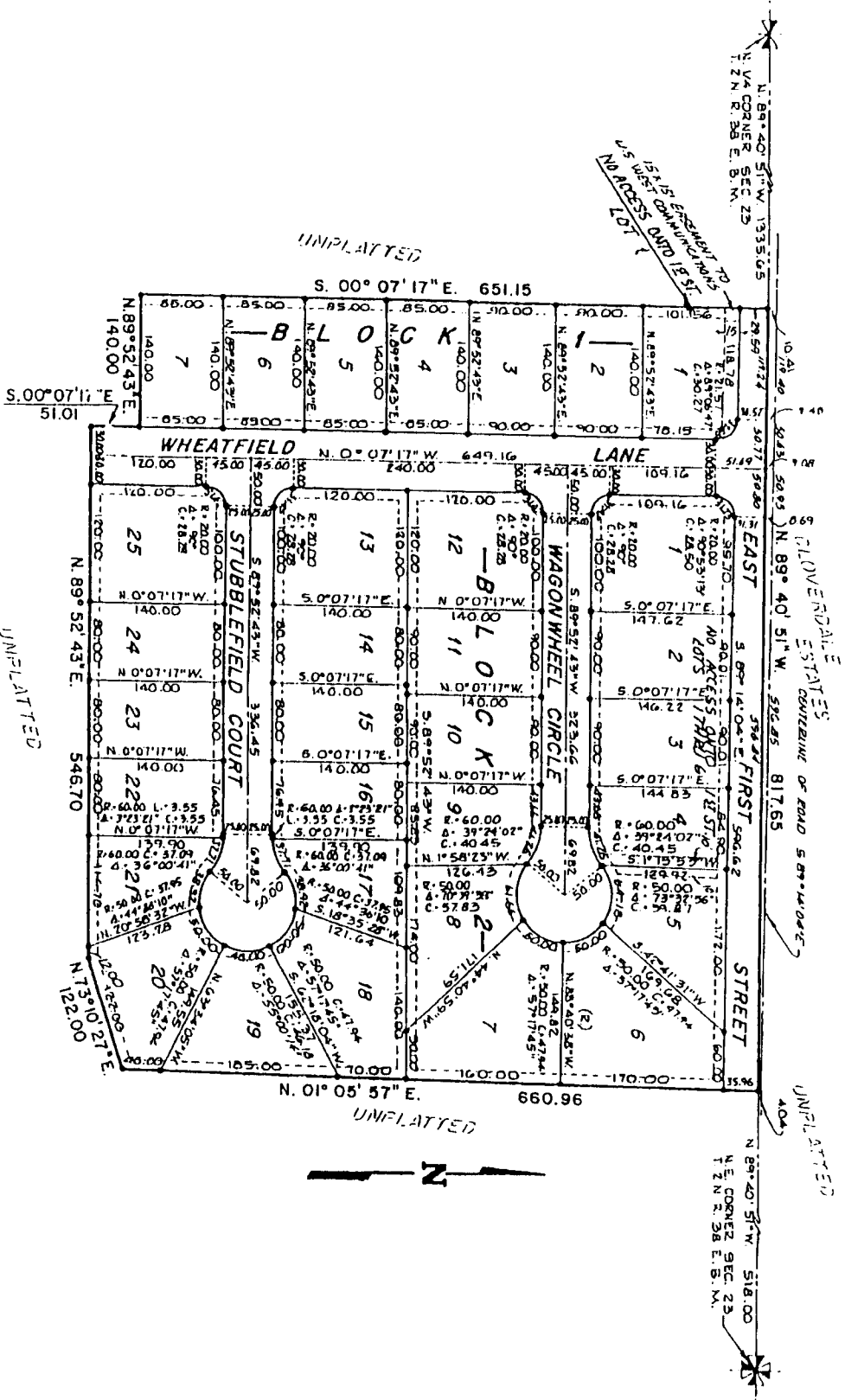


CENTENNIAL RANCH

DIVISION NO. 1

PART OF THE E. 1/2 N.E. 1/4 SECTION 23 T. 2 N. R. 38 E. B. M.
BONNEVILLE COUNTY, IDAHO



First American Title Company
 Idaho Falls, Idaho 83404

This sketch is made solely for the purpose of assisting in locating the premises. The company assumes no liability for alleged loss or damage which may result from reliance on this map.



- NOTES**
- DENOTES IRON RODS
 - UTILITY EASEMENTS ARE 10 FEET WIDE UNLESS OTHERWISE NOTED
 - DOMESTIC WATER TO THIS SUBDIVISION WILL BE SUPPLIED BY FALLS WATER CO.